



**POWER  
UP™  
SALES EVENT**

**THE MORE YOU BUY  
THE MORE YOU SAVE**

**POWER UP YOUR WORKSHOP WITH**

**1x 2x 3x  
REBATES  
SAVE UP TO \$900**

WITH MULTIPLE REBATES

**POWER SAVINGS**  
**SAVE UP TO  
\$1169!**  
OFF MANUFACTURER'S  
LIST PRICE



**POWER UP SALES EVENT**



**INCREASE YOUR REBATE POWER**  
**MULTIPLY YOUR REBATE TOTAL BY THE QUANTITY OF TOOLS PURCHASED**

**1x**  
**UP TO \$100 BACK**

**2x**  
**UP TO \$400 BACK**

**3x**  
**UP TO \$900 BACK**

**BUY MORE.  
 SAVE MORE.**

*Example 1 - Buy a PM2000 and get a \$50 rebate. Example 2 - Buy a PM2000 (\$50 Rebate) and a 54A Jointer (\$50 Rebate) sum the total rebate and double it for a savings of \$200. Example 3 - Buy a PM2000 (\$50 Rebate), 54A jointer (\$50 Rebate) and PM1300DC (\$25 Rebate) sum the total rebate and triple it for a savings of \$375. Maximum 3 purchases eligible for rebate escalator.*

**PM2000 10" CABINET SAW**

- Rising knife quick release
- Built-in retractable caster system (patent pending)
- Superb dust collection
- Arbor lock for quick blade change

LIST PRICE \$3252<sup>00</sup>  
**\$2699<sup>99</sup>**  
 STOCK NO. 1792000K



**POWER SAVINGS**  
**YOU SAVE \$552<sup>01</sup>**

STOCK NO.	DESCRIPTION	LIST PRICE	SALE PRICE	POWER SAVINGS
1792000K	PM2000 10" Tablesaw, 3HR, 1Ph, 230V, 50" Accu-Fence, Table & Legs	\$3,252.00	<b>\$2,699.99</b>	\$552.01
1792001K	PM2000 10" Tablesaw, 3HR, 1Ph, 230V, 50" Accu-Fence, Rout-R-Lift, Table & Legs	\$3,559.00	<b>\$2,999.99</b>	\$559.01
1792002K	PM2000 10" Tablesaw, 3HR, 1Ph, 230V, 30" Accu-Fence	\$3,126.00	<b>\$2,599.99</b>	\$526.01
1792003K	PM2000 10" Tablesaw, 3HR, 1Ph, 230V, 30" Accu-Fence, Rout-R-Lift, Table & Legs	\$3,428.00	<b>\$2,899.99</b>	\$528.01
1792005K	PM2000 10" Tablesaw, 5HR, 3Ph, 230/460V, 50" Accu-Fence, Table & Legs	\$3,252.00	<b>\$2,699.99</b>	\$552.01
1792006K	PM2000 10" Tablesaw, 5HR, 3Ph, 230/460V, 50" Accu-Fence, Rout-R-Lift Table & Legs	\$3,559.00	<b>\$2,999.99</b>	\$559.01
1792007K	PM2000 10" Tablesaw, 5HR, 3Ph, 230/460V, 30" Accu-Fence Table	\$3,126.00	<b>\$2,599.99</b>	\$526.01
1792008K	PM2000 10" Tablesaw, 5HR, 3Ph, 230/460V, 30" Accu-Fence, Rout-R-Lift, Table & Legs	\$3,428.00	<b>\$2,899.99</b>	\$528.01
1792010K	PM2000 10" Tablesaw, 5HR, 1Ph, 230V, 50" Accu-Fence, Table & Legs	\$3,745.00	<b>\$3,099.99</b>	\$645.01
1792011K	PM2000 10" Tablesaw, 5HR, 1Ph, 230V, 50" Accu-Fence, Rout-R-Lift, Table & Legs	\$4,200.00	<b>\$3,599.99</b>	\$600.01
1792012K	PM2000 10" Tablesaw, 5HR, 1Ph, 230V, 30" Accu-Fence, Table	\$3,745.00	<b>\$3,099.99</b>	\$645.01
1792013K	PM2000 10" Tablesaw, 5HR, 1Ph, 230V, 30" Accu-Fence, Rout-R-Lift, Table & Legs	\$4,037.00	<b>\$3,499.99</b>	\$537.01
1792016K	PM2000 10" Tablesaw, 3HR, 1Ph, 230V, 50" Accu-Fence, Workbench	\$3,624.00	<b>\$2,999.99</b>	\$624.01
1792017K	PM2000 10" Tablesaw, 5HR, 1Ph, 230V, 50" Accu-Fence, Workbench	\$4,188.00	<b>\$3,499.99</b>	\$688.01
1792018K	PM2000 10" Tablesaw, 5HR, 3Ph, 230/460V, 50" Accu-Fence, Workbench	\$3,624.00	<b>\$2,999.99</b>	\$624.01



### 64A 10" TABLESAW

- Precision ground cast iron table has a beveled edge to help eliminate damage to work material
- Exclusive 3VX belt drive is more efficient with less vibration
- Accu-Fence® with 30" to the right cutting capacity ensures accuracy
- T-slot miter gauge with stops permits wider cross cutting
- Quick-connect power cord reduces assembly time
- Manual push-button power switch is lockable, has removable safety key to prevent accidental starts



LIST PRICE \$1298<sup>00</sup>

**\$999<sup>99</sup>**

STOCK NO. 1791227K



STOCK NO.	DESCRIPTION	LIST PRICE	SALE PRICE	POWER SAVINGS
1791227K	64A Tablesaw, 1-1/2 HP, 1 Ph, 115/230V, 30" Accu-Fence System	\$1,298.00	<b>\$999.99</b>	\$298.01
1791228K	64A Tablesaw, 1-1/2 HP, 1 Ph, 115/230V, 50" Accu-Fence System	\$1,393.00	<b>\$1,099.99</b>	\$293.01

### PM3000 14" TABLESAW

- Quick release riving knife greatly reduces binding/kickback risk
- Push button arbor lock (patent pending) for rapid blade change
- Poly-V drive belt system delivers efficient, quiet operation



LIST PRICE \$5869<sup>00</sup>

**\$4699<sup>99</sup>**

STOCK NO. 1720304K



STOCK NO.	DESCRIPTION	LIST PRICE	SALE PRICE	POWER SAVINGS
1720304K	PM3000, 14" Tablesaw, 5HP, 1PH, 230V, 50" Accu-Fence System	\$5,869.00	<b>\$4,699.99</b>	\$1,169.01
1720305K	PM3000, 14" Tablesaw, 7.5HP, 3PH, 230/460V, 50" Accu-Fence System	\$5,869.00	<b>\$4,699.99</b>	\$1,169.01

### PM2700 SHAPERS

- Heavy cast iron base
- Integrated caster system built into the shaper base
- Spindle height digital readout



LIST PRICE \$3604<sup>00</sup>

**\$2999<sup>99</sup>**

STOCK NO. 1280100C



STOCK NO.	DESCRIPTION	LIST PRICE	SALE PRICE	POWER SAVINGS
1280100C	PM2700 Shaper, 3HP, 1Ph, 230V	\$3,604.00	<b>\$2,999.99</b>	\$604.01
1280101C	PM2700 Shaper, 5HP, 1Ph, 230V	\$3,781.00	<b>\$3,199.99</b>	\$581.01
1280102C	PM2700 Shaper, 5HP, 3Ph, 230/460V (Prewired 230V)	\$3,781.00	<b>\$3,199.99</b>	\$581.01

### MODEL 3520B WOOD LATHE

- Sliding headstock with electronic variable speed and digital RPM readout
- Two-position mount for the optional bed extension
- 2HP, 1PH or 3PH, 230V



LIST PRICE \$4214.00

**\$3399<sup>99</sup>**

STOCK NO. 1352001



STOCK NO.	DESCRIPTION	LIST PRICE	SALE PRICE	POWER SAVINGS
1352001	Model 3520B, 2HP, Will Operate 1Ph or 3Ph, 230V	\$4,214.00	<b>\$3,399.99</b>	\$814.01



# POWER UP SALES EVENT

## 15S AND 15HH PLANERS

- Powerful 3HP TEFC motor controlled with a magnetic switch for safety
- Three V-belts transfer maximum power to the cutterhead
- Digital readout ensures accurate table positioning

LIST PRICE \$2392.00

**\$1999<sup>99</sup>**

STOCK NO. 1791210

**POWER SAVINGS**  
YOU SAVE  
**\$392<sup>01</sup>**



### 15HH

The Byrd® helical cutterhead with 98 four-sided knife inserts provides smoother, quieter cutting and finer finish than conventional systems

STOCK NO.	DESCRIPTION	LIST PRICE	SALE PRICE	POWER SAVINGS
1791210	15S Planer, 3HP 1PH 230V	\$2,392.00	<b>\$1,999.99</b>	\$392.01
1791213	15HH Planer, 3HP 1PH 230V, helical head	\$3,020.00	<b>\$2,499.99</b>	\$520.01

DRO comes standard with 15S

## 209 AND 209HH PLANERS

- 5HP motor and 20" planing capacity for heavy duty work
- Fully enclosed base cabinet with integrated casters for shop mobility
- Cast iron table with extensions creates a big 55-1/2" x 20" working area
- Four feed speeds - 24 and 31 FPM, 16 and 20 FPM with gear change - provide versatility
- Feed rollers and cutterhead supported by full cast iron head assembly for rigidity

LIST PRICE \$2735.00

**\$2399<sup>99</sup>**

STOCK NO. 1791296

**POWER SAVINGS**  
YOU SAVE  
**\$335<sup>01</sup>**



### 209HH

The Byrd® helical cutterhead with 132 four-sided knife inserts provides smoother, quieter cutting and finer finish than conventional systems

STOCK NO.	DESCRIPTION	LIST PRICE	SALE PRICE	POWER SAVINGS
1791296	209 Planer, 5HP 3PH 230V	\$2,735.00	<b>\$2,399.99</b>	\$335.01
1791297	209 Planer, 5HP 3PH 230V	\$2,735.00	<b>\$2,399.99</b>	\$335.01
1791315	209HH Planer, 5HP 1PH 230V, helical head	\$4,317.00	<b>\$3,499.99</b>	\$817.01
1791316	209HH Planer, 5HP 3PH 230V, helical head	\$4,456.00	<b>\$3,499.99</b>	\$956.01



## 54A AND 54HH 6" DELUXE JOINTERS

WITH HELICAL HEAD OR QUICK AUTO-SET KNIVES

(see chart for details)

- 1HP, 1Ph, 115/230V (Prewired 115V)
- Fine adjust lever for infeed table height

LIST PRICE \$1183.00

**\$959<sup>99</sup>**

STOCK NO. 1791279DXK

**POWER SAVINGS**  
YOU SAVE  
**\$223<sup>01</sup>**



### 54HH

The helical cutterhead with 40 four-sided knife inserts provides smoother, quieter cutting and finer finish than conventional systems

STOCK NO.	DESCRIPTION	LIST PRICE	SALE PRICE	POWER SAVINGS
1791279DXK	54A, 6" Jointer, 1HP, 1Ph, 115/230V w/QS Knives	\$1,183.00	<b>\$959.99</b>	\$223.01
1791317K	54HH, 6" Jointer, 1HP, 1Ph, 115/230V w/Helical Head	\$1,722.00	<b>\$1,399.99</b>	\$322.01



**POWER UP**  
**\$50**  
**REBATE**



### PJ882 8" PARALLELOGRAM JOINTERS

- 2HP, 1Ph or 3HP, 3PH motors
- Large 8" x 82" table surface
- 1/8" depth of cut limiter control knob

LIST PRICE \$2399.00

**\$2099<sup>99</sup>**

STOCK NO. 1610079

**POWER SAVINGS**  
**YOU SAVE**  
**\$299<sup>01</sup>**

#### PJ-882HH

The helical cutterhead with 54 four-sided knife inserts provides smoother, quieter cutting and finer finish than conventional systems

STOCK NO.	DESCRIPTION	LIST PRICE	SALE PRICE	POWER SAVINGS
1610079	PJ-882 8" Parallelogram Jointer 2HP, 1Ph	\$2,399.00	<b>\$2,099.99</b>	\$299.01
1610080	PJ-882 8" Parallelogram Jointer 3HP, 3Ph	\$2,399.00	<b>\$2,099.99</b>	\$299.01
1610082	PJ-882HH, 8" Parallelogram Jointer, 2HP 1Ph 230V, with Helical Cutterhead	\$2,842.00	<b>\$2,599.99</b>	\$242.01
1610083	PJ-882HH, 8" Parallelogram Jointer, 3HP 3Ph 230/460V (Prewired 230V) with Helical Cutterhead	\$2,842.00	<b>\$2,599.99</b>	\$242.01



**ONLINE DEMO**  
@POWERMATIC.COM



**POWER UP**  
**\$50**  
**REBATE**

### 31A BELT/DISC SANDER

- Multi-position belt head locks at any angle from 0° to 90°; includes indexing pin for 0, 45°, and 90° stops
- Belt and disc tables are precision ground cast iron with miter slots
- Belt table tilts down to 45°, and can be set for beveled and mitered angle sanding
- Full cast iron platen with solid crowned aluminum drums for smooth sanding belt movement and support

LIST PRICE \$1639.00

**\$1199<sup>99</sup>**

STOCK NO. 1791291K

**POWER SAVINGS**  
**YOU SAVE**  
**\$439<sup>01</sup>**

STOCK NO.	DESCRIPTION	LIST PRICE	SALE PRICE	POWER SAVINGS
1791291K	31A Belt/Disc Sander, 1-1/2HP, 1Ph, 115V/230V	\$1,639.00	<b>\$1,199.99</b>	\$439.01
1791292K	31A Belt/Disc Sander, 2HP, 3Ph, 115V/230V	\$1,639.00	<b>\$1,199.99</b>	\$439.01

### 25" DUAL DRUM SANDER

- 5HP, 1Ph, 230V
- Independently adjustable rear drum
- Hard durometer rubber coating on steel drums
- Two-speed gearbox

LIST PRICE \$4064.00

**\$3499<sup>99</sup>**

STOCK NO. 1791290

**POWER SAVINGS**  
**YOU SAVE**  
**\$564<sup>01</sup>**



**POWER UP**  
**\$50**  
**REBATE**

STOCK NO.	DESCRIPTION	LIST PRICE	SALE PRICE	POWER SAVINGS
1791290	DDS-225, 25" Dual Drum Sander, 5HP, 1Ph, 230V	\$4,064.00	<b>\$3,499.99</b>	\$564.01



# POWER UP SALES EVENT

## PM1300 DUST COLLECTOR

- Remote controlled digital timer can be programmed for up to 99 minutes
- All-metal duct construction for rigidity and improved air flow
- Dual 4" dust ports
- Collection bags use snap ring for easy install
- Available with cloth bag filter or canister filter



### CANISTER FILTER

Pleated interior has over six times the filtering surface area of standard bags



LIST PRICE \$668.00

**\$549<sup>99</sup>**

STOCK NO. 1791077BK



STOCK NO.	DESCRIPTION	LIST PRICE	SALE PRICE	POWER SAVINGS
1791077BK	PM1300, DC, 1.75HP 1 Ph, 115/230V (Prewired 115V) w/ Bag Filter	\$668.00	\$549.99	\$118.01
1791077CK	PM1300, DC, 1.75HP 1 Ph, 115/230V (Prewired 115V) w/ Canister	\$876.00	\$739.99	\$136.01

## PM1900 DUST COLLECTOR

- Triple 4" dust ports
- All-metal duct construction for rigidity and improved air flow
- 3HP motor and large impeller for peak performance
- Available in 1 or 3 phase, with cloth bag filter or canister filter
- Single phase models have remote-controlled digital timer



STOCK NO.	DESCRIPTION	LIST PRICE	SALE PRICE	POWER SAVINGS
1791075BK	PM1900, DC, 3HP, 1Ph, 230V, w/ Bag Filter Kit	\$1,197.00	\$999.99	\$197.01
1791075CK	PM1900, DC, 3HP, 1Ph, 230V, w/ Canister Kit	\$1,609.00	\$1,399.99	\$209.01
1791076BK	PM1900, DC, 3HP, 3Ph, 230/460V (Prewired 230V) w/ Bag Filter Kit	\$1,173.00	\$999.99	\$173.01
1791076CK	PM1900, DC, 3HP, 3Ph, 230/460V (Prewired 230V) w/ Canister Kit	\$1,605.00	\$1,399.99	\$205.01

LIST PRICE \$1197.00

**\$999<sup>99</sup>**

STOCK NO. 1791075BK



## POWERFEEDERS

These rugged, heavy-duty stock feeders feature continuous-duty motors that transfer power from the gear box to the feed roller through the roller chain and sprockets, providing superior positive feeding for all types of materials. The fully adjustable support columns feature moveable universal joints and heavy locking mechanisms that lock the feeder in horizontal, vertical, or angle feed positions. Solid cast iron construction of bodies, bases and universal joints provide stability with vibration-free feeding. The smart roller system provides money-saving wheel changes by allowing the replacement of the tire only, not the complete assembly as on other units



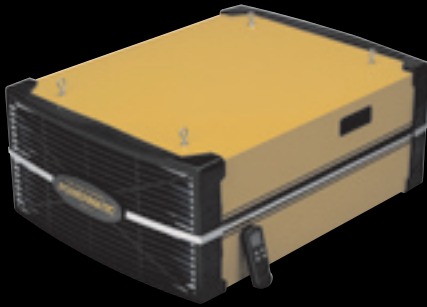
LIST PRICE \$1181.00

**\$969<sup>99</sup>**

STOCK NO. 1790800K



STOCK NO.	DESCRIPTION	LIST PRICE	SALE PRICE	POWER SAVINGS
1790800K	PF-33, Power Feeder, 1HP, 3Ph, 230V, 4 SPD	\$1,181.00	\$969.99	\$211.01
1790807K	PF-31, Power Feeder, 1HP, 1Ph, 115V, 4 SPD	\$1,283.00	\$1,099.99	\$183.01
1790810K	PF-33, Power Feeder, 1HP, 3Ph, 460V, 4 SPD	\$1,174.00	\$969.99	\$204.01
1790811K	PF-43 Power Feeder, 1HP, 3Ph, 230V, 4 SPD	\$1,310.00	\$1,099.99	\$210.01
1790812K	PF-41 Power Feeder, 1HP, 1Ph, 115V, 4 SPD	\$1,450.00	\$1,199.99	\$250.01



LIST PRICE \$561.00

**\$469<sup>99</sup>**

STOCK NO. 1791330



### PM1200 AIR FILTRATION SYSTEM

- System has two filters, plus a diffuser to disperse exhausted air
- Remote control operates on radio frequency for wider range of effectiveness
- Timer has nine settings, for up to nine hours of continuous operation
- Inner filter has fine mesh pockets for high efficiency, can be blown or washed clean
- Electrostatic outer filter is disposable



STOCK NO.	DESCRIPTION	LIST PRICE	SALE PRICE	POWER SAVINGS
1791330	PM1200 Air Filtration System	\$561.00	\$469.99	\$91.01

### 14" BANDSAW

- Chip blower ensures a clean, visible cut line
- Durable micro-adjustable dual bearing blade guide system above and below the table for close blade control with less friction
- Exclusive design, quick-release precision T-square style rip fence with 4" resaw attachment
- Precision balanced, nine spoke cast iron wheels reduce vibration



LIST PRICE \$1478.00

**\$1199<sup>99</sup>**

STOCK NO. 1791216K



### PM2800, 18" VARIABLE SPEED DRILL PRESS

- Powered by a heavy duty 1HP, 1Ph, 115/230V TEFC motor for the big jobs
- Head mounted dual laser guide system provides a consistent drilling cross point on workpiece
- A new, larger table system with dual extensions for the largest woodworking table on the market; features twin T-slot grooves for a miter gauge or other homemade jigs
- Built-in dual LED work light eliminates cast shadows



LIST PRICE \$1152.00

**\$949<sup>99</sup>**

STOCK NO. 1792800



STOCK NO.	DESCRIPTION	LIST PRICE	SALE PRICE	POWER SAVINGS
1791216K	PWBS-14CS, 14" Bandsaw w/ stand	\$1,478.00	\$1,199.99	\$278.01

STOCK NO.	DESCRIPTION	LIST PRICE	SALE PRICE	POWER SAVINGS
1792800	PM2800, 18" Variable Speed Drill Press	\$1,152.00	\$949.99	\$202.01

### PM701 BENCHTOP DELUXE MORTISER

- In-line depth stop allows stopping at pre-set depths without racking the bit to the base
- Heavy-duty reversible handle can be installed to either side of the head without tools
- Stock hold-down with a double lock system, top and side, to eliminate slippage of workpiece



LIST PRICE \$549.00

**\$459<sup>99</sup>**

STOCK NO. 1791310



### 719T TILT TABLE MORTISER WITH STAND

- Sturdy cast iron construction with precision-machined column and table
- Quick position table mounted swiveling vise clamp accommodates angled work pieces
- Feed lever features size positions allowing for quick adjustments



LIST PRICE \$1290.00

**\$1199<sup>99</sup>**

STOCK NO. 1791264K



STOCK NO.	DESCRIPTION	LIST PRICE	SALE PRICE	POWER SAVINGS
1791310	PM 701 Benchtop Deluxe Mortiser	\$549.00	\$459.99	\$89.01

STOCK NO.	DESCRIPTION	LIST PRICE	SALE PRICE	POWER SAVINGS
1791264K	719T Tilt Table Mortiser with Stand	\$1,290.00	\$1,199.99	\$90.01



**1x 2x 3x**  
**REBATES**  
**SAVE UP TO \$900**  
WITH MULTIPLE REBATES



PRICING EFFECTIVE: SEPTEMBER 1 – DECEMBER 31, 2008

OFFER AVAILABLE AT PARTICIPATING DEALERS ONLY WHILE SUPPLIES LAST. WMH TOOL GROUP RESERVES THE RIGHT TO CORRECT ANY PRICING, PRODUCT SPECIFICATIONS OR IMAGE DISCREPANCIES.  
©2008 WMH Tool Group, Inc. All Rights Reserved. Printed in the U.S.A. The color GOLD is a registered trademark of WMH Tool Group, Inc.

Stock No. 901260  
200M 8/08

WMH TOOL GROUP, INC.  
Elgin, IL 60124  
wmhtoolgroup.com