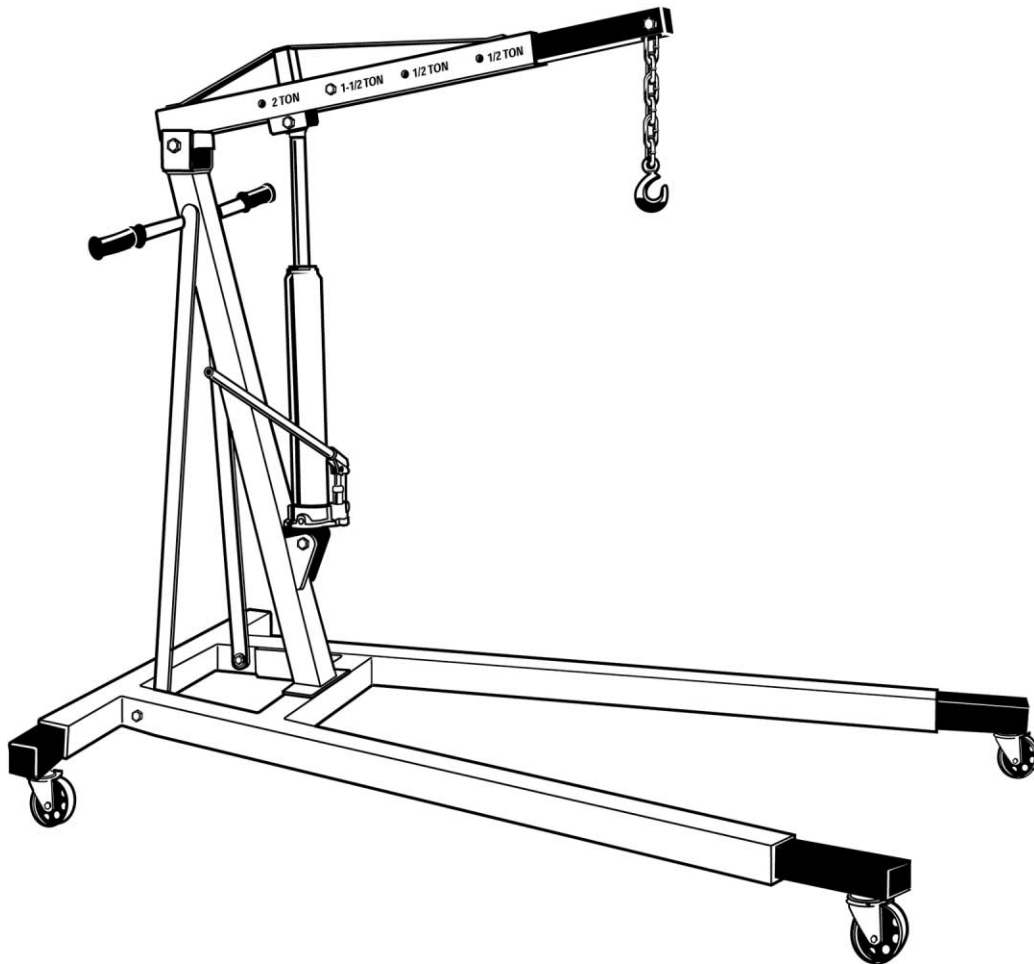


JET[®]

WMH TOOL GROUP

Operating Instructions and Parts Manual 2-Ton Hydraulic Shop Crane Model JHC-200X



WMH TOOL GROUP

2420 Vantage Drive
Elgin, Illinois 60123
Ph.: 800-274-6848
www.wmhtoolgroup.com

Part No. M-106200
Revision B 5/05
Copyright © WMH Tool Group

This manual has been prepared for the owner and operators of a JET JCH-200X Shop Crane. Its purpose, aside from machine operation, is to promote safety using accepted operating and maintenance procedures. To obtain maximum life and efficiency from your shop crane and to aid in using it safely, please read this manual thoroughly and follow the instructions carefully.

Warranty and Service

WMH Tool Group warrants every product it sells. If one of our tools needs service or repair, one of our Authorized Repair Stations located throughout the United States can provide quick service or information.

In most cases, a WMH Tool Group Repair Station can assist in authorizing repair work, obtaining parts, or perform routine or major maintenance repair on your JET product.

For the name of an Authorized Repair Station in your area, please call 1-800-274-6848, or visit our web site at www.wmhtoolgroup.com

More Information

Remember, WMH Tool Group is consistently adding new products to the line. For complete, up-to-date product information, check with your local WMH Tool Group distributor, or visit our web site at www.wmhtoolgroup.com

WMH Tool Group Warranty

WMH Tool Group makes every effort to assure that its products meet high quality and durability standards and warrants to the original retail consumer/purchaser of our products that each product be free from defects in materials and workmanship as follows: 1 YEAR LIMITED WARRANTY ON ALL PRODUCTS UNLESS SPECIFIED OTHERWISE. This Warranty does not apply to defects due directly or indirectly to misuse, abuse, negligence or accidents, normal wear-and-tear, repair or alterations outside our facilities, or to a lack of maintenance.

WMH TOOL GROUP LIMITS ALL IMPLIED WARRANTIES TO THE PERIOD SPECIFIED ABOVE, BEGINNING FROM THE DATE THE PRODUCT WAS PURCHASED AT RETAIL. EXCEPT AS STATED HEREIN, ANY IMPLIED WARRANTIES OR MERCHANTABILITY AND FITNESS ARE EXCLUDED. SOME STATES DO NOT ALLOW LIMITATIONS ON HOW LONG THE IMPLIED WARRANTY LASTS, SO THE ABOVE LIMITATION MAY NOT APPLY TO YOU. IN NO EVENT SHALL WMH TOOL GROUP BE LIABLE FOR DEATH, INJURIES TO PERSONS OR PROPERTY, OR FOR INCIDENTAL, CONTINGENT, SPECIAL, OR CONSEQUENTIAL DAMAGES ARISING FROM THE USE OF OUR PRODUCTS. SOME STATES DO NOT ALLOW THE EXCLUSION OR LIMITATION OF INCIDENTAL OR CONSEQUENTIAL DAMAGES, SO THE ABOVE LIMITATION OR EXCLUSION MAY NOT APPLY TO YOU.

To take advantage of this warranty, the product or part must be returned for examination, postage prepaid, to an Authorized Repair Station designated by our office. Proof of purchase date and an explanation of the complaint must accompany the merchandise. If our inspection discloses a defect, we will either repair or replace the product at our discretion, or refund the purchase price if we cannot readily and quickly provide a repair or replacement. We will return the repaired product or replacement at WMH Tool Group's expense, but if it is determined there is no defect, or that the defect resulted from causes not within the scope of WMH Tool Group's warranty, then the user must bear the cost of storing and returning the product. This warranty gives you specific legal rights; you may also have other rights, which vary from state to state.

WMH Tool Group sells through distributors only. Members of the WMH Tool Group reserve the right to effect at any time, without prior notice, alterations to parts, fittings and accessory equipment, which they may deem necessary for any reason whatsoever.

 **WARNING**

1. Study and understand all operating instructions before operating crane.
2. Do not exceed the rated capacity of the crane (position 1, 1/2 ton; position 2, 1 ton; position 3, 1-1/2 ton; position 4, 2 ton. See Figure 1.
3. Assure that the load is not allowed to drop suddenly or swing during transporting.
4. Make sure that boom is fully lowered before adding oil to unit reservoir.
5. This shop crane is designed for use only on hard, level surfaces capable of sustaining the load. Use on other than hard level surfaces can result in shop crane instability and possible loss of load.
6. Slowly lower boom and load to the lowest possible position before transporting load.
7. Assemble crane according to the owner's manual. Make sure all bolts and nuts are tight before placing crane into operation.
8. Do not use crane for any other purpose than for which it was designed and intended.
9. Crane legs must always extend beyond the boom and each leg must be extended to the same length.
10. Do not extend any leg farther than red warning indicator line on each leg.
11. Boom extension hardware must be secure before attempting to lift any load.
12. Never place any part of the body under the load or crane while in use.
13. Never use the crane as the only means of support. Always move the load to a stable platform or work surface before attempting any work.
14. Keep others away from the area while the crane is in operation.
15. Before attempting to raise load, make sure it is securely fastened and safety latches are secure.
16. Do not operate crane with twisted or kinked chain.
17. Do not remove labels from crane.
18. Never use crane for lifting people or loads over people.
19. Do not remove ram and use separately for any purpose.
20. Never operate the crane under the influence of medication, drugs or alcohol.
21. Failure to comply with all of these warnings may result in loss of load, damage to the shop crane, and/or failure resulting in personal injury or property damage.

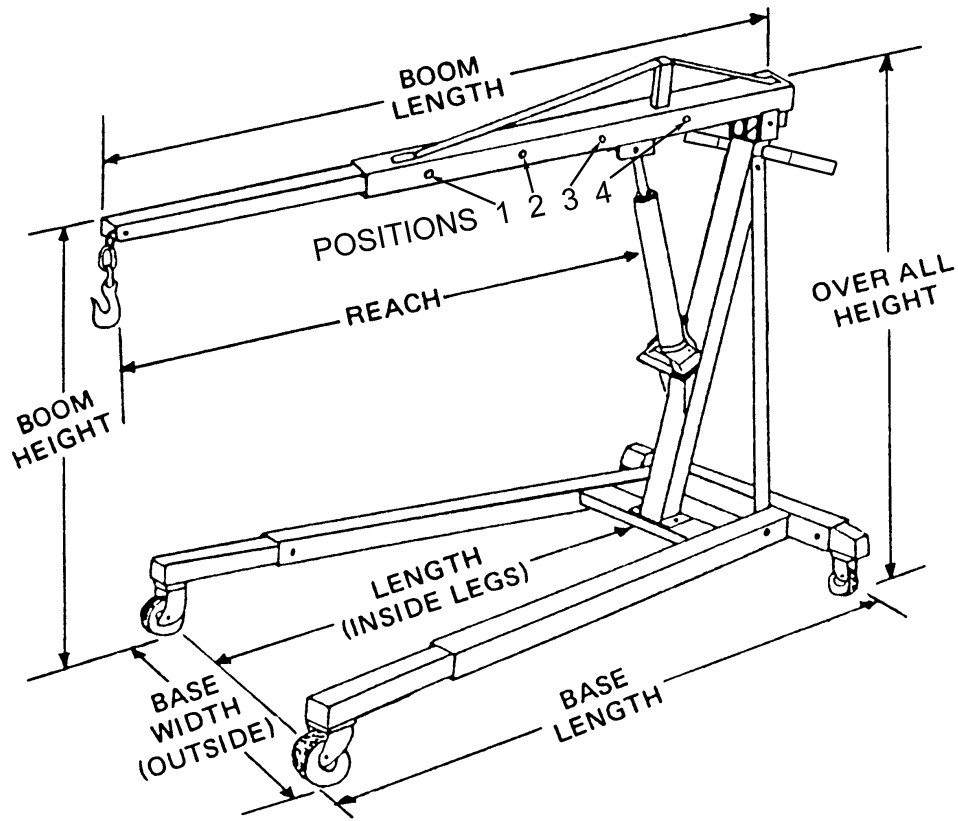


Figure 1

CAPACITY (TONS)	BOOM HEIGHT		BOOM LENGTH	REACH	OVERALL HEIGHT	BASE LENGTH		BASE WIDTH (OUTSIDE)		LENGTH INSIDE LEGS		WHEEL DIAMETER	CHAIN SIZE	NET WEIGHT (LBS)
	MAX	MIN				MAX	MIN	MAX	MIN	MAX	MIN			
1/2 T Position 1	92-1/2"	3"	81"	60-1/2"	56-3/8"	94-1/2"	63-1/4"	37"	31"	76"	44-3/4"	3-1/2"	.375"x1.57"x7"	273 lbs.
1T Position 2	86-3/4"	7-3/4"	72"	51-1/2"	56-3/8"	94-1/2"	63-1/4"	37"	31"	76"	44-3/4"	3-1/2"	.375"x1.57"x7"	273 lbs.
1-1/2 T Position 3	81"	12-1/2"	63"	42-1/2"	56-3/8"	94-1/2"	63-1/4"	37"	31"	76"	44-3/4"	3-1/2"	.375"x1.57"x7"	273 lbs.
2 T Position 4	75-1/4"	17-1/4"	54"	33-1/2"	56-3/8"	94-1/2"	63-1/4"	37"	31"	76"	44-3/4"	3-1/2"	.375"x1.57"x7"	273 lbs.

Assembly Instructions

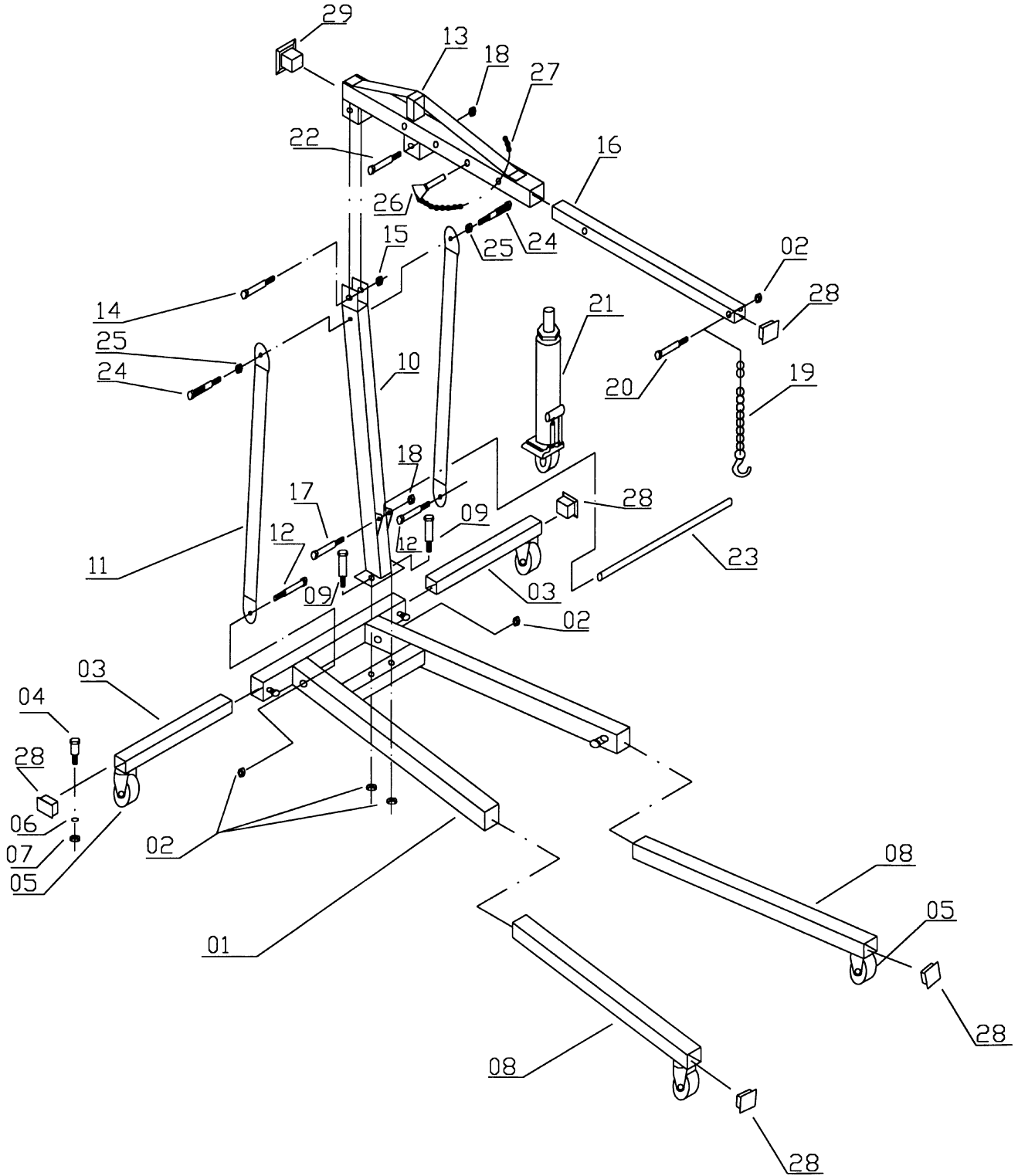
Note: Refer to parts breakdown for part numbers found in parenthesis (#):

1. Slide short extension legs (03) into the rear support of base (01). Tighten bolts to hold in place.
2. Slide long extension legs (08) into front supports of base (01). Tighten bolts to hold in place.
3. Connect post (10) to base (01) with two M12 x 25 hex cap bolts (09) and two M12 nuts (02).
4. Attach supports (11) to base (01) and top of post (10) using three M12 x 100 hex cap bolts and three M12 nuts (15). Tighten firmly.
5. Connect boom (13) to post (10) using one M20 x 125 hex cap bolt (14) and one M20 nut (15).
6. Slide boom extension (16) into boom (13) and fasten with one adjustment pin (26) and one hitch pin (27).
7. Bolt lower portion of ram (21) to post (10) using one M16 x 100 hex cap bolt (17) and one M16 nut (18).
8. Bolt upper portion of ram (21) to boom (13) using one M16 x 75 (22) hex cap bolt and one M16 nut (18).
9. Insert small covers (28) into the short extension legs (03), long extension legs (08), and boom extension (16). Insert big cover (29) into back end of boom (13).

Operation

1. Load to be lifted must be securely attached with slings or chain of adequate size and strength. Before lifting the load, be sure load cannot twist, or fall from attachment.
2. Move crane into position. Legs must be extended out beyond the boom extension.
3. Close hydraulic valve at base of ram by inserting groove in handle into valve, and turning clockwise until tight.
4. Place slings, or chains in center of hook and make sure safety latch is securely latched.
5. Slowly raise load to desired height by inserting handle into ram and pumping handle. Be careful to note if the load wants to shift, and keep load from rotating or swinging.
6. Move load to desired location by rolling crane assembly. Use caution so that load does not swing or rotate.
7. Carefully lower load to desired location by inserting ram handle into valve at base of ram, and slowly turning counter-clockwise. Do not lower too quickly, and confirm load is secure once lowered fully.

Parts Breakdown for JHC-200X

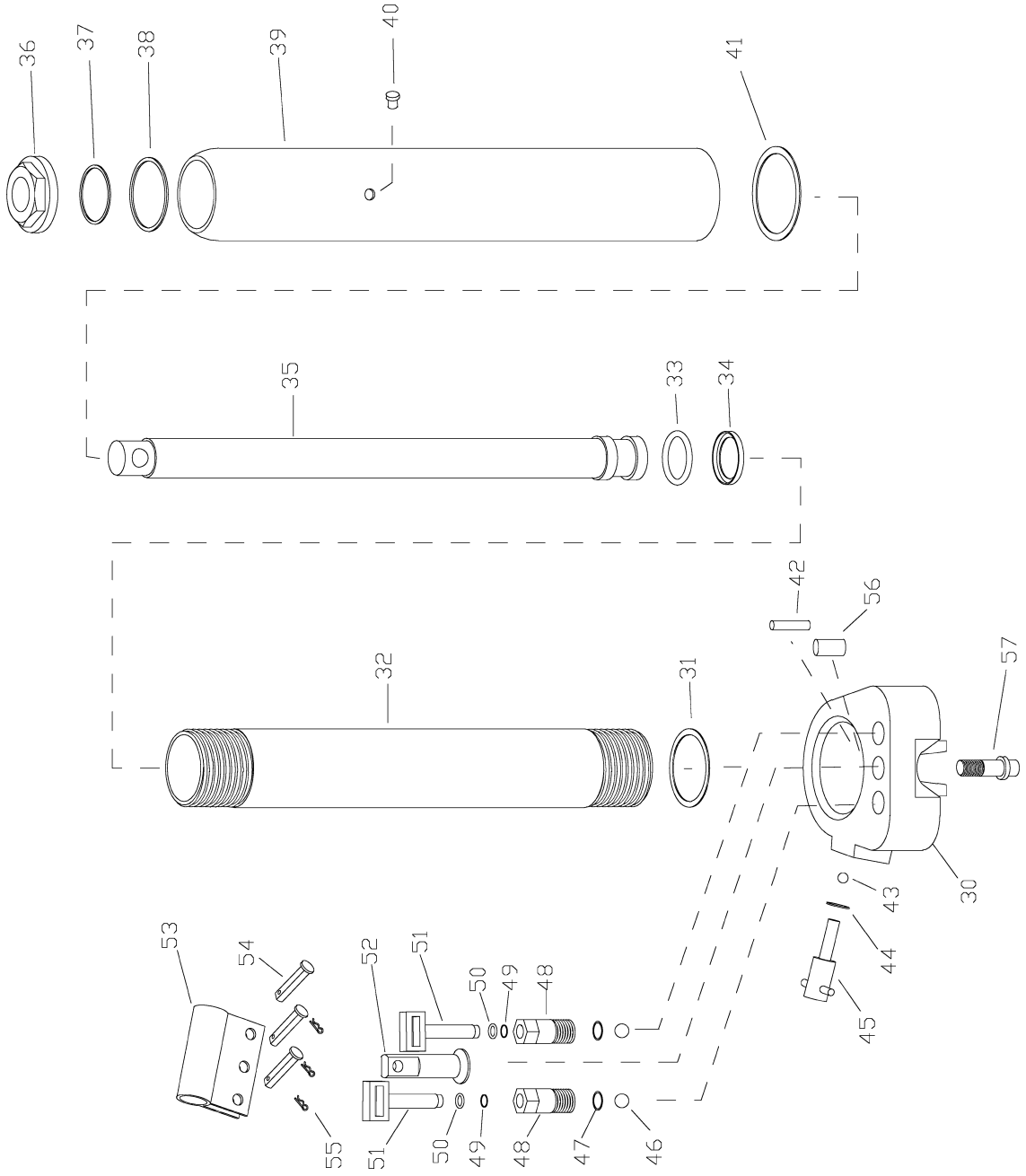


Parts List for JHC-200X

Index No.	Part No.	Description	Size	Qty.
01	JHC200X-01	Base		1
02	TS-1540081	Hex Nut	M12	6
03	JHC200X-03	Extension Leg (short)		2
04	TS-1490031	Hex Cap Bolt	M8×20	16
05	JHC200X-05	Caster Assembly**		4
06	TS-1551061	Lock Washer	M8	16
07	TS-1540061	Hex Nut	M8	16
08	JHC200X-08	Extension Leg (long)		2
09	TS-1492011	Hex Cap Bolt	M12×25	2
10	JHC200X-10	Post		1
11	JHC200X-11	Support		2
12	TS-1492101	Hex Cap Bolt	M12×100	2
13	JHC200X-13	Boom		1
14	JHC200X-14	Hex Cap Bolt	M20×125	1
15	TS-1540121	Hex Nut	M20	1
16	JHC200X-16	Boom Extension		1
17	JHC200X-17	Hex Cap Bolt	M16×100	1
18	TS-1540101	Hex Nut	M16	3
19	JHC200X-19	Load Hook w/chain**		1
20	TS-1499141	Hex Cap Bolt	M12×80	1
21	JFHC200X-6	Ram Assembly**		1
22	JHC200X-22	Hex Cap Bolt	M16×75	1
23	JHC200X-23	Handle**		1
24	JHC200X-24	Steering Handle		2
25	JHC200X-25	Washer		2
26	JHC200X-26	Adjustment Pin		1
27	JHC200X-27	Hitch Pin		1
28	JHC200X-28	Small Cover**		5
29	JHC200X-29	Big Cover**		1
	JHC200X-RK	Repair Kit for Ram (not shown)**		1

**Stock Parts: all others available by special order only.

Hydraulic Ram Assembly



Hydraulic Ram Assembly

Index No.	Part No.	Description	Size	Qty.
	JFHC200X-6	Hydraulic Ram Assembly		1
30	JFHC200X-30	Valve Body		1
31	JFHC200X-31	Copper Washer *	M46	1
32	JFHC200X-32	Cylinder		1
33	JFHC200X-33	O-ring *	M40x5.5	1
34	JFHC200X-34	O-ring Retainer *	M31.3x3.55	1
35	JFHC200X-35	Ram		1
36	JFHC200X-36	Top Nut	M48	1
37	JFHC200X-37	O-ring *	M33.5x3.55	1
38	JFHC200X-38	Gasket *	M70x1	1
39	JFHC200X-39	Oil Chamber		1
40	JFHC200X-40	Oil Plug *	M15x9.5	1
41	JFHC200X-41	Seal Ring *	M81x4	1
42	JFHC200X-42	Tube		1
43	SB-6MM	Steel Ball	M6	1
44	JFHC200X-44	Seal Ring *	M88x6	1
45	JFHC200X-45	Release Valve		1
46	SB-6MM	Steel Ball	M6	2
47	JFHC200X-47	Copper Washer *	M18	2
48	JFHC200X-48	Pump Cylinder		2
49	JFHC200X-49	O-ring *	M66x3	2
50	JFHC200X-50	Back-up Ring *	M12x7	2
51	JFHC200X-51	Plunger		2
52	JFHC200X-52	Link Pin		1
53	JFHC200X-53	Handle Socket		1
54	JFHC200X-54	Connecting Pin		3
55	JFHC200X-55	Cotter Pin		3
56	JFHC200X-56	Pin	M2x30	1
57	JFHC200X-57	Bolt	M14x45	1
	JFHC200X-RK	Ram Repair Kit (* indicates included with repair kit)		



TEST CERTIFICATE

COMMODITY	Hydraulic Shop Crane
MODEL	JHC-200X
SERIAL NO.	
CAPACITY	2 Ton
TEST LOAD	2 Ton
DATE OF INSPECTION	
JUDGEMENT	PASSED
INSPECTOR	

WMH Tool Group
2420 Vantage Drive
Elgin, Illinois 60123
Phone: 800-274-6848
www.wmhtoolgroup.com