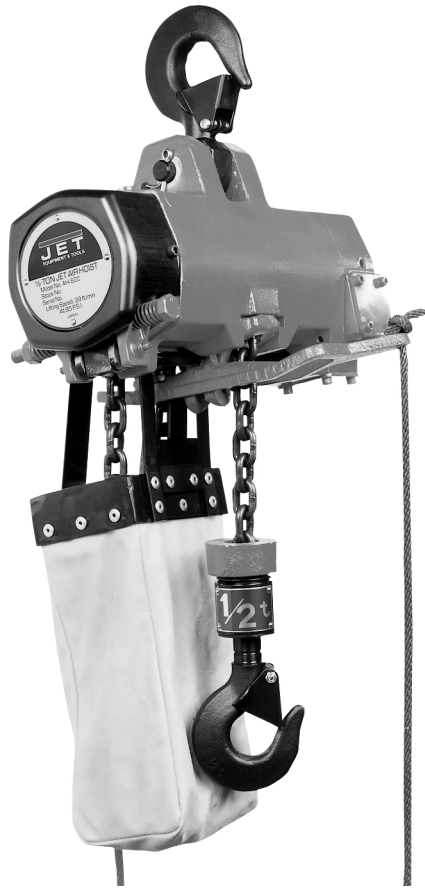




OWNER'S MANUAL

AH-25C/50C/100C Air Hoists



JET EQUIPMENT & TOOLS, INC.
A WMH Company
www.jettools.com

P.O. BOX 1349
Auburn, WA 98071-1349
e-mail jet@jettools.com

Phone: 253-351-6000
Fax: 1-800-274-6840
M-105970 11/01

This manual has been prepared for the owner and operators of Model AH-25C/50C/100C Air Hoists. Its purpose, aside from hoist operation, is to promote safety through the use of accepted correct operating and maintenance procedures. Completely read the safety and maintenance instructions before operating or servicing the hoist. To obtain maximum life and efficiency from your Air Hoist, and to aid in using the hoist safely, read this manual thoroughly and follow instructions carefully.

Warranty & Service

The JET Group warrants every product it sells. If one of our tools needs service or repair, one of our Authorized Repair Stations located throughout the United States can give you quick service.

In most cases, any one of these JET Group Repair Stations can authorize warranty repair, assist you in obtaining parts, or perform routine maintenance and major repair on your JET, Performax or Powermatic tools.

For the name of an Authorized Repair Station in your area, please call 1-800-274-6848, or visit www.jettools.com.

More Information

Remember, the JET Group is consistently adding new products to the line. For complete, up-to-date product information, check with your local JET Group distributor, or visit www.jettools.com.

JET Group Warranty

The JET Group (including Performax and Powermatic brands) makes every effort to assure that its products meet high quality and durability standards and warrants to the original retail consumer/purchaser of our products that each product be free from defects in materials and workmanship as follow: 1 YEAR LIMITED WARRANTY ON ALL PRODUCTS UNLESS SPECIFIED OTHERWISE. This Warranty does not apply to defects due directly or indirectly to misuse, abuse, negligence or accidents, normal wear-and-tear, repair or alterations outside our facilities, or to a lack of maintenance.

THE JET GROUP LIMITS ALL IMPLIED WARRANTIES TO THE PERIOD SPECIFIED ABOVE, FROM THE DATE THE PRODUCT WAS PURCHASED AT RETAIL. EXCEPT AS STATED HEREIN, ANY IMPLIED WARRANTIES OR MERCHANTABILITY AND FITNESS ARE EXCLUDED. SOME STATES DO NOT ALLOW LIMITATIONS ON HOW LONG THE IMPLIED WARRANTY LASTS, SO THE ABOVE LIMITATION MAY NOT APPLY TO YOU. THE JET GROUP SHALL IN NO EVENT BE LIABLE FOR DEATH, INJURIES TO PERSONS OR PROPERTY, OR FOR INCIDENTAL, CONTINGENT, SPECIAL, OR CONSEQUENTIAL DAMAGES ARISING FROM THE USE OF OUR PRODUCTS. SOME STATES DO NOT ALLOW THE EXCLUSION OR LIMITATION OF INCIDENTAL OR CONSEQUENTIAL DAMAGES, SO THE ABOVE LIMITATION OR EXCLUSION MAY NOT APPLY TO YOU.

To take advantage of this warranty, the product or part must be returned for examination, postage prepaid, to an Authorized Repair Station designated by our office. Proof of purchase date and an explanation of the complaint must accompany the merchandise. If our inspection discloses a defect, we will either repair or replace the product, or refund the purchase price if we cannot readily and quickly provide a repair or replacement, if you are willing to accept a refund. We will return repaired product or replacement at JET'S expense, but if it is determined there is no defect, or that the defect resulted from causes not within the scope of JET'S warranty, then the user must bear the cost of storing and returning the product. This warranty gives you specific legal rights; you may also have other rights which vary from state to state.

The JET Group sells through distributors only. Members of the JET Group reserve the right to effect at any time, without prior notice, those alterations to parts, fittings, and accessory equipment which they may deem necessary for any reason whatsoever.

WARNING

- **Read and understand the entire contents of this manual before attempting to use the air hoist.**
 - **This air hoist is designed and intended for use by properly trained and experienced personnel only. If you are not familiar with the proper and safe use of an air hoist, do not use until proper training and knowledge has been obtained.**
 - **Safety Codes and Acts for elevators, lifting people, and dumbwaiters specify construction details that may not be incorporated in your hoist. For such applications, refer to ANSI Code A17.1 (as revised) for elevators, dumbwaiters, escalators, and moving walks.**
1. **Read** and understand ANSI Code B30.16 for Overhead Hoists before placing the hoist into service. Installation, operation, and maintenance of your hoist must be done in accordance with the above Codes and Acts for your personal safety.
 2. **Know** the hoist operating controls, procedures and warnings.
 3. **Repair** all air leaks.
 4. **Keep** all air lines clean and dry.
 5. **Maintain** firm footing when operating hoist controls.
 6. **Use** properly sized load slings and seat firmly in hook.
 7. **Close** hook latch and keep load away from latch.
 8. **Move** load only when free and all obstacles can be cleared.
 9. **Take** up slack slowly, check balance and load before lifting further.
 10. **Avoid** swinging load and hook.
 11. **Keep** all personnel clear of suspended load.
 12. **Warn** all personnel of approaching load.
 13. **Protect** load chain from weld spatter and other contaminants.
 14. **Promptly** report any malfunction, damage, or unusual operation.
 15. **Inspect** hoist regularly and keep appropriate records.
 16. **Use** only JET replacement parts when repairing any part of the hoist system.
 17. **Use** hook latches whenever possible.
 18. **Lubricate** the load chain regularly as recommended.
 19. **Lift** no more than the rated load of the weakest component.
 20. **Lift** only loads that you are certain will not overload hoist system.
 21. **Measure** load properly, not with the load limiting device.
 22. **Report** and do not use a hoist with a kinked, twisted, damaged or worn chain.
 23. **Lift** only with chain properly seated in all chain wheels and sprockets.
 24. **Load** hoist gradually and avoid all sudden shock loading of hoist system.
 25. **Use** the load chain as intended, do not wrap it around load or use as a sling.
 26. **Load** all slings, ropes, and chains equally.
 27. **Apply** no loads to the tip of the hook.
 28. **Center** load under the hoist before lifting.
 29. **Pay** full attention to the operation of the hoist.
 30. **Operate** hoist only to the limit of the chain travel.
 31. **Use** the proper controls, not the limit switches, to stop the load.
 32. **Lift**, support, and transport materials only, never use for personnel.
 33. **Lift** loads around, never over, personnel.
 34. **Secure** suspended loads if left unattended.
 35. **Sharp** contact between hoist and obstructions is to be avoided.
 36. **Use** no part of the hoist as a ground for welding.
 37. **Keep** all live welding electrodes away from hoist.
 38. **Keep** welding heat away from all hoist parts.
 39. **Keep** all warning and operating labels in good condition.
 40. **Allow** only qualified personnel to repair and maintain hoist.
 41. **Replace** a short or damaged load chain instead of attempting to lengthen or repair.
 42. **Unload** hoist before performing maintenance.

Table of Contents

Page

Warranty	2
Warnings.....	3
Table of Contents	4
Specifications	4
Installation	5
Air Source Requirements.....	5
Receiving the Hoist.....	6
Installing Attachments.....	6
Attaching Air Lines.....	6
Attaching Pendant Control	7
Initial Operation	8
Routine Operation	8
Inspection and Maintenance	9
Lubrication.....	9
Troubleshooting.....	9
Brake Adjustment	10
Disassembly	10-12
Assembly.....	12
Replacing Load Chain.....	13
Allowable Wear Limits	14
Ordering Replacement Parts.....	15
Parts Breakdowns and Parts List.....	16-24
Test Certificate	25

Specifications

Stock Number	105970	105971	105972	105973	105974
Model	AH-25C-10	AH-50C-10	AH-50C-20	AH-100C-10	AH-100C-20
Capacity (lbs)	550	1,100	1,100	2,200	2,200
Lifting Speed at Rated Load (fpm)/ Air Pressure (psi)	59/85 53/70 46/57	39/85 33/70 26/57	39/85 33/70 26/57	20/85 16/70 13/57	20/85 16/70 13/57
Air Consumption (CFM)/ at Air Pressure (psi)	71/85 53/70 36/57	71/85 53/70 36/57	71/85 53/70 36/57	71/85 53/70 36/57	71/85 53/70 36/57
Number of Falls	1	1	1	2	2
Headroom (in)	17-1/8	17-1/8	17-1/8	20-7/8	20-7/8
Standard Lift (ft)	10	10	20	10	20
Air Inlet (NPT)	1/2	1/2	1/2	1/2	1/2
Net Wt. (lbs)	51	51	52	57	69

The specifications in this manual are given as general information and are not binding. JET Equipment & Tools reserves the right to effect, at any time and without prior notice, changes or alterations to parts, fittings, and accessory equipment deemed necessary for any reason whatsoever.

Installation

Hoist Support System

It is beyond the scope of this manual to direct the installation of the I-beam or other supporting system needed for your JET hoist. Use of properly licensed professional installation assistance is strongly recommended to ensure maximum safety and performance. CUSTOMER IS RESPONSIBLE FOR ALL DAMAGE AND INJURY CAUSED BY IMPROPER INSTALLATION OF THE JET HOIST. Contact JET Equipment & Tools if in question about any phase of the hoist installation.

Air Source Requirements

Your JET model AH-C series hoist requires a source of clean, dry, lubricated air to operate. Air pressure, measured at the hoist air inlet port, should be regulated to maintain 55-85 psi at all times. The plant air delivery system must be capable of delivering 71 cubic feet of air per minute at 85 psi to lift the maximum weight at the maximum lift speed.

The air supply port on the hoist motor is ½". A ½" air delivery line from the plant supply is acceptable if 30' or less. Runs over 30' should be made using ¾" air lines.

The air filter, regulator, and line oiler (in that order, beginning at the plant supply) should be plumbed as close to the air hoist as practical. Installing a drain valve at the lowest point in the supply line is also highly recommended. Set the air lubricator to deliver 4-6 drops per minute at full air consumption.

Note: The JET air hoist you have purchased uses a shuttle type throttle valve. This type of throttle valve has proven to be very reliable and prevents unintentional starting of the air hoist.

With this type of throttle valve, you can expect a small amount of air to bypass the throttle valve when the throttle is in the "off" position. This is a normal condition and will not effect the safety, reliability, or the service life of the hoist. We suggest a shut-off valve be placed in the supply line to the hoist so that air is shut off when the hoist is not in use.

The air supplied to your new hoist must be free of water and contain a small amount of air tool oil, such as JET Marvel Air Tool Oil. This oil is

available through any authorized JET distributor.

To maintain the quality and safety of your JET hoist, use only JET service parts when making repairs. Parts of unknown origin may compromise the safety of your hoist.

Receiving Hoist

After opening the packaging, check that all parts are present and undamaged. Check the specification plate on the hoist to confirm the hoist lift rating is correct per your purchase order.

Your JET air hoist is shipped fully assembled. Check that all shipping packaging is removed from the hoist, particularly in and around the gear mechanisms and lift chains. Remove all tape, wire, and other foreign materials from around the chain. The hoist is then ready to install the pull cord or pendant handle.

Installing Attachments

Install the pull cord (Figure 1) or the pendant handle to the hoist body (Figure 2). The pull cord or air tube is color coded as shown in Figures 1, and 2.

⚠ WARNING
Improperly installing air lines may lead to hoist movement different than control indication. For maximum safety do not operate hoist with improperly connected air lines.

Attaching Air Lines

Prior to installing air line to motor, open the supply and flush out line.

CAUTION!
Debris entering the hoist motor may extensively damage motor and void warranty. All such damage is considered installation negligence and is not covered by the hoist warranty.

Squirt 10-15 drops of oil into the air supply port before attaching air supply line.

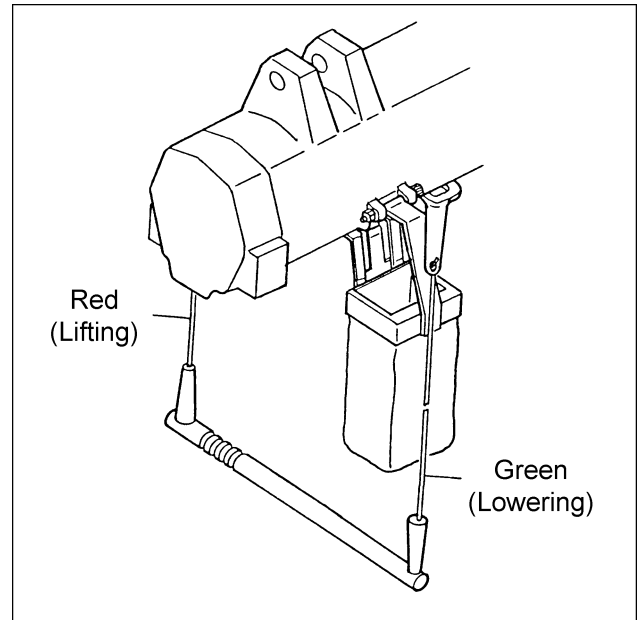


Fig. 1

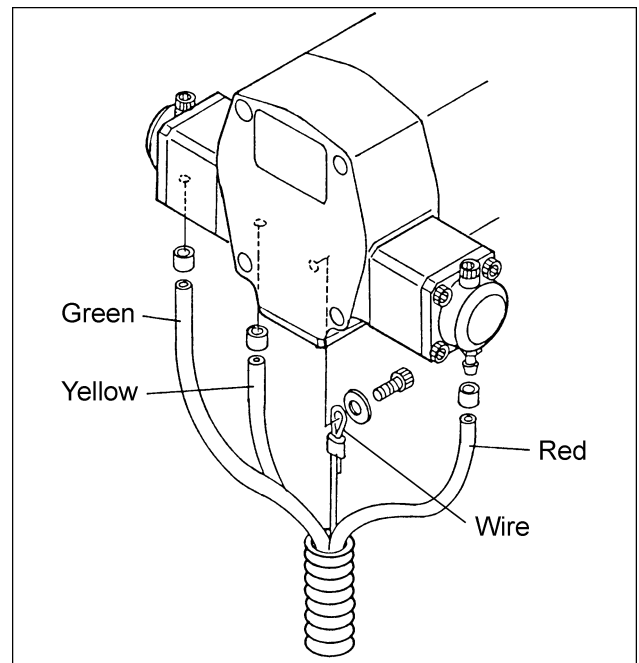


Fig. 2

Optional Pendant Control

Attaching Pendant Control

The pendant control is shipped fully assembled ready for attachment to the hoist.

1. From the side of valve casing remove four screws (D, Fig. 3), valve cover (A, Fig. 3), packing (B, Fig. 3), and spring (C, Fig. 3).
2. Remove screw (E, Fig. 3) and packing (F, Fig. 3) from bottom of valve casing.

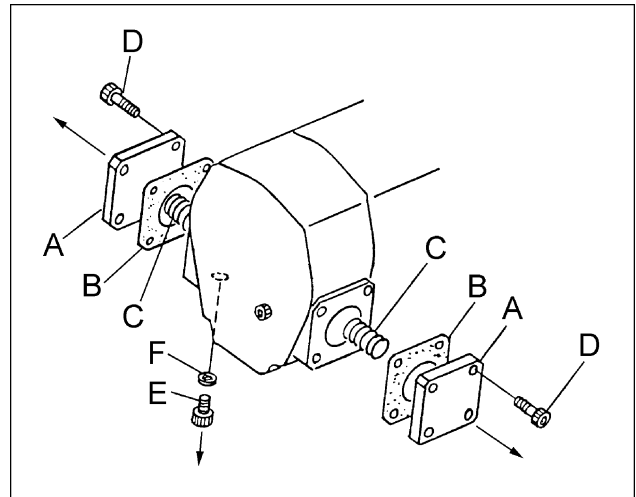


Fig. 3

3. Place spring (C, Fig. 4) onto pendant cylinder plunger. Place cylinder (7, Fig. 4) and packing (B, Fig. 4) on valve casing and attach with four screws (34, Fig. 4).
4. Attach support wire (28, Fig. 4) with screw (36, Fig. 4) and washer (17, Fig. 4) to the bottom of valve casing.
5. Place packing (24, Fig. 4) onto tube nipple (23, Fig. 4) and screw into bottom of valve casing.
6. Attach tubes (20, 21 & 22) to the nipples, observing the correct connection for each color tube.
7. Slide sleeve over nipple to secure tube to nipple.

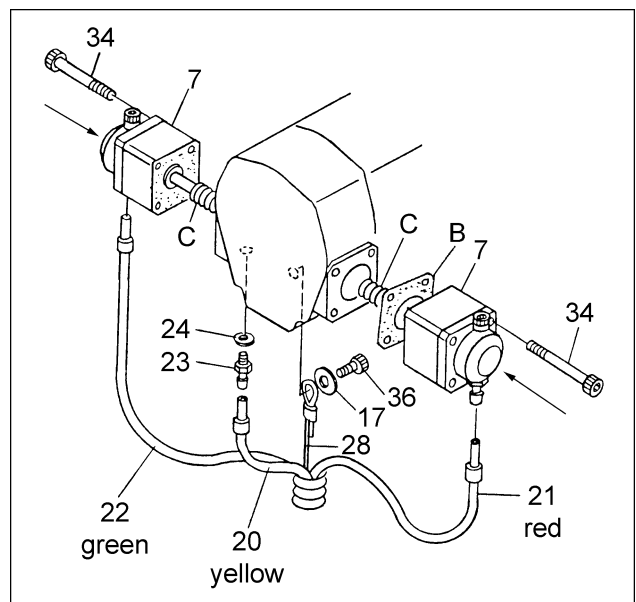


Fig. 4

Initial Operation

After confirming that all hoist operations are correct, slowly raise and lower the hoist the full travel distance five times while closely observing the hoist. Hoist motor should operate smoothly with no jerking or unusual sounds. If difficulty is encountered, contact your local distributor, or JET Technical Service (1-800-274-6846) before placing the hoist into service.

Your JET hoist is equipped with a "chain stopper" that closes the air supply to the hoist motor when the hook reaches the maximum up, or down position. Test the function of the chain stopper by slowly raising and lowering the hook to the maximum positions.

CAUTION!

Do not operate hoist with the valve lever out of position or the chain stopper inoperative.

Routine Operation

1. Check load weight. It must not be over the hoist system rating.
2. On double fall hoists it is possible for the hook to rotate through the chain loop, causing a twist in the chain. Always inspect for chain twist before attaching hook to load.
3. Sling load properly.
4. Place sling lifting eye in hoist hook and close hook latch.
5. Check that sling and/or rigging have not shifted and the hoist is located directly over the center of balance of the load.
6. Remove all slack in lift chain.
7. Increase tension in the lift chain until hoist is about to lift load.
8. Check again that the load is properly slung, directly under the hoist, and will not suddenly swing or twist as the load is fully supported by hoist.
9. Lift load an inch or two above ground and stop. Observe load for a few moments. Look for signs that the load or hoist system is unstable, or anything else that may indicate a problem is developing.

10. If the hoist is mounted to traveler, lift load to the traveling height. Lift only to the height necessary to safely clear all obstacles.
11. Move load to destination professionally. Do not move load over people, dangerous or hazardous equipment, or materials.
12. Slowly lower load at destination. Wait for a moment or two before reversing load direction, if changing directions.
13. Slowly allow weight to shift from hoist to ground, or new support. Do not approach load until all tension is out of chain and sling is loose. Be prepared for load to shift until it is determined the load is stable on the new support.
14. If support is inadequate for load and collapses, causing a sharp shock to the load chain and hoist, do not re-lift load until hoist system, including chain is inspected for damage. Note all such severe shock loading of hoist system in Operator's Log.

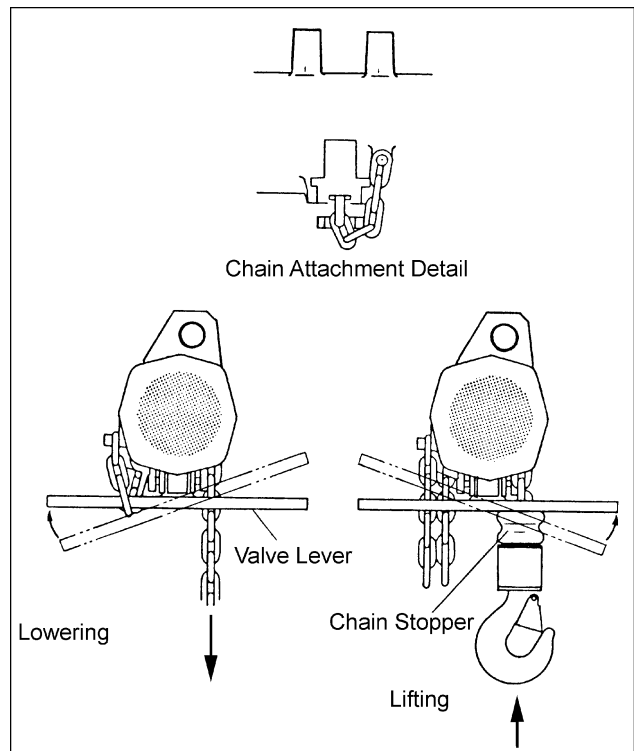



Fig. 5

Inspection and Maintenance

General

Read and follow ANSI B30.16 Inspection and Maintenance instructions. Know the meaning of Frequent Inspection, Periodic Inspection, Normal Service, Heavy Service, and Severe Service. It is the owner's responsibility to understand and follow all ANSI and JET inspection and maintenance instructions.

 **WARNING**

All repairs and adjustments are to be performed by trained and experienced personnel using procedures that are approved for the hoist system being serviced. All safety-related deficiencies discovered in the inspection are to be corrected before hoist is placed back in service. Check for internal damage whenever external damage has occurred.

1. Store the hoist in a clean, dry environment.
2. Although oiling the chain is not mandatory, it will extend chain life. Use light oil suitable for chain hoists.
3. Allow only trained and experienced JET Authorized Repair personnel to service hoist.
4. Check brake operation frequently.
5. Inspect chain and lower hook after lifting a maximum weight load.

Troubleshooting

Problem	Probable Cause
Hoist does not operate	<ol style="list-style-type: none"> 1. Insufficient air pressure or volume 2. Motor has seized from lack of lubricant 3. Motor has internal damage 4. Control valve is not operating 5. Brake is not fully released 6. Hoist is overloaded
Hoist body is hot	<ol style="list-style-type: none"> 1. Insufficient lubrication in air line 2. Brake is not fully released 3. Motor or reduction section is worn 4. Bearings improperly packed in reduction section
Hoist will not support suspended load	<ol style="list-style-type: none"> 1. Hoist is overloaded 2. Brake linings are worn 3. Brake is out of adjustment 4. Valve lever (chain stopper) is not in neutral position

6. Annually the hoist should be disassembled, inspected and cleaned using Kerosene or similar product. Re-lubricate using grease suitable for chain hoists.
7. Test hoist with no load after all service.

Lubrication

The **hoist motor** is lubricated each time the hoist is used by the air line lubricator. Do not operate the hoist if the lubricator is not functioning, or is out of oil. Suitable lubricant includes JET Marvel Air Tool Oil, ESSO Teresso 32, Mobil DTE Oil Light, Shell Turbo Oil T32, or equivalent.

The **gearcase section** in the hoist body contains bearings and gears packed in grease. Under normal operating conditions the bearings, and gears are lifetime lubricated. If the hoist is used in heavy, or severe service, the hoist must be inspected and overhauled every 6 months by a JET Authorized Repair Station. Suitable grease for repacking the gearcase includes ESSO EP 1, Mobil Mobilux EP 1, Shell EP Grease 1, or equivalent.

Lubricate the **chain** and **chain wheel** periodically with light oil suitable for chain hoists.

If hoist is idle for over 30 days it may be necessary to remove the air supply line and spray lubricant into the port to loosen up hoist motor. Operate hoist regularly to maintain smooth operation.

Brake Adjustment

Periodic adjustment is required to maintain hoist brake performance. Adjust the brake using the following procedure. Refer to the illustration (Figure 6) to identify the various components and critical dimensions.

The brake is engaged by the brake spring. To release the brake, the valve lever moves along the brake cam, rotating the brake adjuster to reduce the force on the brake shoes.

Set the brake adjuster to achieve the clearance between the adjuster and brake cam of 0.3 - 0.45 inch.

Measure the distance between the head of the brake bolt and the brake shoe. Turn the brake bolt nut to achieve a clearance of 1.06 - 1.188 inch. Replace the brake shoes if the brake is unable to hold a suspended load. Do not over tighten brake bolt nut as the spring may be permanently damaged.

Disassembly and Assembly

You will occasionally want to disassemble and clean your hoist. We recommend you contact your nearest JET Authorized Repair Station. For the repair station nearest you, contact your JET Dealer, or call Customer Relations at 1-800-274-6848, or visit www.jettools.com

CAUTION!

The following assembly and disassembly notes are intended for those installations where trained and experienced chain hoist personnel are available. JET Equipment & Tools does not recommend disassembly and reassembly be performed by anyone other than JET Authorized Repair Stations.

Disassembly

Valve Section

Remove the valve cover (15, Fig. 7), packing (16, Fig. 7), and pull out the spring (12, Fig. 7), and the spring cap (13, Fig. 7). Remove screws (71, Fig. 7) and take off the valve casing (9, Fig. 7). Take out the valve arm (14, Fig. 7) and pull out the control valve (10, Fig. 7). Remove screw (70, Fig. 7) and pull out the valve sleeve (11, Fig. 7).

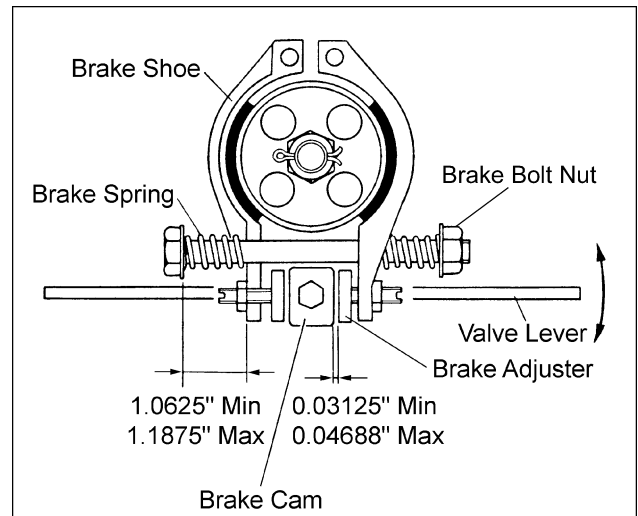


Fig. 6

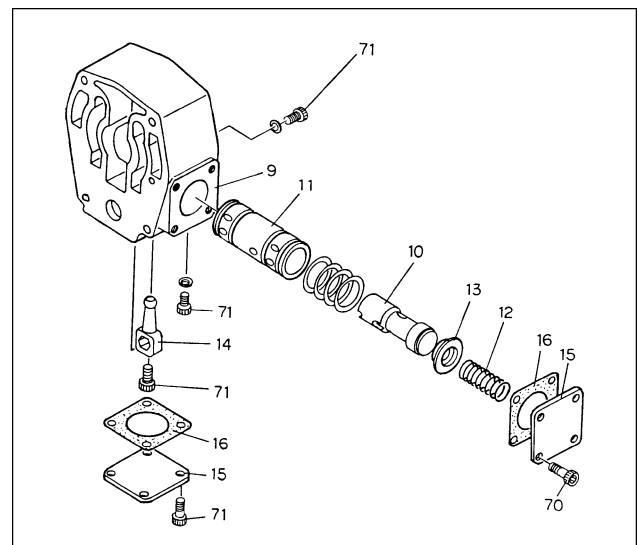


Fig. 7

Motor Section

Remove snap ring (54, Fig. 8). The rotor case (2, Fig. 8), rotor (3, Fig. 8), vanes (4, Fig. 8), and side plate (8, Fig. 8) can now be disassembled.

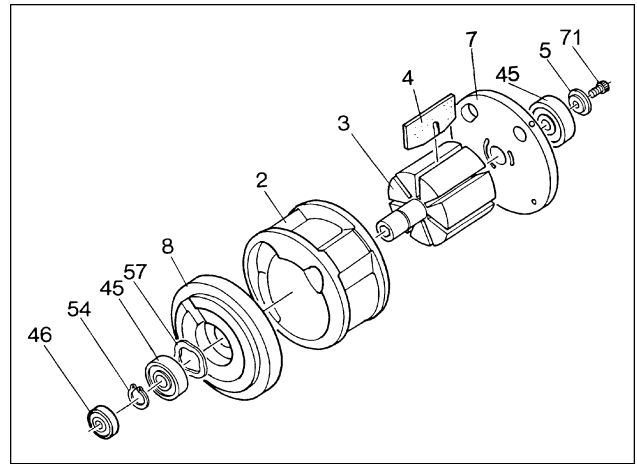


Fig. 8

Brake Section

Remove the rear cover (37, Fig. 9). Pull out the brake bolt (66, Fig. 9) and the brake spring (34, Fig. 9). Pull out the valve shaft (21, Fig. 9) from the brake side.

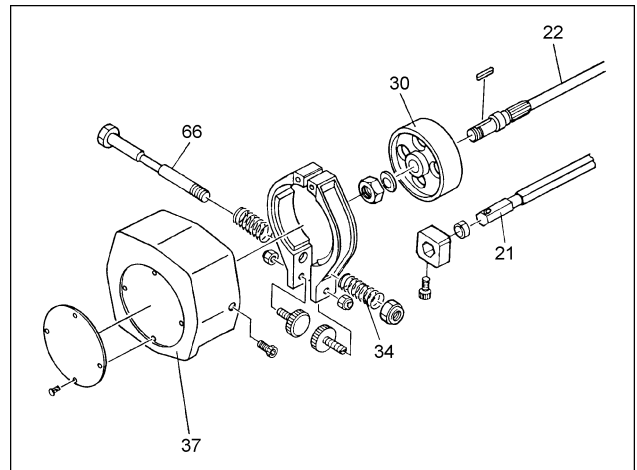


Fig. 9

Reduction Section

Remove the screw (68, Fig. 10) and pull out the casing cover (29, Fig. 10), together with the shaft (22, Fig. 9) and brake wheel (30, Fig. 9). Pull out the planetary gear (23, Fig. 10), internal gear (24, Fig. 10), and the gear disk (25, Fig. 10). Remove the snap ring (56, Fig. 10) and pull out the gear disk (27, Fig. 10). Remove the set bolt (28, Fig. 10) and pull out the internal gear (24, Fig. 10).

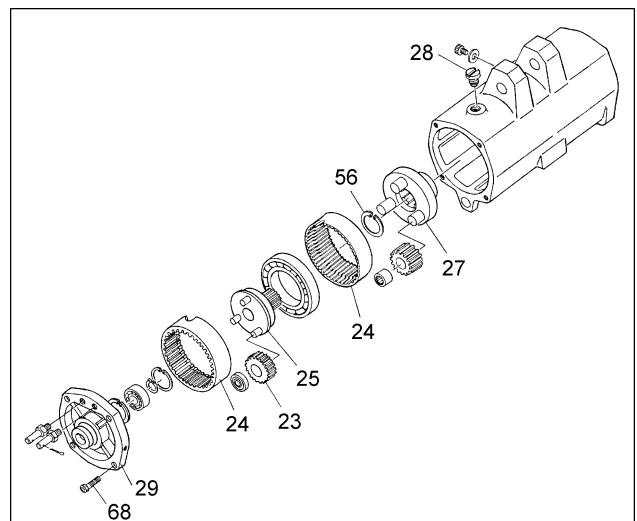


Fig. 10

Drive Chain Wheel

Remove the screw (69, Fig. 11) and pull out the chain guide (40, Fig. 11). Take out the drive chain wheel (39, Fig. 11) from the motor side.

Assembly

Clean and inspect all parts. Replace all damaged and worn parts. Reassemble parts in the reverse order of above. Additional reassembly notes:

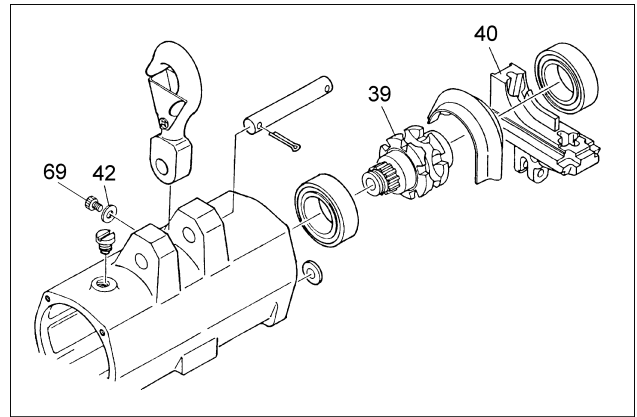


Fig. 11

Drive Chain Wheel

When the drive chain wheel (39, Fig. 12) is assembled, set the ball bearing (44, Fig. 12) on the reduction side of the casing (1, Fig. 12) first, then put chain guide (41, Fig. 12) on next.

Brake Section

See "Brake Adjustment" on page 10 for information on properly adjusting the brake assembly.

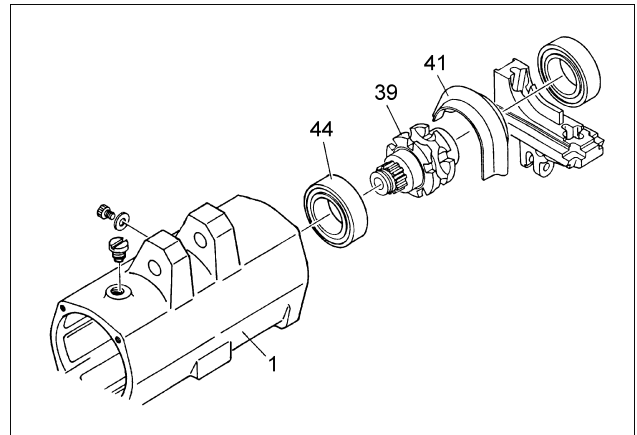


Fig. 12

Replacing Load Chain (Figure 13)

Fasten a length of wire to the end of the load chain. Thread the wire into the hoist from the lifting side through the chain guide and operate the hoist to pull the wire through the hoist and out of the lowering chain guide.

WARNING

Use extreme caution when operating hoist. Keep hands and clothing away from the wire and chain while in motion. Be prepared to stop hoist, or quickly reverse direction. Operate the hoist as slowly as possible. Reduce the air supply pressure if necessary to reduce speed. Failure to comply may cause serious injury!

Carefully check that the chain welds are all facing away from the hoist and no twist is present. Also note that the end link must be parallel to the valve shaft.

Maintain tension in the wire and operate the hoist in the lowering direction until the end of the link is entering the pocket of the drive chain wheel then operate the hoist in the raising direction.

After the chain comes out of the chain guide pass it through the valve lever and attach it to the casing. If the chain must be twisted to be attached, it must be pulled back out of the hoist and reinstalled properly.

Lower Hook Assembly

(Model AH-100C only)

When installing the chain through the lower hook be sure that all twist has been removed from the chain. The welds on every link must face in exactly the same direction the full length of the chain.

If the end link is not parallel to the valve shaft, it must be removed to allow the parallel link to be used.

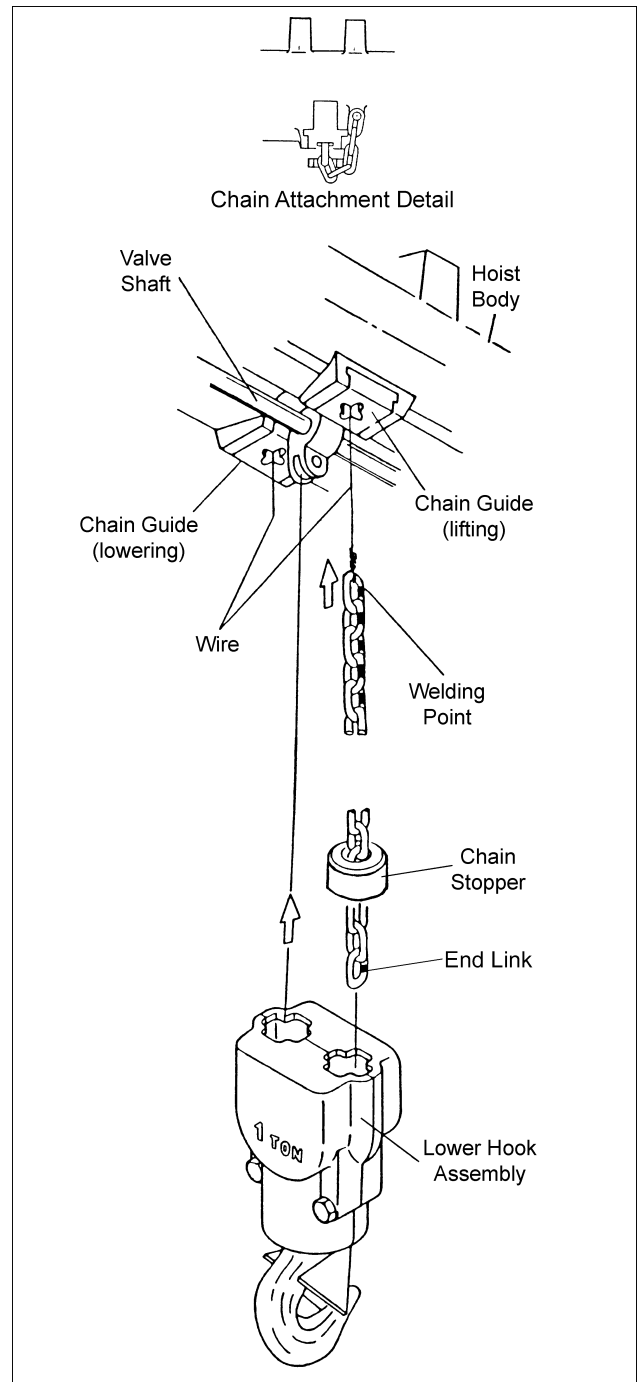
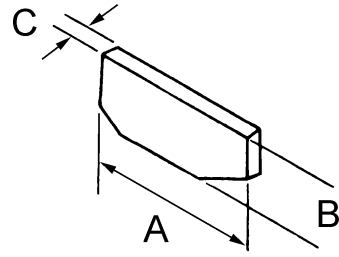


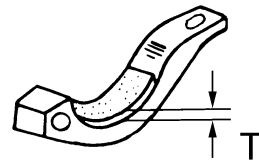
Fig. 13

Allowable Wear Limits

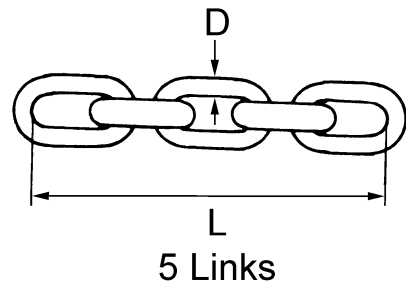
Part	Measurement	New	Replace
Vane	A	1.97"	1.95"
	B	0.78"	0.67"
	C	0.125"	0.109"



Part	Measurement	New	Replace
Brake Shoe	T	0.156"	0.094"



Part	Measurement	New	Replace
Link Chain	D	0.25"	0.23"
	L	3.73"	3.89"



Part

Drive & Idle Chain Wheel: Replace if worn, cracked, or scratched.



Ordering Replacement Parts

JET Equipment & Tools is committed to supporting your new JET Hoist. Through a nationwide network of Repair Stations, you may be assured of a supply of replacement parts and technical service. Use the following procedure to order spare parts.

1. Copy the stock, model and serial numbers from the nameplate of your hoist.
2. Find the parts list section for your hoist.
3. With your old part nearby, look at the illustration and pick out the part you need. Each part has an "index number." Note the index number on the illustration and find the same index number in the parts list.
4. Read the entire line that corresponds to your index number. The part description should somewhat match what the part looks like. If it does not you may have selected the incorrect index number. Recheck the illustration to confirm you have the desired item.

Note: Always check the hoist nameplate prior to using the parts list.

You must order parts using the part number of your part and the model number of your hoist. Using any other number may delay, or prevent identifying the correct part.

Order only JET Replacement parts for your hoist. Substituting other parts, even if listed for a higher rated hoist may not fit, or may compromise the safety of your hoist.

To order replacement parts call 1-800-274-6848, or fax to 1-800-274-6840.

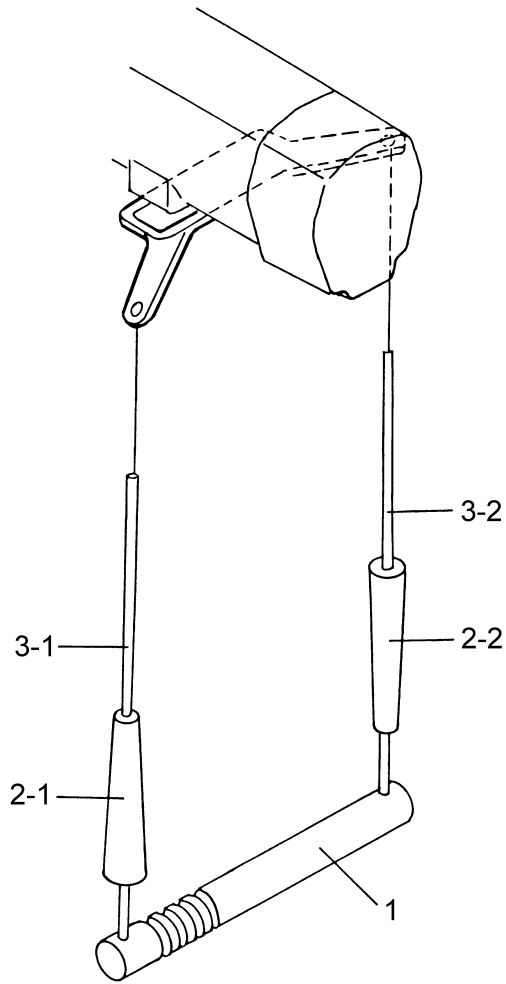
Record your purchase and installation information here.	
Purchased from:	Date:
Stock Number:	Model Number:
Serial Number:	
Installed at:	Installer:
Date Installed:	Date in Service:

Parts List for AH-25C, AH-50C, AH-100C

Index No.	Part No.	Description	Size	Qty.
1	AH25C-001	Casing		1
2	AH25C-002	Rotor Casing		1
3	13343940350	Rotor (w/ shaft)		1
4	AH25C-004	Vane		7
5	1334781550	Rotor Thrust Washer		1
7	AH25C-007	Side Plate (V)		1
8	AH25C-008	Side Plate (S)		1
9	AH25C-009	Valve Casing		1
	AH25C-009CP	Valve Casing Assembly		1
10	AH25C-010	Control Valve		1
11	AH25C-011	Valve Sleeve		1
12	AH25C-012	Valve Spring		2
13	AH25C-013	Spring Cap		2
14	AH25C-014	Valve Arm		1
15	AH25C-015	Valve Cover		3
16	AH25C-106	Valve Cover Packing		3
17	AH25C-017	Valve Cover Packing		1
18	AH25C-018	Muffler		1
19	AH25C-019	Muffler Packing		1
20	AH25C-020	Valve Lever		1
21	AH25C-021	Valve Shaft		1
22	AH25C-022	Shaft		1
23	AH25C-023	Planetary Gear (1)		3
24	AH25C-024	Internal Gear		2
25	AH25C-025	Gear Disk (1)		1
26	AH25C-026	Planetary Gear (2)		3
27	AH25C-027	Gear Disk (2)		1
28	AH25C-028	Set Bolt		1
29	AH25C-029	Casing Cover		1
30	AH25C-030	Brake Wheel		1
31	AH25C-031	Key	4x4x16.5	1
32	AH25C-032	Brake Cam		1
33	AH25C-033	Brake Shoe		2
34	AH25C-034	Brake Spring		2
35	AH25C-035	Brake Shoe Pin		2
36	AH25C-036	Brake Adjuster		2
37	AH25C-037	Rear Cover		1
38	AH25C-038	Name Plate		1
39	AH25C-039	Chain Wheel		1
40	AH25C-040	Chain Guide (A)		1
41	AH25C-041	Chain Guide (B)		1
42	AH25C-042	Washer		1
43	AH25C-043	Hanger Pin		1
44	BB-6008UU	Ball Bearing	6008UU	2
45	BB-6202ZZ	Ball Bearing	6202ZZ	2
46	BB-608UU	Ball Bearing	608UU	1
47	BB-6002	Ball Bearing	6002	1
48	BB-6912	Ball Bearing	6912	1
49	BB-608	Ball Bearing	608	3
50	BB-HK1516	Needle Bearing	HK1516	3
51	AH25C-051	Oil Seal	SC17327	1
52	AH25C-052	Oil Seal	VC10255	1

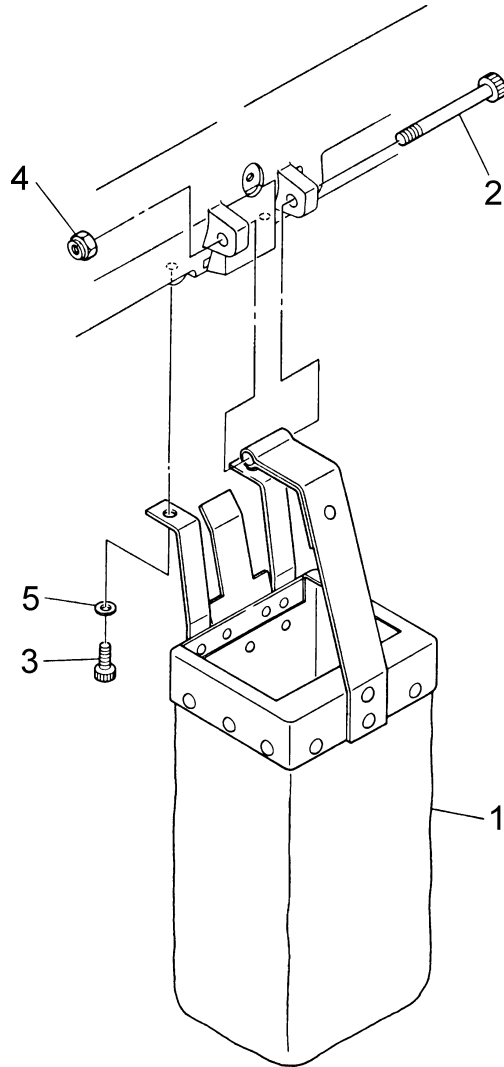
Index No.	Part No.	Description	Size	Qty.
53	AH25C-053	O-Ring	S25	4
54	AH25C-054	Snap Ring	S-15	2
55	AH25C-055	Snap Ring	R-32	2
56	AH25C-056	Snap Ring	S-22	1
57	AH25C-057	Wavy Washer	BWW-6202	1
58	AH25C-058	Split Pin	5x25	2
59	AH25C-059	Split Pin	2x15	2
60	AH25C-060	Spring Pin	4x30	1
61	AH25C-061	Sleeve	R-AR1010	2
62	AH25C-062	Hex Head Nut	M12	1
63	AH25C-063	U-Nut	M10	1
64	AH25C-064	U-Nut	M6	2
65	AH25C-065	Lock Washer	M12	1
66	AH25C-066	Brake Bolt		1
67	AH25C-067	Hex Cap Screw	M10x140	4
68	AH25C-068	Hex Cap Screw	M6x60	4
69	AH25C-069	Hex Cap Screw	M6x20	1
70	AH25C-070	Hex Cap Screw	M6x10	15
71	AH25C-071	Hex Cap Screw	M5x15	6
72	AH25C-072	Packing	PK-M5	2
73	AH25C-073	Top Hook Assembly		1
74	AH25C-402	Safety Latch Assembly		1
	AH25C-WT	Chain Warning Tag (not shown)		

Pull Cord Breakdown & Parts List
(All Models)



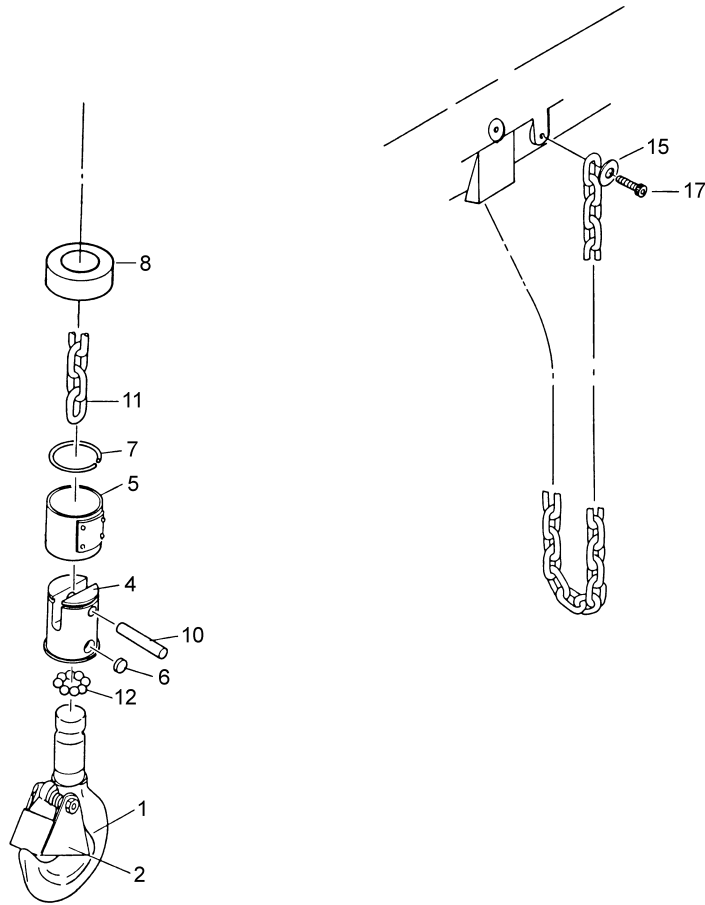
Index No.	Part No.	Description	Size	Qty.
1	AH25C-201	Control Arm		1
2-1	AH25C-202A	Control Handle (red)		1
2-2	AH25C-202B	Control Handle (green)		1
3-1	Local Purchase	Nylon Rope (red)	1/4"	1
3-2	Local Purchase	Nylon Rope (green)	1/4"	1

Chain Bucket Breakdown & Parts List (All Models)



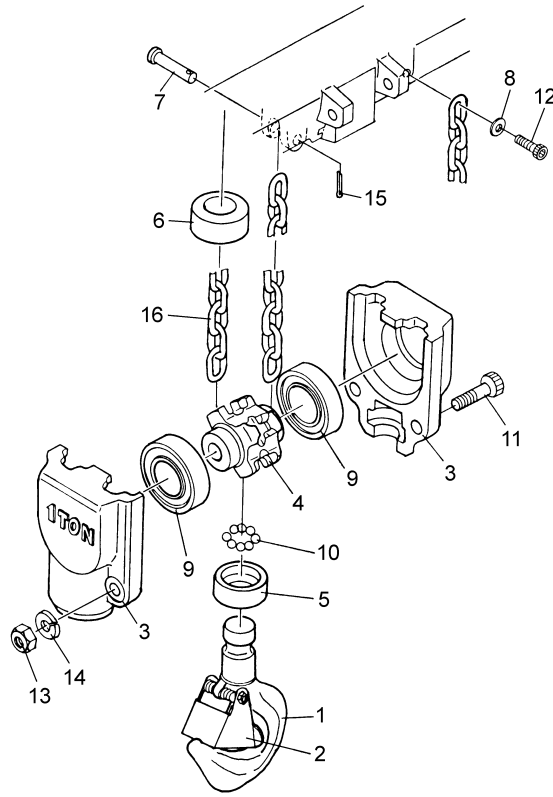
Index No.	Part No.	Description	Size	Qty.
1	105901	Chain Bucket for all models w/10' lift		1
	105902	Chain Bucket for AH-25C/50C to 39' lift. AH-100C to 19' lift		
	105903	Chain Bucket for AH-25C/50C to 65' lift. AH-100C to 32' lift		
2	AH25C-302	Socket Head Screw	M8x70	1
3	AH25C-303	Socket Head Screw	M6x16	2
4	AH25C-304	U-Nut	M8	1
5	AH25C-305	Spring Washer	M6	2

Lower Hook Breakdown & Parts List AH-25C/50C



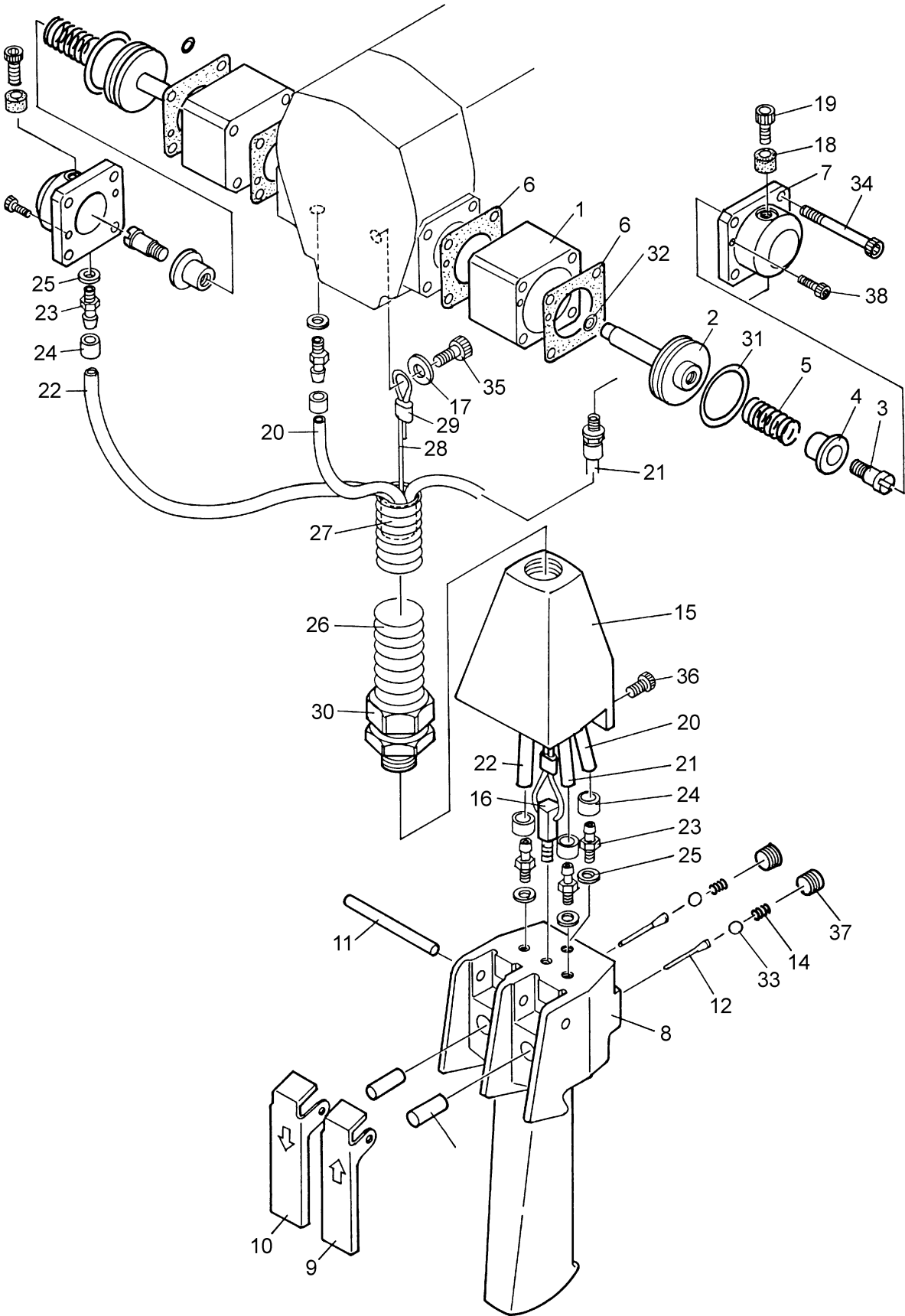
Index No.	Part No.	Description	Size	Qty.
1	AH25C-401	Lower Hook Assembly		1
2	AH25C-402	Safety Latch Assembly		1
4	AH25C-404	Hook Holder		1
5	AH25C-405	Hook Holder Sleeve		1
6	AH25C-406	Plug Disk		1
7	AH25C-407	Locking Ring (B)		1
8	AH25C-408	Chain Stopper		1
10	AH25C-410	Hook Holder Pin		1
11	100097	Link Chain	6.3mm x 19P	1
12	SB-5/16	Steel Ball	5/16"	8
15	AH25C-117	Washer		1
17	AH25C-303	Socket Head Screw	M6x16	1

Lower Hook Breakdown & Parts List AH-100C



Index No.	Part No.	Description	Size	Qty.
1	AH100C-001	Lower Hook Assembly		1
2	AH25C-402	Safety Latch Assembly		1
3	AH100C-003	Hook Case		1
4	AH100C-004	Idle Chain Wheel		1
5	AH100C-005	Hook Ring		1
6	AH100C-006	Chain Stopper		1
7	AH100C-007	Chain Hanger Pin		1
8	AH100C-008	Washer		1
9	BB-6006ZZ	Ball Bearing	6006ZZ	2
10	SB-5/16	Steel Ball	5/16"	8
11	AH100C-011	Socket Head Screw	M10x40	2
12	AH25C-303	Socket Head Screw	M6x16	1
13	AH100C-013	Hex Nut	M10	2
14	AH100C-014	Spring Washer	M10	2
15	AH100C-015	Split Pin	2.5x16	1
16	100097	Link Chain	6.3mm x 19P	1

Pendant Control Breakdown (All AHP Models)



Pendant Control Parts List
(All AHP Models)

Index No.	Part No.	Description	Size	Qty.
1	AH25C-101	Cylinder		2
2	AH25C-102N	Piston 13344891140		2
3	AH25C-103	Set Bolt		2
4	AH25C-104N	Spacer 13344921610		2
5	AH25C-105N	Spring 13344921630		2
6	AH25C-106	Packing		2
7	AH25C-107N	Cylinder Cover 13344990090		2
8	AH25C-108N	Pendant Handle 1334489134B		2
9	AH25C-109	Lever Up		1
10	AH25C-110	Lever Down		1
11	AH25C-111	Lever Pin		1
12	AH25C-112N	Pendant Spool 13314780700		2
13	AH25C-113N	Push Pin 13344911780		2
14	AH25C-114N	Pendant Spring 13344930490		1
15	AH25C-115	Handle Cover		1
16	AH25C-116	Pendant Eye Bolt		1
17	AH25C-117	Washer		1
18	AH25C-118	Silencer		2
19	AH25C-119	Silencer Bolt		2
20	AH25C-120	Tube (yellow)	5/32"x7'	1
	AH25C-120ROLL	Tube (yellow)	sold by the foot	
21	AH25C-121	Tube (red)	5/32"x7'	1
	AH25C-121ROLL	Tube (red)	sold by the foot	
22	AH25C-122	Tube (green)	5/32"x7'	1
	AH25C-122ROLL	Tube (green)	sold by the foot	
23	AH25C-123	Tube Nipple	BN-6x4-M5	6
24	AH25C-124	Sleeve	BS-06	6
25	AH25C-125	Packing	PK-M5	6
26	AH25C-126	Protection Hose		1
27	AH25C-127	Protection Collar		1
28	AH25C-128	Wire		1
29	AH25C-129	Wire Lock		2
30	AH25C-130	Connector		1
31	AH25C-131	Mini Friction (O-Ring)	P34	2
32	AH25C-132	Mini Friction (O-Ring)	P8	2
33	SB-5/32	Steel Ball	5/32	2
34	AH25C-134	Hex Cap Screw	M5x60	8
35	AH25C-135	Hex Cap Screw	M6x20	1
36	AH25C-136	Hex Cap Screw	M5x12	2
37	AH25C-137	Hex Socket Plug		2
38	AH25C-138	Hex Cap Screw	M3x15	4



TEST CERTIFICATE

COMMODITY	Air Hoist
MODEL	AH-25C/50C/ 100C
SERIAL NO.	
CAPACITY	
TEST LOAD	
DATE OF INSPECTION	
JUDGEMENT	PASSED
INSPECTOR	

Compliance: OSHA & ANSI/ASME B30.16 and HST-5 Standards

JET EQUIPMENT & TOOLS, INC.
A WMH Company
www.jettools.com

P.O. BOX 1349
Auburn, WA 98071-1349

Phone: 253-351-6000
Fax: 1-800-274-6840