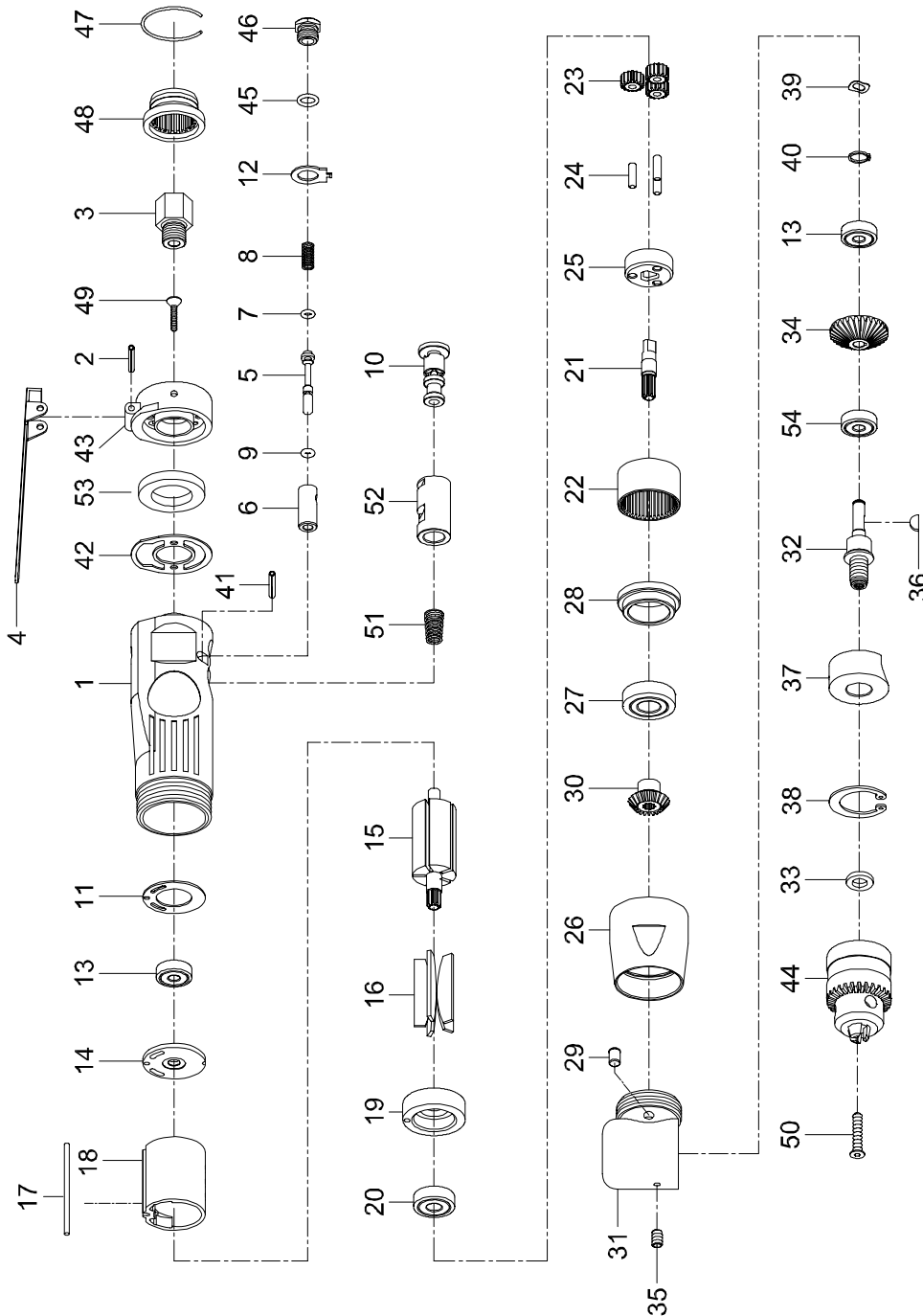




Parts List for JSM-709R, 3/8-inch Reversible Angle Drill



(parts list on reverse side)

WALTER MEIER (Manufacturing) Inc.
427 New Sanford Road
LaVergne, Tennessee 37086
Ph.: 800-274-6848
www.waltermeier.com

Part No. M-JSM-709R
Revision B 06/2010
Copyright © 2010 Walter Meier (Manufacturing) Inc.

Parts List for JSM-709R

To order parts or reach our service department, call 1-800-274-6848 Monday through Friday (see our website for business hours, ww.waltermeier.com). Having the Model Number and Serial Number of your product available when you call will allow us to serve you quickly and accurately.

Index	Part No.	Description	Qty
1	SM-84201	Motor Housing	1
2	SM-30102	Spring Pin, Ø3 x 24L	1
3	51203	Air Inlet	1
4	SM-84204	Throttle Lever	1
5	SM-84205	Valve Stem	1
6	SM-84206	Valve	1
7	SM-70907R	O-Ring, Ø3.9 x ø1.9	1
8	SM-70908R	Spring	1
9	SM-70909R	O-Ring, Ø2 x ø1.5	1
10	SM-84210	Reverse Lever	1
11	80211	Motor Gasket	1
12	SM-84212	Reverse Retainer	1
13	BB-626ZZ	Ball Bearing, 626ZZ	3
14	80214	End Plate	1
15	SM-70915R	Rotor	1
16	80216	Rotor Vane	5
17	80217-13	Spring Pin, Ø2.5 x 55L	1
18	80218-22	Cylinder	1
19	SM-70919R	Front End Plate	1
20	BB-608ZZ	Ball Bearing, 608ZZ	1
21	SM-70921R	Shaft	1
22	SM-70922R	Internal Gear	1
23	SM-30123	Planet Gear	3
24	30124	Pin, Ø4 x 13.8L	3
25	70925R	Cage	1
26	SM-70926R	Lock Ring	1
27	BB-6001VV	Ball Bearing, 6001VV	1
28	SM-70928R	Spacer	1

Index	Part No.	Description	Qty
29	56237	Oil Cap, 3/16"	1
30	SM-70930R	Pinion	1
31	SM-70931R	Angle Housing	1
32	SM-70932R	Spindle	1
33	70133	Chuck Spacer	1
34	SM-70934R	Gear	1
35	TS-1521021	Set Screw, M4 x 6L	1
36	SM-70936R	Key	1
37	SM-70937R	Bearing Cap	1
38	SM-70938R	Retainer Ring, RTW-32	1
39	63049	Wave Washer, WW-6	1
40	SM-70940R	Retainer Ring, STW-6	1
41	40337	Spring Pin, Ø3 x 18L	1
42	SM-70942R	Rear Gasket	1
43	SM-84255	Rear Cover	1
44	SM-70535	Keyed Chuck, 3/8"	1
45	40134	O-Ring, P8	1
46	SM-84246	Throttle Valve Plug	1
47	51229	Retainer Ring, ø1.2xØ35	1
48	51206	Exhaust Deflector	1
49	SM-84249	Screw M3 x 15	2
50	SM-70530	Screw, M5 x 25	1
51	SM-84251	Spring	1
52	SM-84252	Reverse Bushing	1
53	SM-51230	Muffler	1
54	BB-607ZZ	Ball Bearing, 607ZZ	1
55	SM-70535K	Chuck Key 3/8" (not shown)	1

RPK-709R Repair Kit (contains index # 8, 9, 16, 45)

RBK-709R Rebuild Kit (contains index # 11, 23, 30, 42)

Specifications

Stock Number.....	JSM-709R
Chuck Size (in.)	3/8
Spindle Thread (in./TPI).....	3/8-24
Horsepower	1/2
Free Speed (RPM)	1,900
Air Pressure (PSI).....	90
Air Consumption (CFM)	4
Air Inlet (NPT/in.).....	1/4
Air Hose (ID/in.).....	3/8
Vibration Value (m/s ²)	2.6
Overall Length (in.)	8-1/4
Shipping Weight (lbs.).....	5

The above specifications were current at time of publication, but because of our policy of continuous improvement, Walter Meier (Manufacturing) Inc. reserves the right to change specifications at any time and without prior notice, without incurring obligations.