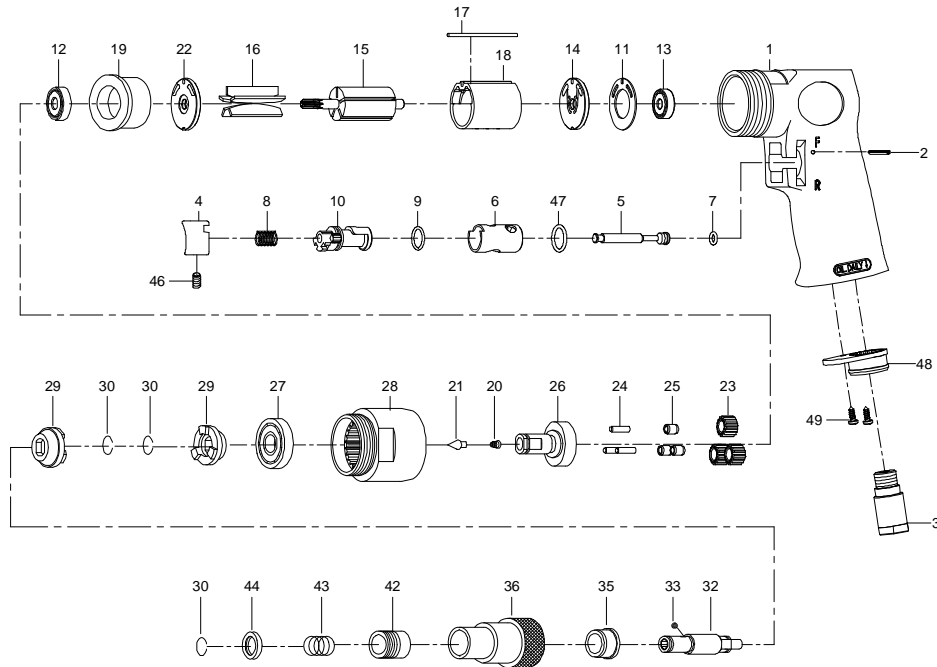




Parts List for JSM-804, 1/4-inch Air Screwdriver



| Index | Part No. | Description | Qty. |
|-------|----------|------------------------|------|
| 1 | 80201 | Motor Housing | 1 |
| 2 | 80202 | Spring Pin, Ø2.5 x 24L | 1 |
| 3 | 70103 | Air Inlet | 1 |
| 4 | 70104 | Trigger | 1 |
| 5 | 80205 | Valve Stem | 1 |
| 6 | 80206 | Reverse Bushing | 1 |
| 7 | 70107 | O-Ring, Ø4.8 x ø1.9 | 1 |
| 8 | 70108 | Valve Spring | 1 |
| 9 | 80209 | O-Ring, Ø12 x ø1.6 | 1 |
| 10 | 80210 | Reverse Lever | 1 |
| 11 | 80211 | Motor Gasket | 1 |
| 12 | BB-608ZZ | Ball Bearing, 608ZZ | 1 |
| 13 | BB-626ZZ | Ball Bearing, 626ZZ | 1 |
| 14 | 80214 | End Plate | 1 |
| 15 | 80415 | Rotor | 1 |
| 16 | 80216 | Rotor Vane | 5 |
| 17 | 80217-13 | Spring Pin, Ø2.5 x 55L | 1 |
| 18 | 80218-22 | Cylinder | 1 |
| 19 | 80419 | Front End Plate | 1 |
| 20 | 80220 | Spring | 1 |
| 21 | 80221 | Spring Guide | 1 |
| 22 | 80414 | End Plate | 1 |

| Index | Part No. | Description | Qty. |
|-------|----------|---------------------|------|
| 23 | 80223 | Planet Gear | 3 |
| 24 | 30124 | Pin, Ø4 x 13.8L | 3 |
| 25 | 80225 | Bushing | 3 |
| 26 | 80426 | Work Spindle | 1 |
| 27 | BB-6201Z | Ball Bearing, 6201Z | 1 |
| 28 | 80428 | Clamp Nut | 1 |
| 29 | 80429 | Drive Dog | 2 |
| 30 | 80230 | Retaining Ring | 3 |
| 32 | 80432 | Cam Spindle | 1 |
| 33 | SB-1/8 | Steel Ball, 1/8" | 1 |
| 35 | 80435 | Clutch Bushing | 1 |
| 36 | 80436 | Clutch Housing | 1 |
| 42 | 80242 | Ball Retainer | 1 |
| 43 | 80243 | Spring | 1 |
| 44 | 80244 | Washer | 1 |
| 46 | SM-70438 | Set Screw, M4 x 8L | 1 |
| 47 | 80247 | O-Ring, Ø13.8 x ø2 | 1 |
| 48 | 70110 | Exhaust Diffuser | 1 |
| 49 | 40309 | Screw, TS2.9 | 2 |

RPK-804.....Repair Kit (contains index # 7, 9, 16, 33, 46, 47)
 RBK-804.....Rebuild Kit (contains index # 11, 18, 21, 23, 25)

JET
 427 New Sanford Road
 LaVergne, Tennessee 37086
 Ph.: 800-274-6848
 www.jettools.com

Part No. M-JSM-804
 Revision B1 07/2014
 Copyright © 2014 JET, a Division of JPW Industries, Inc.

Replacement Parts

To order parts or reach our service department, call 1-800-274-6848 Monday through Friday (see our website for business hours, www.jettools.com). Having the Model Number and Serial Number of your product available when you call will allow us to serve you quickly and accurately.

Specifications

| | |
|---|-----------------|
| Stock Number | JSM-804 |
| Chuck Type | Positive Clutch |
| Chuck Size (in.) | 1/4 |
| Horsepower | 1/2 |
| Free Speed (RPM) | 1,800 |
| Torque (in./lbs.) | 115 |
| Air Pressure (PSI) | 90 |
| Air Consumption (CFM) | 4 |
| Air Inlet (NPT/in.) | 1/4 |
| Air Hose (ID/in.) | 3/8 |
| Vibration Value (m/s ²) | 0.6 |
| Overall Length (in.) | 7 |
| Shipping Weight (lbs.) | 4 |

The above specifications were current at time of publication, but because of our policy of continuous improvement, JET reserves the right to change specifications at any time and without prior notice, without incurring obligations.