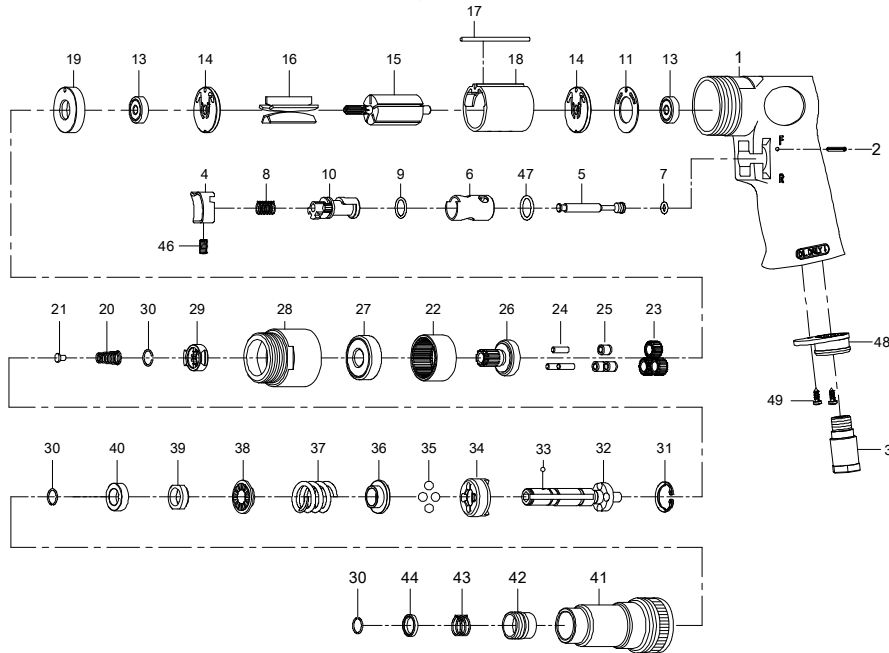




Parts List for JSM-802, 1/4-inch Air Screwdriver



Index	Part No.	Description	Qty.
1	80201	Motor Housing	1
2	80202	Spring Pin, Ø2.5 x 24L	1
3	70103	Air Inlet	1
4	70104	Trigger	1
5	80205	Valve Stem	1
6	80206	Reverse Bushing	1
7	70107	O-Ring, Ø4.8 x ø1.9	1
8	70108	Valve Spring	1
9	80209	O-Ring, Ø12 x ø1.6	1
10	80210	Reverse Lever	1
11	80211	Motor Gasket	1
13	BB-626ZZ	Ball Bearing, 626ZZ	2
14	80214	End Plate	2
15	80215	Rotor	1
16	80216	Rotor Vane	5
17	80217-13	Spring Pin, Ø2.5 x 55L	1
18	80218-22	Cylinder	1
19	80219	Spacer	1
20	80220	Spring	1
21	80221	Spring Guide	1
22	80222	Internal Gear	1
23	80223	Planet Gear	3
24	30124	Pin, Ø4 x 13.8L	3
25	80225	Bushing	3
26	80226	Work Spindle	1

Index	Part No.	Description	Qty.
27	BB-6201Z	Ball Bearing, 6201Z	1
28	80228	Clamp Nut	1
29	80229	Drive Dog	1
30	80230	Retaining Ring	3
31	80231	Snap Ring, RTW-21	1
32	80232	Cam Spindle	1
33	SB-1/8	Steel Ball, 1/8"	1
34	80234	Clutch	1
35	SB-1/4	Steel Ball, 1/4"	4
36	80236	Thrust Washer	1
37	80237	Spring	1
38	80238	Washer	1
39	80239	Adjust Nut	1
40	80240	Spacer	1
41	80241	Clutch Housing	1
42	80242	Ball Retainer	1
43	80243	Spring	1
44	80244	Washer	1
46	SM-70438	Set Screw, M4 x 8L	1
47	80247	O-Ring, Ø13.8 x ø2	1
48	70110NPN	Exhaust Diffuser	1
49	40309	Screw, TS2.9	2

RPK-802.....Repair Kit (contains index # 7, 9, 16, 46, 47)

RBK-802.....Rebuild Kit (contains index # 11, 18, 21, 23, 25)

JET

427 New Sanford Road
LaVergne, Tennessee 37086
Ph.: 800-274-6848
www.jettools.com

Part No. M-JSM-802
Revision B1 07/2014

Copyright © 2014 JET, a Division of JPW Industries, Inc.

Replacement Parts

To order parts or reach our service department, call 1-800-274-6848 Monday through Friday (see our website for business hours, www.jettools.com). Having the Model Number and Serial Number of your product available when you call will allow us to serve you quickly and accurately.

Specifications

Stock Number	JSM-802
Chuck Type	Adjustable Clutch
Chuck Size (in.)	1/4
Horsepower	1/2
Free Speed (RPM)	1,800
Torque (in./lbs.)	45/115
Air Pressure (PSI)	90
Air Consumption (CFM)	4
Air Inlet (NPT/in.)	1/4
Air Hose (ID/in.)	3/8
Vibration Value (m/s ²)	0.6
Overall Length (in.)	7
Shipping Weight (lbs.)	4

The above specifications were current at time of publication, but because of our policy of continuous improvement, JET reserves the right to change specifications at any time and without prior notice, without incurring obligations.