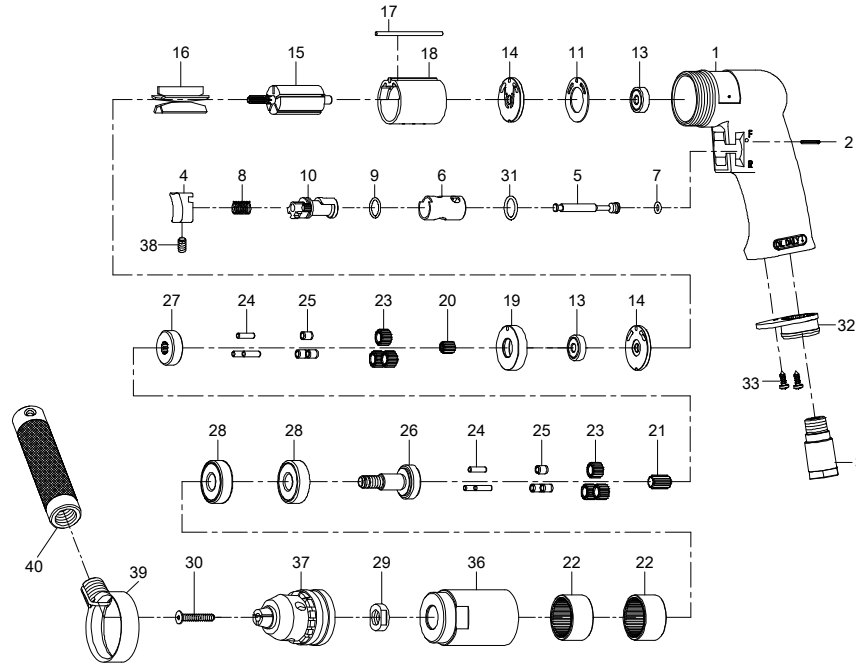




## Parts List for JSM-724, 1/2-inch Reversible Air Drill



Index	Part No.	Description	Qty.
1	SM-72401	Motor Housing	1
2	80202	Spring Pin, Ø2.5 x 24L	1
3	70103	Air Inlet	1
4	70104	Trigger	1
5	80205	Valve Stem	1
6	80206	Reverse Bushing	1
7	70107	O-Ring, Ø4.8 x 1.9	1
8	70108	Spring	1
9	80209	O-Ring, Ø12 x 1.6	1
10	80210	Reverse Lever	1
11	80211	Motor Gasket	1
13	BB-626ZZ	Ball Bearing, 626ZZ	2
14	80214	End Plate	2
15	80215	Rotor	1
16	80216	Rotor Vane	5
17	80217-13	Spring Pin, Ø2.5 x 55L	1
18	80218-22	Cylinder	1
19	80219	Spacer	1
20	JSM-72420	Pinion Gear	1

Index	Part No.	Description	Qty.
21	SM-70421	Center Gear	1
22	80222	Internal Gear	2
23	SM-70423	Planet Gear	6
24	30124	Pin, Ø4 x 13.8L	6
25	SM-70425	Bushing	6
26	SM-70426	Work Spindle	1
27	SM-70427	Reduction Spindle	1
28	BB-6201Z	Ball Bearing, 6201Z	2
29	72529	Chuck Spacer	1
30	SM-70430	Chuck Screw, M5 x 30	1
31	80247	O-Ring, Ø13.8 x 2	1
32	70110NPN	Exhaust Diffuser	1
33	40309	Screw, TS2.9	2
36	SM-70436	Clamp Nut	1
37	SM-70437	Keyed Chuck, 1/2"	1
38	SM-70438	Set Screw, M4 x 8L	1
39	SM-70439	Retainer	1
40	70340	Handle	1
41	SM-70437K	Chuck Key, 1/2" (not shown)	1

RPK-724 ..... Repair Kit (contains index # 7, 9, 16, 31 and 38)

RBK-724 ..... Rebuild Kit (contains index # 11, 18, 20, 23 and 25)

### JET

427 New Sanford Road  
 LaVergne, Tennessee 37086  
 Ph.: 800-274-6848  
 www.jettools.com

**Part No. M-JSM-724**  
 Revision B1 07/2014

Copyright © 2014 JET, a Division of JPW Industries, Inc.

## Replacement Parts

To order parts or reach our service department, call 1-800-274-6848 Monday through Friday (see our website for business hours, [www.jettools.com](http://www.jettools.com)). Having the Model Number and Serial Number of your product available when you call will allow us to serve you quickly and accurately.

## Specifications

Stock Number .....	JSM-724
Chuck Size (in.) .....	1/2
Spindle Thread (in./TPI) .....	3/8-24
Horsepower .....	1/2
Free Speed (RPM) .....	800
Air Pressure (PSI) .....	90
Air Consumption (CFM) .....	4
Air Inlet (NPT/in.) .....	1/4
Air Hose (ID/in.) .....	3/8
Vibration Value (m/s <sup>2</sup> ) .....	2.2
Overall Length (in.) .....	7-1/2
Shipping Weight (lbs.) .....	5

The above specifications were current at time of publication, but because of our policy of continuous improvement, JET reserves the right to change specifications at any time and without prior notice, without incurring obligations.