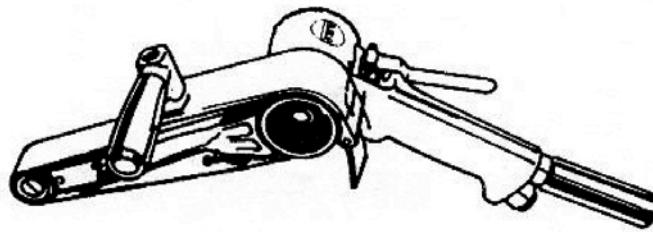


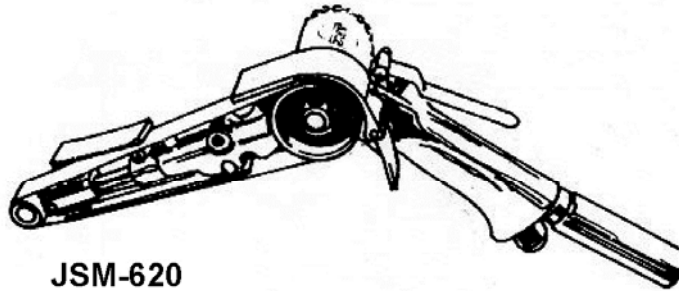


Operating Instructions and Parts Manual Mini Belt Sanders

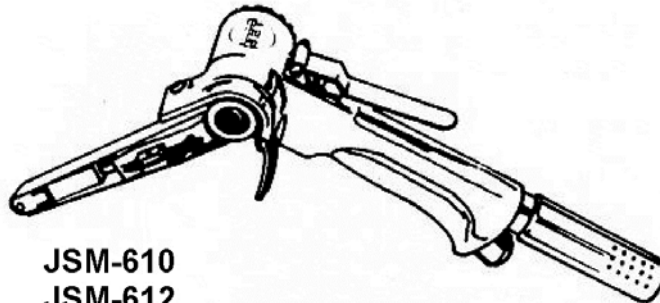
Models JSM-606/610/612/620/630



JSM-630



JSM-620



JSM-610
JSM-612
JSM-606

JET
427 New Sanford Road
LaVergne, Tennessee 37086
Ph.: 800-274-6848
www.jettools.com

Part No. M-JSM-630
Revision G1 07/2014
Copyright © 2014 JET

Warranty and Service

JET® warrants every product it sells against manufacturers' defects. If one of our tools needs service or repair, please contact Technical Service by calling 1-800-274-6846, 8AM to 5PM CST, Monday through Friday.

Warranty Period

The general warranty lasts for the time period specified in the literature included with your product or on the official JET branded website.

- JET products carry a limited warranty which varies in duration based upon the product. (See chart below)
- Accessories carry a limited warranty of one year from the date of receipt.
- Consumable items are defined as expendable parts or accessories expected to become inoperable within a reasonable amount of use and are covered by a 90 day limited warranty against manufacturer's defects.

Who is Covered

This warranty covers only the initial purchaser of the product from the date of delivery.

What is Covered

This warranty covers any defects in workmanship or materials subject to the limitations stated below. This warranty does not cover failures due directly or indirectly to misuse, abuse, negligence or accidents, normal wear-and-tear, improper repair, alterations or lack of maintenance.

Warranty Limitations

Woodworking products with a Five Year Warranty that are used for commercial or industrial purposes default to a Two Year Warranty. Please contact Technical Service at 1-800-274-6846 for further clarification.

How to Get Technical Support

Please contact Technical Service by calling 1-800-274-6846. **Please note that you will be asked to provide proof of initial purchase when calling.** If a product requires further inspection, the Technical Service representative will explain and assist with any additional action needed. JET has Authorized Service Centers located throughout the United States. For the name of an Authorized Service Center in your area call 1-800-274-6846 or use the Service Center Locator on the JET website.

More Information

JET is constantly adding new products. For complete, up-to-date product information, check with your local distributor or visit the JET website.

How State Law Applies

This warranty gives you specific legal rights, subject to applicable state law.

Limitations on This Warranty

JET LIMITS ALL IMPLIED WARRANTIES TO THE PERIOD OF THE LIMITED WARRANTY FOR EACH PRODUCT. EXCEPT AS STATED HEREIN, ANY IMPLIED WARRANTIES OF MERCHANTABILITY AND FITNESS FOR A PARTICULAR PURPOSE ARE EXCLUDED. SOME STATES DO NOT ALLOW LIMITATIONS ON HOW LONG AN IMPLIED WARRANTY LASTS, SO THE ABOVE LIMITATION MAY NOT APPLY TO YOU.

JET SHALL IN NO EVENT BE LIABLE FOR DEATH, INJURIES TO PERSONS OR PROPERTY, OR FOR INCIDENTAL, CONTINGENT, SPECIAL, OR CONSEQUENTIAL DAMAGES ARISING FROM THE USE OF OUR PRODUCTS. SOME STATES DO NOT ALLOW THE EXCLUSION OR LIMITATION OF INCIDENTAL OR CONSEQUENTIAL DAMAGES, SO THE ABOVE LIMITATION OR EXCLUSION MAY NOT APPLY TO YOU.

JET sells through distributors only. The specifications listed in JET printed materials and on official JET website are given as general information and are not binding. JET reserves the right to effect at any time, without prior notice, those alterations to parts, fittings, and accessory equipment which they may deem necessary for any reason whatsoever. JET® branded products are not sold in Canada by JPW Industries, Inc.

Product Listing with Warranty Period

90 Days – Parts; Consumable items; Light-Duty Air Tools
1 Year – Motors; Machine Accessories; Heavy-Duty Air Tools; Pro-Duty Air Tools
2 Year – Metalworking Machinery; Electric Hoists, Electric Hoist Accessories
5 Year – Woodworking Machinery
Limited Lifetime – JET Parallel clamps; VOLT Series Electric Hoists; Manual Hoists; Manual Hoist Accessories; Shop Tools; Warehouse & Dock products; Hand Tools

NOTE: JET is a division of JPW Industries, Inc. References in this document to JET also apply to JPW Industries, Inc., or any of its successors in interest to the JET brand.

Table of contents

Section	Page
Warranty and Service.....	2
Table of contents.....	3
Specifications.....	4
Operating conditions.....	4
Before operation.....	4
Tracking adjustment.....	5
Belt replacement.....	5
Shoe Replacement.....	6
Idle pulley replacement.....	6
Bracket replacement.....	7
Storage.....	7
Speed adjustment.....	7
Replacement Parts.....	7
JSM-606 Mini Belt Sander.....	8
JSM-610 Mini Belt Sander.....	9
JSM-612 Mini Belt Sander.....	10
JSM-620 Mini Belt Sander.....	11
JSM-630 Mini Belt Sander.....	12



Safety warnings

1. Read and understand the entire contents of this manual before attempting operation.
2. Never operate a belt sander without proper eye and face protection.
3. Do not operate sander while wearing gloves, loose clothing, jewelry or anything that may get caught in a rotating belt. Long hair must be contained.
4. Wear ear protectors (plugs or muffs) during extended periods of operation.
5. Do not operate sander over 100 PSI.
6. Do not operate sander without the silencer (muffler) installed.
7. Keep hands and fingers away from sanding belt.
8. Disconnect sander from air source before making repairs, adjustments or belt changes.
9. Some dust created by power sanding, sawing, grinding, drilling and other construction activities contain chemicals known to cause cancer, birth defects or other reproductive harm. Some examples of these chemicals are:
 - Lead from lead based paint.
 - Crystalline silica from bricks, cement and other masonry products.
 - Arsenic and chromium from chemically treated lumber.Your risk of exposure varies, depending on how often you do this type of work. To reduce your exposure to these chemicals, work in a well-ventilated area and work with approved safety equipment, such as face or dust masks that are specifically designed to filter out microscopic particles.
10. Use the right tool at the correct speed and feed rate. Do not force a tool or attachment to do a job for which it was not designed. The right tool will do the job better and more safely.
11. Use recommended accessories; improper accessories may be hazardous.
12. Don't use in dangerous environment. Don't use power tools in damp or wet location, or expose them to rain. Keep work area well lighted.
13. Failure to comply with all of the above warnings may lead to serious injury.

Specifications

Model/Stock number	JSM-606	JSM-610	JSM-612	JSM-620	JSM-630
Repair kit number	RPK-606	RPK-610	RPK-612	RPK-620	RPK-630
Rebuild kit number	RBK-606	RBK-610	RBK-612	RBK-620	RBK-630
Free speed (RPM)	20,000	20,000	20,000	18,000	12,000
Surface feet per minute (SFPM)	4328	4328	4328	9274	6059
Belt size (in.)	1/4" x 13"	3/8" x 13"	1/2" x 24"	3/4" x 20-1/4"	1-3/16" x 21-1/4"
Horsepower (HP)	0.37	0.37	0.37	0.45	0.7
Noise level (dB)	80	80	80	82	79
Air pressure (psi)	90	90	90	90	90
Air consumption (CFM)	14.2	14.2	14.2	18.4	24
Air inlet (NPT/in.)	1/4	1/4	1/4	1/4	1/4
Air hose (I.D./in.)	3/8	3/8	3/8	3/8	3/8
Length folded (in.)	10-7/8"	10-7/8"	12"	11-3/8"	11-5/8"
Maximum length open (in.)	15-3/4"	15-3/4"	21"	19"	19-19/64"
Vibration value (m/s ²)	3.8	3.8	3.8	3.1	3.1
Height (in.)	1-63/64"	1-63/64"	1-63/64"	2-23/64"	4-9/64"
Net weight (lb)	2	2	2	3-1/4	4-1/2
Shipping weight (lb)	3	3	3	4	6

The specifications in this manual were current at time of publication, but because of our policy of continuous improvement, JET, reserves the right to change specifications at any time and without prior notice, without incurring obligations.

Operating conditions

1. Compressor must be able to deliver 14.2 CFM, 70-100 PSI, and be rated at 3HP minimum for models JSM-606/610/612. Models JSM-620/630 require a compressor delivering 18-24 CFM rated at 5HP minimum.
2. Use 3/8" air hose between the compressor and the sander.
3. To avoid moisture damage to the sander, use an inline filter to trap moisture and an inline oiler to keep the sander running at top efficiency. These are placed inline between the compressor and the sander. See Figure 1.

For further information, see "Air Tools – Instruction and Care" enclosed with the sander.

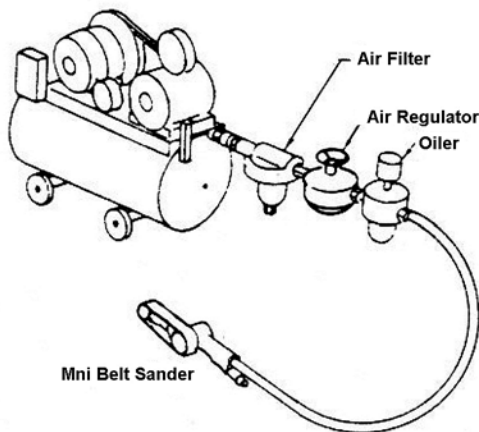


Figure 1

Before operation

WARNING Disconnect sander from air hose before making any repair or adjustment. Failure to comply may cause serious injury.

1. Run compressor and blow out hose before connecting sander to clear line of any contaminants.
2. Before connecting the hose to the sander, add 4 to 5 drops of air tool oil to the air inlet.
3. If an inline oiler is not used, add 4 to 5 drops at the air inlet for every three to four hours of operation.
4. Adjust head to desired angle and tighten hex socket cap screw (A, Figure 2), with hex wrench supplied.

CAUTION Always tighten hex socket cap screw firmly after adjustment, or the head could rotate causing loss of control.

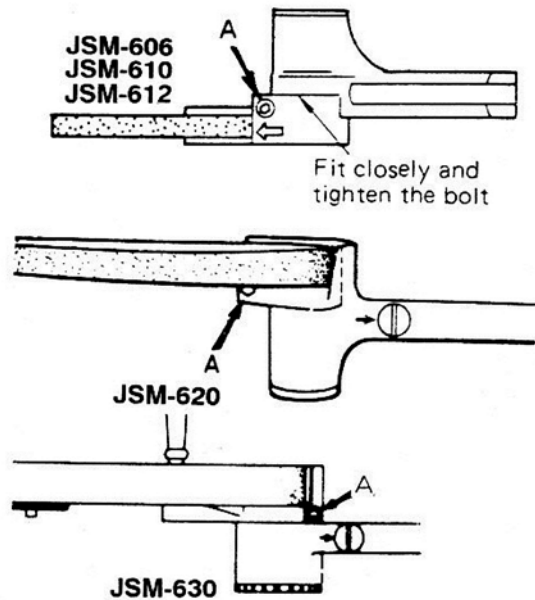


Figure 2

Tracking adjustment

WARNING Tracking adjustment requires the sander to be connected to the hose and running. Use caution when hands and tools are close to a running belt. Failure to comply may cause serious injury.

Belt is tracking properly on all models when centered on the idle pulley.

JSM-606: no adjustment

JSM-610/612:

1. Loosen set screw with wrench. See Figure 3.
2. With belt running, turn adjusting screw clockwise or counterclockwise until it is centered on the idler pulley.
3. Tighten set screw.

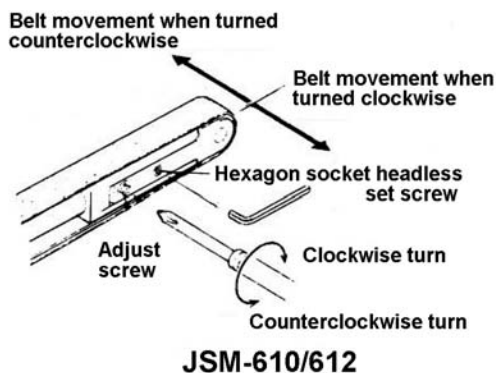


Figure 3

JSM-620/630:

Insert hex wrench into hex socket cap screw and turn clockwise or counterclockwise until belt is centered on idle pulley. See Figure 4.

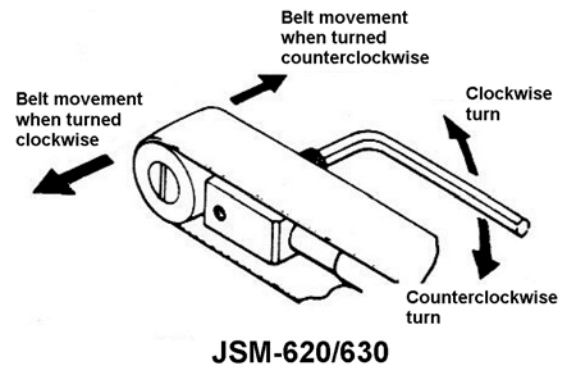


Figure 4

Belt replacement

JSM-606/610:

1. Disconnect sander from air source.
2. Loosen hex cap screw (A, Figure 2), turn head 90-degrees to the handle, and tighten screw to lock. See Figure 5.
3. Steady the sander with one hand while pushing down on the idle wheel assembly with the other until assembly locks in place. See Figure 5.
4. Remove old belt. Install new belt.
5. Press safety lever (A, Figure 5) to tension belt.

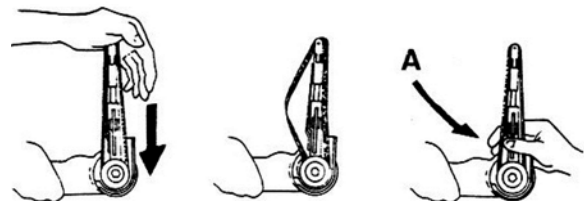


Figure 5

JSM-612:

1. Disconnect sander from air source.
2. Loosen hex cap screw (A, Figure 2), turn head 90-degrees to the handle, and tighten screw to lock. See Figure 6.
3. Steady sander with one hand while pushing down on the idle pulley assembly and removing belt with the other.
4. Install new belt over idle pulley.
5. Push idle pulley assembly down and place belt on drive pulley. See sequence in Figure 6.

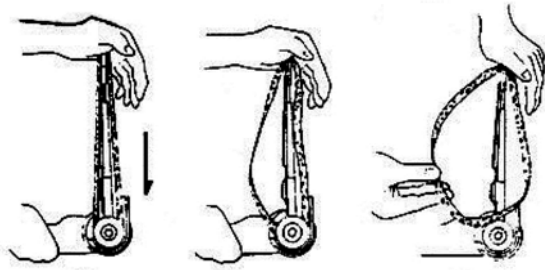


Figure 6

JSM-620/630:

1. Disconnect sander from air source.
2. Loosen hex cap screw (A, Figure 2), turn head 90-degrees to the handle, and tighten screw to lock.
3. Grab handle with the left hand. Push down on the idle pulley assembly and turn 1/8 of a full turn clockwise to lock in place. See sequence in Figure 7.
4. Remove old belt. Install new belt.
5. Push down and turn idle pulley assembly counterclockwise to tension belt.

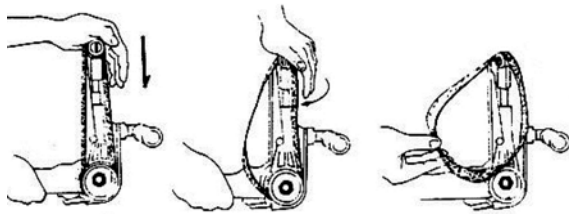


Figure 7

Shoe Replacement

The shoe or sanding platen should be replaced when, due to wear, it no longer sits flat but is convex in shape.

JSM-606/610/612:

1. Disconnect sander from air source.
2. Remove belt (see section titled "Belt Replacement").
3. Remove screw(s) and remove old shoe.
4. Install new shoe and fasten with screw(s). Make sure insert on shoe end engages slot on sander body.

JSM-620:

1. Disconnect sander from air source.
2. Remove belt (see section titled "Belt Replacement").
3. Loosen hex socket cap screw (A, Figure 8).
4. Remove old shoe. Replace with new shoe.
5. Tighten screw (A) and replace belt.

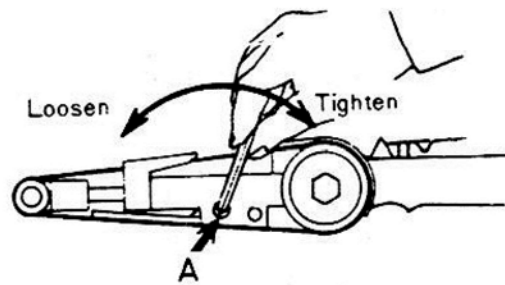


Figure 8

JSM-630:

1. Disconnect sander from air source.
2. Remove belt (see section titled "Belt Replacement").
3. Turn shoe holder (A, Figure 9) a quarter of a turn with screwdriver to release shoe.
4. Insert new shoe and turn shoe holder to lock new shoe. Replace belt.

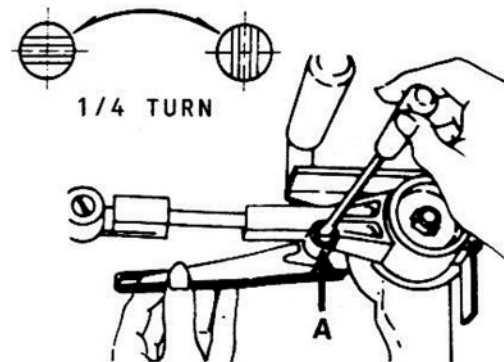
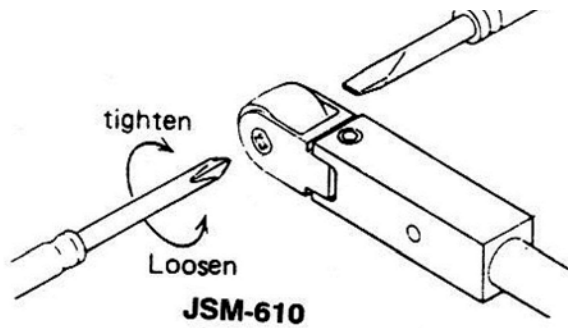


Figure 9

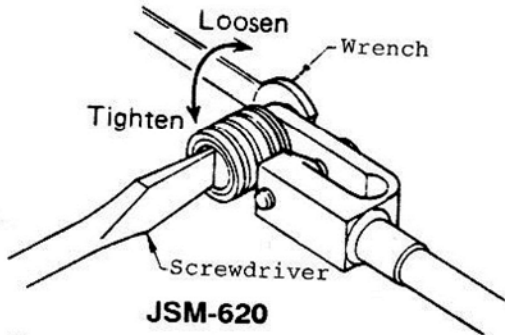
Idle pulley replacement

WARNING Disconnect sander from air hose before making any repair or adjustment. Failure to comply may cause serious injury.

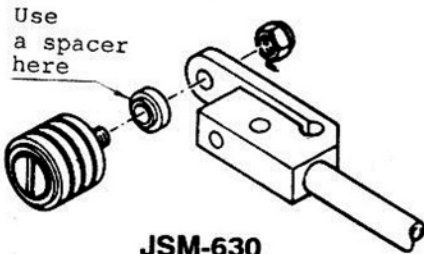
Follow diagram in Figure 10 for your sander model when replacing the idle pulley.



JSM-610



JSM-620



JSM-630

Figure 10

Bracket replacement

JSM-606/610/612

1. Disconnect sander from air source.
2. Remove belt.
3. Pull out bracket in direction labeled A, Figure 11. Be careful not to lose spring.

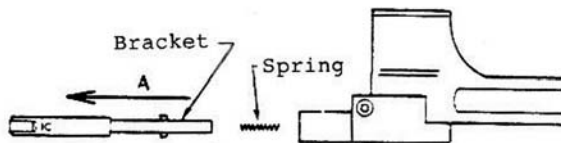


Figure 11

4. Insert new bracket by lining up pin with pin groove. See Figure 12.

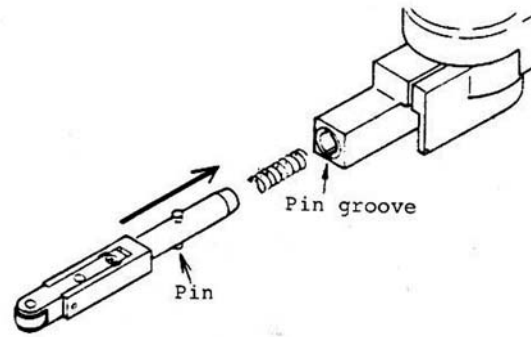


Figure 12

Storage

1. Avoid storing sander in locations with high humidity.
2. Before storing, apply four to five drops of air tool oil at the air inlet and run for a short time.

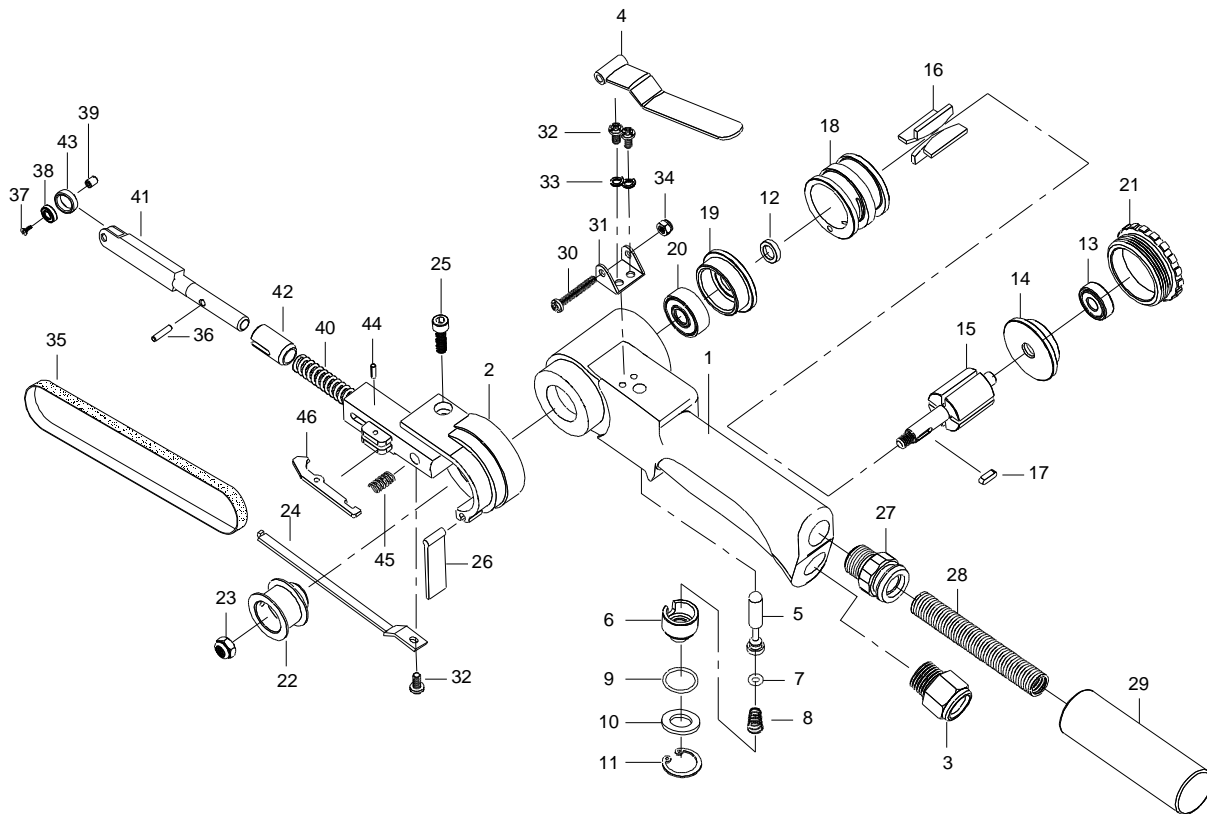
Speed adjustment

All models have a brass screw used for belt speed adjustment found on the underside of the handle. This has been set at the factory. It is highly recommended that the end user **not** attempt any adjustment to the speed control.

Replacement Parts

Replacement parts are listed on the following pages. To order parts or reach our service department, call 1-800-274-6848 Monday through Friday (see our website for business hours, www.jettools.com). Having the Model Number and Serial Number of your machine available when you call will allow us to serve you quickly and accurately.

JSM-606 Mini Belt Sander

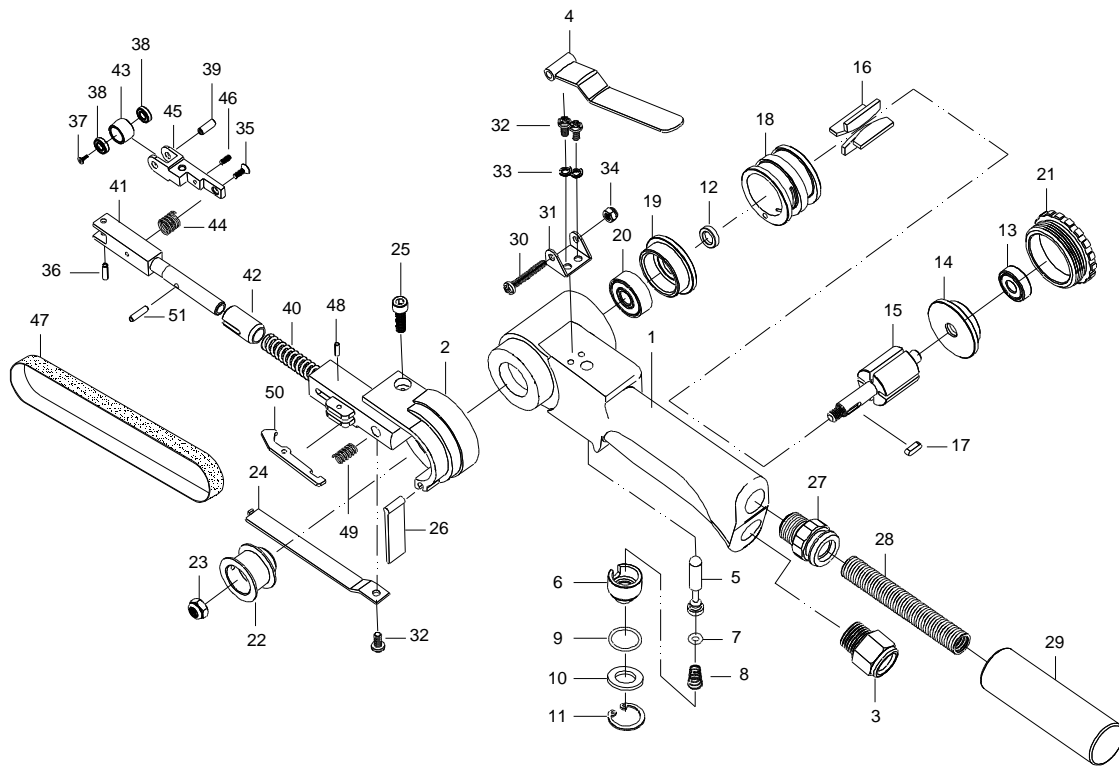


Index	Part No.	Description	Qty.
1	60601NPN	Housing	1
2	60602NPN	Guard Subassembly (w/60626)	1
3	60603NPN	Air Inlet	1
4	60604NPN	Lever	1
5	60605NPN	Valve Stem	1
6	60606NPN	Adjust Valve	1
7	60607NPN	O-Ring	1
8	60608NPN	Spring	1
9	60609NPN	O-Ring	1
10	60610NPN	Spacer	1
11	60611NPN	Retaining Ring	1
12	60612NPN	Spacer	1
13	BB-607ZZ	Ball Bearing	1
14	60614NPN	Rear End Plate	1
15	60615NPN	Rotor	1
16	60616NPN	Vane	4
17	60617NPN	Sunk Key	1
18	60618NPN	Cylinder	1
19	60619NPN	Front End Plate	1
20	BB-628ZZ	Ball Bearing	1
21	60621NPN	Cap	1
22	60622NPN	Drive Pulley	1
23	60623NPN	Hexagon Nut	1

Index	Part No.	Description	Qty.
24	60624NPN	Shoe	1
25	60625NPN	Hexagon Socket Head Bolt	1
26	60626NPN	Dust Cover	1
27	60627NPN	Nipple	1
28	60628NPN	Spring	1
29	62029NPN	Silencer	1
30	60630NPN	Cross-Recessed Pan Hd Mach Screw	1
31	60631NPN	Lever Support	1
32	60632NPN	Cross-Recessed Pan Hd Mach Screw	3
33	60633NPN	Spring Washer	2
34	60634NPN	Hexagon Nut	1
35	60635NPN	Grinding Belt	1
36	60636NPN	Lock Pin	1
37	60637NPN	Cross-Recessed Flat Hd Mach Screw	1
38	BB-684ZZ	Ball Bearing	1
39	60639NPN	Idle Pulley Shaft	1
40	60640NPN	Spring	1
41	60641NPN	Tension Bar	1
42	60642NPN	Bushing	1
43	60643NPN	Idle Pulley	1
44	60644NPN	Spring Pin ϕ 2.5x8L	1
45	60645NPN	Spring	1
46	60646NPN	Safety Lever	1

RPK-606 Repair Kit (contains #7,9,11,16,26)
 RBK-606 Rebuild Kit (contains #37,38,39,41,43)

JSM-610 Mini Belt Sander



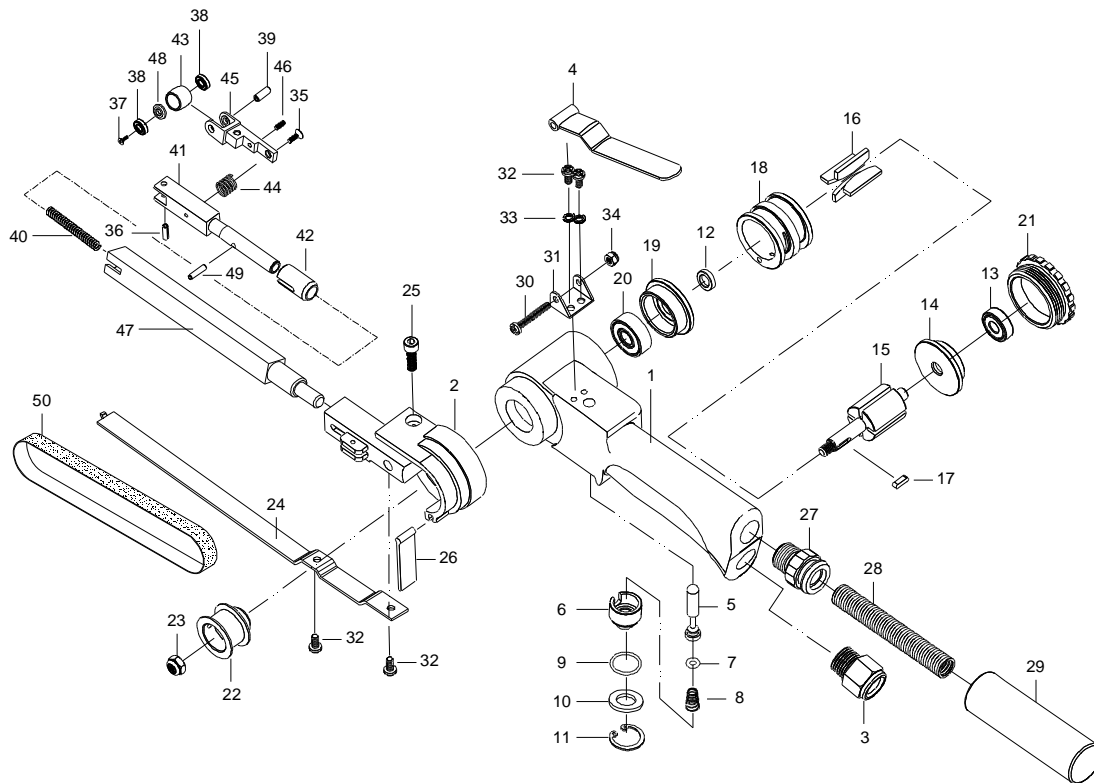
Index	Part No.	Description	Qty.
1	61001	Housing	1
2	61002	Guard Body	1
	61002A	Guard Subassembly (w/61026)	
3	61003	Air Inlet	1
4	61004	Lever	1
5	61005	Valve Stem	1
6	61006	Adjust Valve	1
7	61007	O-Ring	1
8	61008	Spring	1
9	61009	O-Ring	1
10	61010	Spacer	1
11	61011	Retaining Ring	1
12	61012	Spacer	1
13	61013	Ball Bearing	1
14	61014	Rear End Plate	1
15	61015	Rotor	1
16	61016	Vane	4
17	61017	Sunk Key	1
18	61018	Cylinder	1
19	61019	Front End Plate	1
20	61020	Ball Bearing	1
21	61021	Cap	1
22	61022	Drive Pulley	1
23	61023	Hexagon Nut	1
24	61024	Shoe	1
25	61025	Hexagon Socket Head Bolt	1
26	61026	Dust Cover	1

Index	Part No.	Description	Qty.
27	61027	Nipple	1
28	61028	Spring	1
29	61029	Silencer	1
30	61030	Cross-Recessed Pan Hd Mach Screw	1
31	61031	Lever Support	1
32	61032	Cross-Recessed Pan Hd Mach Screw	3
33	61033	Spring Washer	2
34	61034	Hexagon Nut	1
35	61035	Cross-Recessed Pan Hd Mach Screw	1
36	61036	Spring Pin	1
37	61037	Cross-Recessed Pan Hd Mach Screw	1
38	61038	Ball Bearing	2
39	61039	Idle Pulley Shaft	1
40	61040	Spring	1
41	61041	Tension Bar	1
42	61042	Bushing	1
43	61043	Idle Pulley	1
44	61044	Spring	1
45	61045	Bracket	1
46	61046	Hexagon Soc Headless Set Screw	1
47	61047	Grinding Belt	1
48	61048	Spring Pin $\varnothing 2.5 \times 8L$	1
49	61049	Spring	1
50	61050	Safety Lever	1
51	61051	Lock Pin $\varnothing 3 \times 11.8L$	1

RPK-610 Repair Kit (contains #7,9,11,16,26)

RBK-610 Rebuild Kit (contains #35,36,37,38,39,43,44,45,46)

JSM-612 Mini Belt Sander



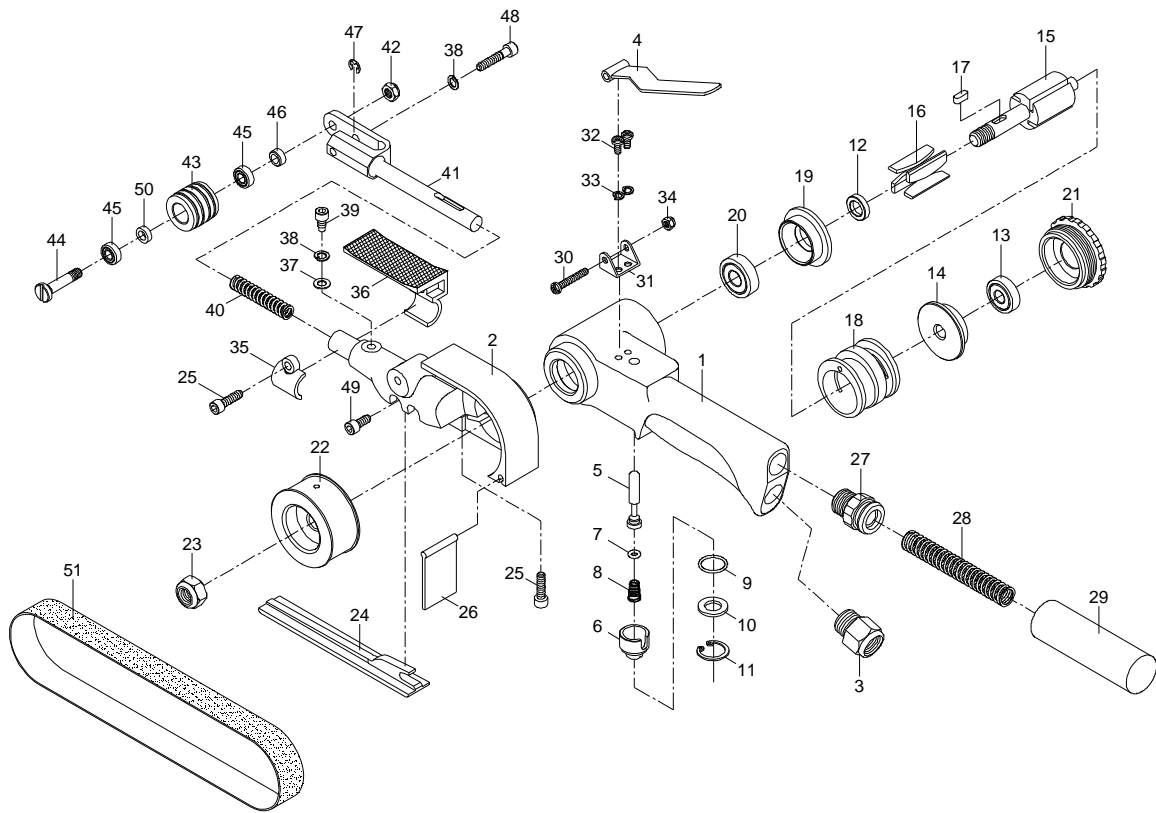
Index	Part No.	Description	Qty.
1	61201	Housing	1
2	61202	Guard Subassembly (w/61226)	1
3	61203	Air Inlet	1
4	61204	Lever	1
5	61205	Valve Stem	1
6	61206	Adjust Valve	1
7	61207	O-Ring	1
8	61208	Spring	1
9	61209	O-Ring	1
10	61210	Spacer	1
11	61211	Retaining Ring	1
12	61212	Spacer	1
13	61213	Ball Bearing	1
14	61214	Rear End Plate	1
15	61215	Rotor	1
16	61016	Vane	4
17	61217	Sunk Key	1
18	61218	Cylinder	1
19	61219	Front End Plate	1
20	61220	Ball Bearing	1
21	61221	Cap	1
22	61222	Drive Pulley	1
23	61223	Hexagon Nut	1
24	61224	Shoe	1
25	61225	Hexagon Socket Head Bolt	1

Index	Part No.	Description	Qty.
26	61226	Dust Cover	1
27	61227	Nipple	1
28	61228	Spring	1
29	61229	Silencer	1
30	61230	Cross-Recessed Pan Hd Mach Screw	1
31	61231	Lever Support	1
32	61232	Cross-Recessed Pan Hd Mach Screw	4
33	61233	Spring Washer	2
34	61234	Hexagon Nut	1
35	61235	Cross-Recessed Pan Hd Mach Screw	1
36	61236	Spring Pin	1
37	61237	Cross-Recessed Pan Hd Mach Screw	1
38	61238	Ball Bearing	2
39	61239	Idle Pulley Shaft	1
40	61240	Spring	1
41	61241	Tension Bar	1
42	61242	Bushing	1
43	61243	Idle Pulley	1
44	61244	Spring	1
45	61245	Bracket	1
46	61246	Hexagon Soc Headless Set Screw	1
47	61247	Extension Bar	1
48	61248	Spacer	1
49	61249	Lock Pin $\varnothing 3 \times 9.8L$	1
50	61250	Grinding Belt	1

RPK-612 Repair Kit (contains #7,9,16,26)

RBK-612 Rebuild Kit (contains #35,36,37,38,39,43,44,45,46,48,49)

JSM-620 Mini Belt Sander



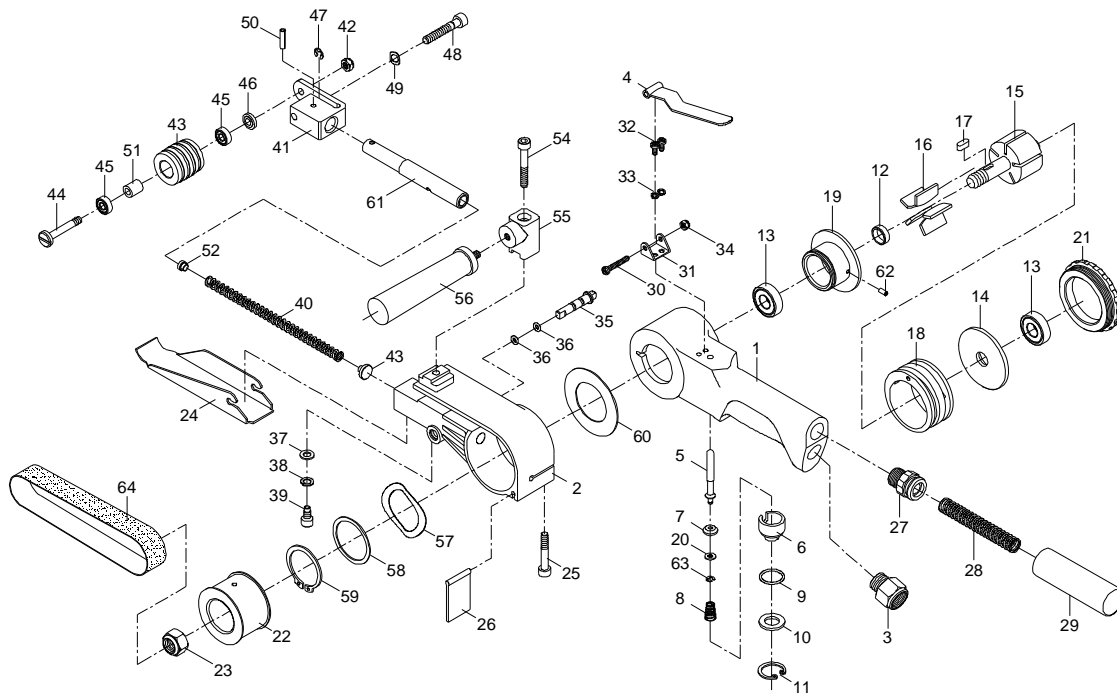
Index	Part No.	Description	Qty.
1	62001NPN	Housing	1
2	62002A	Guard SubAssy w/62026NPN	1
3	62003NPN	Air Inlet	1
4	62004NPN	Lever	1
5	62005NPN	Valve Stem	1
6	62006NPN	Adjust Valve	1
7	62007NPN	O-Ring	1
8	62008NPN	Spring	1
9	62009NPN	O-Ring	1
10	62010NPN	Spacer	1
11	62011NPN	Retaining Ring	1
12	62012NPN	Spacer	1
13	BB-608ZZ	Ball Bearing	1
14	62014NPN	Rear End Plate	1
15	62015NPN	Rotor	1
16	62016NPN	Vane (4 pcs/set)	4
17	62017NPN	Sunk Key	1
18	62018NPN	Cylinder	1
19	62019NPN	Front End Plate	1
20	BB-6000ZZ	Ball Bearing	1
21	62021NPN	Cap	1
22	62022NPN	Drive Pulley	1
23	62023NPN	Hexagon Nut	1
24	62024NPN	Shoe	1
25	62025NPN	Hexagon Socket Head Bolt	2
26	62026NPN	Dust Cover	1

Index	Part No.	Description	Qty.
27	62027NPN	Nipple	1
28	62028NPN	Spring	1
29	62029NPN	Silencer	1
30	62030NPN	Cross-Recessed Pan Hd Mach Screw	1
31	62031NPN	Lever Support	1
32	62032NPN	Cross-Recessed Pan Hd Mach Screw	1
33	62033	Spring Washer	1
34	62034	Hexagon Nut	1
35	62035	Bushing	1
36	62036	Finger Pad	1
37	62037	Washer	1
38	62038	Spring Washer	2
39	62039	Screw	1
40	62040	Spring	1
41	62041	Arm	1
42	62042	Nut	1
43	62043	Idle Pulley	1
44	62044	Shaft	1
45	62045	Ball Bearing	2
46	62046	Spacer	1
47	62047	Retaining Ring	1
48	62048	Bolt	1
49	62049	Bolt	1
50	62050	Spacer	1
51	62051NPN	Grinding Belt	1

RPK-620 Repair Kit (contains #7,9,11,16,26)

RBK-620 Rebuild Kit (contains #42,43,44,45,46,47,50)

JSM-630 Mini Belt Sander



Index	Part No.	Description	Qty.
1	63001	Housing	1
2	63002A	Guard Subassembly w/63026	1
3	63003	Air Inlet	1
4	63004	Lever	1
5	63005	Valve Stem	1
6	63006	Adjust Valve	1
7	63007	Seal	1
8	63008	Spring	1
9	63009	O-Ring	1
10	63010	Spacer	1
11	63011	Retaining Ring	1
12	63012	Spacer	1
13	63013	Ball Bearing	2
14	63014	Rear End Plate	1
15	63015	Rotor	1
16	63016	Vane (5 pcs/set)	5
17	63017	Sunk Key	1
18	63018	Cylinder	1
19	63019	Front End Plate	1
20	63020	Ball Bearing	1
21	63021	Cap	1
22	63022	Drive Pulley	1
23	63023	Hexagon Nut	1
24	63024	Flat Shoe	1
25	63025	Hexagon Socket Head Bolt	1
26	63026	Dust Cover	1
27	63027	Nipple	1
28	63028	Spring	1
29	63029	Silencer	1
30	63030	Cross-Recessed Pan Hd Mach Screw	1
31	63031	Lever Support	1
32	63032	Cross-Recessed Pan Hd Mach Screw	2
33	63033	Spring Washer	2

Index	Part No.	Description	Qty.
34	63034	Hexagon Nut	1
35	63035	Shoe Holder	1
36	63036	O-Ring	2
37	63037	Washer	1
38	63038	Spring Washer	1
39	63039	Screw	1
40	63040	Tension Spring	1
41	63041	Tension Bar	1
42	63042	Nut	1
43	63043	Idle Pulley	1
44	63044	Shaft	1
45	63045	Ball Bearing	2
46	63046	Spacer	1
47	63047	Retaining Ring	1
48	63048	Bolt	1
49	63049	Spring Washer	1
50	63050	Spring Pin	1
51	63051	Spacer	1
52	63052	Spring Retainer A	1
53	63053	Spring Retainer B	1
54	63054	Hexagon Soc Hd Bolt	1
55	63055	Sub Handle Holder	1
56	63056NPN	Sub Handle Assembly	1
57	63057NPN	Waved Lock Washer	1
58	63058	Thrust Washer	1
59	63059	Retaining Ring	1
60	63060	Thrust Washer	1
61	63061	Arm	1
62	63062NPN	Spring Pin	1
63	63063NPN	Retaining Ring	1
64	63064NPN	Grinding Belt	1

RPK-630 Repair Kit (contains #7,9,11,16,26,36,52,53,60)
 RBK-630 Rebuild Kit (contains #42,43,44,45,46,47,50,51)