



Operating and Maintenance Instructions

Air Hammer

Model JNS-2060



JET
427 New Sanford Road
LaVergne, Tennessee 37086
Ph.: 800-274-6848
www.jettools.com

Part No. M-JNS2060
Revision A2 05/2014
Copyright © 2014 JET

Warranty and Service

JET warrants every product it sells against manufacturers' defects. If one of our tools needs service or repair, please contact Technical Service by calling 1-800-274-6846, 8AM to 5PM CST, Monday through Friday.

Warranty Period

The general warranty lasts for the time period specified in the literature included with your product or on the official JET branded website.

- JET products carry a limited warranty which varies in duration based upon the product. (See chart below)
- Accessories carry a limited warranty of one year from the date of receipt.
- Consumable items are defined as expendable parts or accessories expected to become inoperable within a reasonable amount of use and are covered by a 90 day limited warranty against manufacturer's defects.

Who is Covered

This warranty covers only the initial purchaser of the product from the date of delivery.

What is Covered

This warranty covers any defects in workmanship or materials subject to the limitations stated below. This warranty does not cover failures due directly or indirectly to misuse, abuse, negligence or accidents, normal wear-and-tear, improper repair, alterations or lack of maintenance.

Warranty Limitations

Woodworking products with a Five Year Warranty that are used for commercial or industrial purposes default to a Two Year Warranty. Please contact Technical Service at 1-800-274-6846 for further clarification.

How to Get Technical Support

Please contact Technical Service by calling 1-800-274-6846. **Please note that you will be asked to provide proof of initial purchase when calling.** If a product requires further inspection, the Technical Service representative will explain and assist with any additional action needed. JET has Authorized Service Centers located throughout the United States. For the name of an Authorized Service Center in your area call 1-800-274-6846 or use the Service Center Locator on the JET website.

More Information

JET is constantly adding new products. For complete, up-to-date product information, check with your local distributor or visit the JET website.

How State Law Applies

This warranty gives you specific legal rights, subject to applicable state law.

Limitations on This Warranty

JET LIMITS ALL IMPLIED WARRANTIES TO THE PERIOD OF THE LIMITED WARRANTY FOR EACH PRODUCT. EXCEPT AS STATED HEREIN, ANY IMPLIED WARRANTIES OF MERCHANTABILITY AND FITNESS FOR A PARTICULAR PURPOSE ARE EXCLUDED. SOME STATES DO NOT ALLOW LIMITATIONS ON HOW LONG AN IMPLIED WARRANTY LASTS, SO THE ABOVE LIMITATION MAY NOT APPLY TO YOU.

JET SHALL IN NO EVENT BE LIABLE FOR DEATH, INJURIES TO PERSONS OR PROPERTY, OR FOR INCIDENTAL, CONTINGENT, SPECIAL, OR CONSEQUENTIAL DAMAGES ARISING FROM THE USE OF OUR PRODUCTS. SOME STATES DO NOT ALLOW THE EXCLUSION OR LIMITATION OF INCIDENTAL OR CONSEQUENTIAL DAMAGES, SO THE ABOVE LIMITATION OR EXCLUSION MAY NOT APPLY TO YOU.

JET sells through distributors only. The specifications listed in JET printed materials and on official JET website are given as general information and are not binding. JET reserves the right to effect at any time, without prior notice, those alterations to parts, fittings, and accessory equipment which they may deem necessary for any reason whatsoever. JET® branded products are not sold in Canada by JPW Industries, Inc.

Product Listing with Warranty Period

90 Days – Parts; Consumable items; Light-Duty Air Tools
1 Year – Motors; Machine Accessories; Heavy-Duty Air Tools; Pro-Duty Air Tools
2 Year – Metalworking Machinery; Electric Hoists, Electric Hoist Accessories; Woodworking Machinery used for industrial or commercial purposes
5 Year – Woodworking Machinery
Limited Lifetime – JET Parallel clamps; VOLT Series Electric Hoists; Manual Hoists; Manual Hoist Accessories; Shop Tools; Warehouse & Dock products; Hand Tools

NOTE: JET is a division of JPW Industries, Inc. References in this document to JET also apply to JPW Industries, Inc., or any of its successors in interest to the JET brand.



Warnings

1. Read and understand this entire manual before attempting assembly or operation.
2. Read and understand the warnings posted on the tool and in this manual. Failure to comply with all of these warnings may cause serious injury.
3. Replace the warning labels if they become obscured or removed.
4. This air hammer is designed and intended for use by properly trained and experienced personnel only. If you are not familiar with the proper and safe operation of an air hammer, do not use until proper training and knowledge have been obtained.
5. Do not use this tool for other than its intended use. If used for other purposes, JET disclaims any real or implied warranty and holds itself harmless from any injury that may result from that use.
6. Always wear approved safety glasses/face shields while using this air hammer. (Everyday eyeglasses only have impact resistant lenses; they are *not* safety glasses.)
7. Wear ear protectors (plugs or muffs) if the noise exceeds normal levels.
8. Use gloves if needed when operating the air hammer. Keep hands and body away from the working area of the tool.
9. Some dust created by power sanding, sawing, grinding, drilling and other construction activities contain chemicals known to cause cancer, birth defects or other reproductive harm. Some examples of these chemicals are:
 - Lead from lead based paint.
 - Crystalline silica from bricks, cement and other masonry products.
 - Arsenic and chromium from chemically treated lumber.Your risk of exposure varies, depending on how often you do this type of work. To reduce your exposure to these chemicals, work in a well-ventilated area and work with approved safety equipment, such as face or dust masks that are specifically designed to filter out microscopic particles.
10. Do not operate this tool while tired or under the influence of drugs, alcohol or any medication.
11. Maintain proper balance and keep your footing at all times. Non-slip footwear or anti-skid floor strips are recommended.
12. Secure the work with clamps or a vise so that both hands are free to operate the air hammer.
13. Before operating this air hammer, remove tie, rings, watches and other jewelry, and roll sleeves up past the elbows. Remove all loose clothing and confine long hair.
14. Excessive air pressure will decrease the life of the tool and may cause a hazardous situation.
15. Check air hoses for wear, and keep them away from heat and sharp edges. Do not carry the air hammer by the air hose.
16. Do not use this air tool near flammable objects or potentially explosive environments.
17. Do not leave a connected tool unattended. When not in use, disconnect tool from the air source.
18. Disconnect air hammer from air supply before making adjustments or changing accessories.
19. Keep work area clean and free of clutter.
20. Keep visitors a safe distance from the work area. **Keep children away.**
21. Give your work undivided attention. Looking around, carrying on a conversation and “horse-play” are careless acts that can result in serious injury.
22. Do not force a tool or attachment to do a job for which it was not designed. The right tool will do the job better and safer.

23. Repetitive motions and/or exposure to constant vibration can be harmful to hands and arms. Take breaks and relax your hands occasionally during extended operation of the air hammer.
24. Compressed air can be harmful if directed toward sensitive areas of the body, and may propel small particles caught in the air stream. Exercise proper caution.
25. Use recommended accessories; improper accessories may be hazardous.
26. Maintain tools with care. Keep the air hammer clean and oiled for best and safest performance.

Familiarize yourself with the following safety notices used in this manual:

CAUTION This means that if precautions are not heeded, it may result in minor injury and/or possible machine damage.

WARNING This means that if precautions are not heeded, it may result in serious injury or possibly even death.

Specifications

Stock Number.....	JNS-2060
Stroke Length (in.).....	2-5/8
Bore Diameter (in.).....	3/4
Blows Per Minute.....	3,000
Shank Size (in.).....	0.401 Parker taper
Required Air Pressure (PSI).....	90
Average Air Consumption (CFM).....	5.5
Air Inlet (in.).....	1/4 NPT
Air Hose Inside Diameter (in.).....	3/8
Vibration Value (m/s ²).....	7.5
Overall Length (in.).....	8-1/4
Net Weight (lbs.).....	4
Shipping Weight (lbs.).....	5.8

The above specifications were current at the time this manual was published, but because of our policy of continuous improvement, JET reserves the right to change specifications at any time and without prior notice, without incurring obligations.

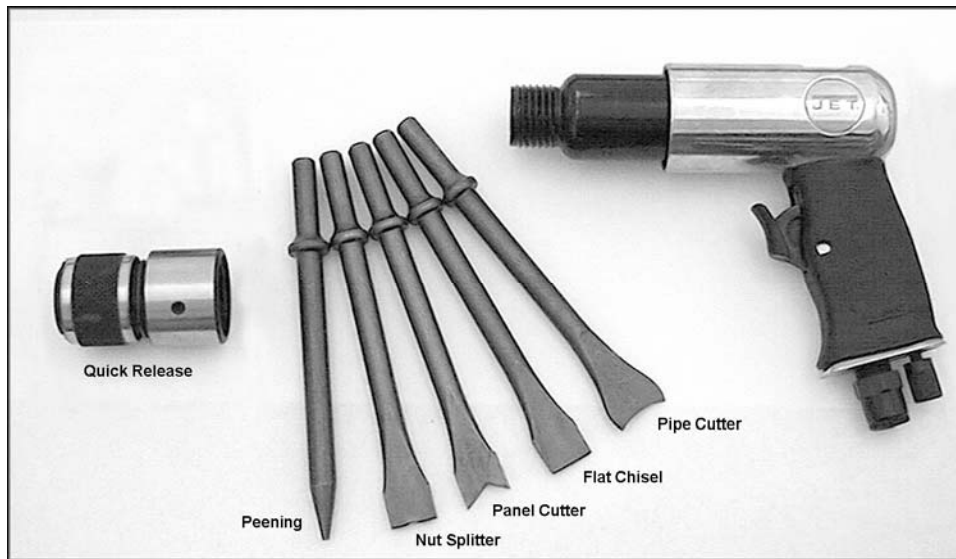
Unpacking

Remove all parts from the box and check for shipping damage. Report any damage immediately to your distributor and shipping agent.

Compare the contents of the box with the following parts list to make sure all parts are intact. Any missing parts should be reported to your distributor. Read this instruction manual thoroughly for operation, maintenance and safety instructions.

Contents of the Box

- 1 Air Hammer
- 1 Quick Release Chuck
- 5 *Chisels:
 - 1 Peening Tool, 5" Lg.
 - 1 Nut Splitter, 5" Lg. (3mm opening)
 - 1 Panel Cutter, 5" Lg.
 - 1 Flat Chisel, 5" Lg.
 - 1 Pipe Cutter, 5" Lg.
- 1 Operating Instructions and Parts Manual
- 1 Warranty Card



* Some typical uses for chisels:

- Peening Chisel – for peening welds, punching, etc.
- Nut Splitter – for removal of corroded or frozen nuts
- Flat Chisel – scraping, chipping, scaling, metal cutting, cleaning welds, paint scraping, rivet busting, etc.
- Panel Cutter – for automotive panels, vehicle extrication in rescue operations, etc.
- Pipe Cutter – cutting off tail pipes

⚠WARNING

Read and understand the entire contents of this manual before attempting set-up or operation! Failure to comply may cause serious injury.

Operation

1. The Air Hammer must be properly lubricated before operating. See "Maintenance" section for oiling instructions.
2. Pull back on the knurled ring of the chuck and insert the chisel shank into the chuck (Figure 1). The ledge on the shank must go beyond the four steel balls inside the chuck in order to be secured. (NOTE: It may require some force to move the chisel ledge beyond the steel balls.) When the chisel is installed, release the knurled ring.
3. Remove the protective cap from the air inlet, and connect the air hammer to the air supply. Make sure the air pressure is set to 90psi.

IMPORTANT: Connecting a quick-change coupling directly to the air hammer is not recommended, as vibration may cause the connection to fail. Instead, add a leader hose and install any quick-change couplings farther down the line.

4. Press the blade of the chisel against the target surface, and press the trigger to begin the hammering action. Adjust the speed as needed with the regulator knob (Figure 2).

Maintenance

The Air Hammer should be lubricated daily (or before each use) with air tool oil through the air inlet. During continual operation, it should be oiled every 1 to 2 hours. This can be done either with an in-line oiler, or manually. If done manually, proceed as follows:

1. Disconnect the air hose from the air hammer.
2. Place one or two drops of air tool oil* into the air inlet (Figure 2).

[*NOTE: Air tool oil not provided. It may be purchased from your JET dealer, or is available at most major hardware and tool stores. SAE #10 weight oil may be used as a substitute. Do not use detergent oil.]

3. Re-connect the air. Run the air hammer for a few seconds to distribute the oil throughout the tool. NOTE: Excess oil may be propelled from the cylinder of the tool; point it in a safe direction.
4. When finished operating the air hammer, before storing it disconnect the air hose and place 4 or 5 drops of air tool oil into the air inlet; re-connect the air and run the tool for a few seconds to distribute the oil.

5. Avoid storing the air hammer in very humid locations which promotes rusting of internal mechanisms, and always oil it before storage.

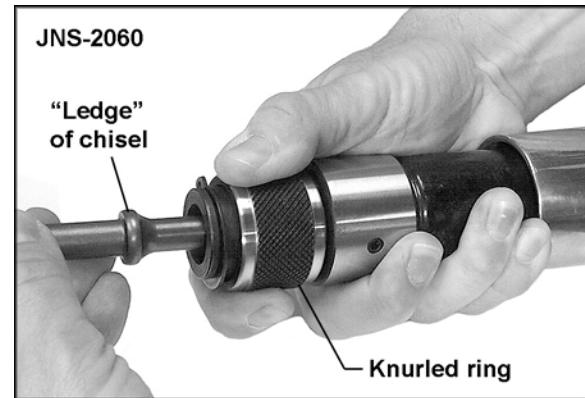


Figure 1

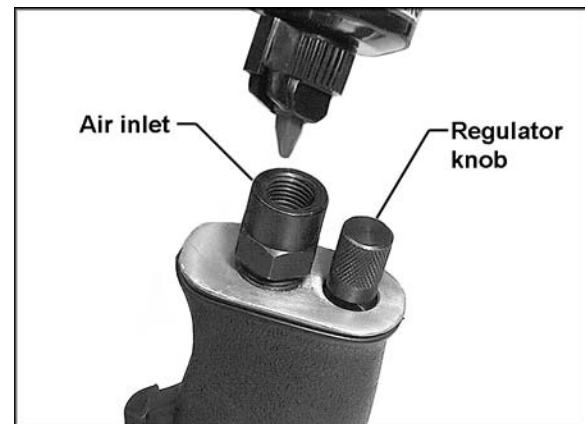


Figure 2

Air Connection

1. Make sure the air compressor supplies clean air at the correct CFM for the air hammer.

CAUTION Excess air pressure and/or unclean air will shorten the tool's life and may create a hazardous situation.

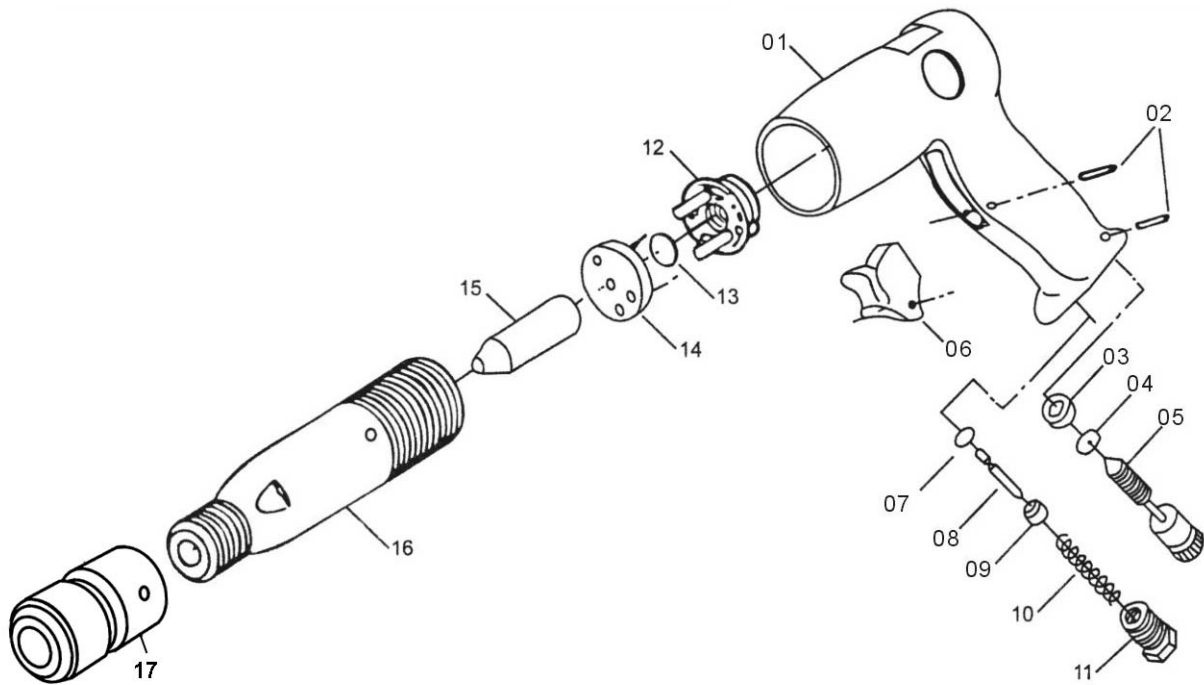
2. Set air pressure to 90 psi.
3. Drain the water from the air compressor tank daily, as well as any condensation from the air lines. Water in the air line may enter the tool and cause damage.
4. Change filters on the air system on a regular basis.
5. Air line pressure should be increased accordingly to compensate for extra long air hoses (usually over 25 feet). Inside diameter of the hose must be a minimum of 3/8".

Troubleshooting

Trouble	Probable Cause	Remedy
Air Hammer does not operate at normal speed; or speed remains constant when turning the regulator.	Air pressure is too low.	Adjust air pressure to 90psi.
	Air lines are twisted, or there is a blockage in them.	Untwist or clean out air lines.
	Air compressor is malfunctioning, or is not sufficient capacity for the tool.	Replace air compressor.
	Regulator is malfunctioning.	Replace regulator.
Stops operating.	No air pressure.	Check air compressor and hoses. Make sure compressor is set at 90psi, and air lines are not twisted.
	Throttle or trigger is malfunctioning.	Disassemble and repair/replace throttle or trigger.
Hammering power is diminished.	Air leakage.	Check connections at the air inlet, the o-rings, etc. Make adjustments or repairs as needed.
Starts immediately as soon as air is connected.	Throttle or trigger is malfunctioning.	Inspect and repair throttle and/or trigger.
Abnormal vibration and/or excessive heat develops in the tool.	Improper lubrication.	Lubricate properly according to instructions in this manual.

To order parts or reach our service department, call 1-800-274-6848 Monday through Friday (see our website for business hours, www.jettools.com). Having the Model Number and Serial Number of your tool available when you call will allow us to serve you quickly and accurately.

Parts List for JNS-2020 and JNS-2060 Air Hammers



Index No.	Part No.	Description	Qty
01.....	JNS2020-01.....	Handle.....	1
02.....	JNS2020-02.....	Pin.....	2
03.....	JNS2020-03.....	Ball Seat.....	1
04.....	JNS2020-04.....	O-Ring.....	1
05.....	JNS2020-05.....	Regulator.....	1
06.....	JNS2020-06.....	Trigger.....	1
07.....	JNS2020-07.....	O-Ring.....	1
08.....	JNS2020-08.....	Pin.....	1
09.....	JNS2020-09.....	Pin Seat.....	1
10.....	JNS2020-10.....	Throttle Spring.....	1
11.....	JNS2020-11.....	Hose Adaptor.....	1
12.....	JNS2020-12.....	Upper Valve Case.....	1
13.....	JNS2020-13.....	Valve Disc.....	1
14.....	JNS2020-14.....	Lower Valve Case.....	1
15.....	JNS2020-15.....	Piston.....	1
16.....	JNS2020-16.....	Cylinder.....	1
17.....	JNS2060-17.....	Quick Release Chuck.....	1
18.....	JNS2020-18.....	Peening Chisel, 5" Lg. (shown on page 5)....	1
19.....	JNS2020-19.....	Nut Splitter Chisel, 5" Lg, 3mm opening (shown on page 5).....	1
20.....	JNS2020-20.....	Flat Chisel, 5" Lg. (shown on page 5).....	1
21.....	JNS2020-21.....	Panel Cutter Chisel, 5" Lg. (shown on page 5).....	1
22.....	JNS2020-22.....	Pipe Cutter Chisel, 5" Lg. (shown on page 5).....	1
.....	JNS2020-WL.....	Warning Label (not shown).....	1
.....	JSG-1304.....	4 Pc. Chisel Set (Includes #18, 19, 20 and 21).....