



Operating Instructions and Parts Manual AFS-2000 Air Filtration



JET
427 New Sanford Road
LaVergne, Tennessee 37086
Ph.: 800-274-6848
www.jettools.com

Part No. M-708615
Revision B2 10/2018
Copyright © 2014 JET



IMPORTANT SAFETY INSTRUCTIONS

WARNING – To reduce risk of injury:

1. **FOR YOUR OWN SAFETY, READ INSTRUCTION MANUAL BEFORE OPERATING THE TOOL.** Learn the tool's application and limitations as well as the specific hazards peculiar to it.
2. **KEEP GUARDS IN PLACE** and in working order.
3. **ALWAYS WEAR EYE PROTECTION.**
4. **GROUND ALL TOOLS.** If tool is equipped with three prong plug, it should be plugged into a three-hole electrical receptacle. If an adapter is used to accommodate a two prong receptacle, the adapter lug must be attached to a known ground. Never remove the third prong.
5. **KEEP WORK AREA CLEAN.** Cluttered areas and benches invite accidents.
6. **DON'T USE IN DANGEROUS ENVIRONMENT.** Don't use power tools in damp or wet locations, or expose them to rain. Keep work area well-lighted.
7. **KEEP CHILDREN AND VISITORS AWAY.** All children and visitors should be kept a safe distance from work area.
8. **MAKE WORKSHOP CHILDPROOF.** Use padlocks, master switches, or remove starter keys.
9. **DON'T FORCE TOOL.** It will do the job better and be safer at the rate for which it was designed.
10. **USE RIGHT TOOL.** Don't force tool or attachment to do a job for which it was not designed.
11. **WEAR PROPER APPAREL.** No loose clothing, gloves, neckties, rings, bracelets, or other jewelry to get caught in moving parts. Nonslip footwear is recommended. Wear protective hair covering to contain long hair.
12. **ALWAYS USE SAFETY GLASSES.** Wear safety glasses (must comply with ANSI Z87.1). Everyday eyeglasses only have impact resistant lenses; they are not safety glasses. Also use face or dust mask if cutting operation is dusty.
13. **SECURE WORK.** Use clamps or a vise to hold work when practical. It's safer than using your hands and frees both hands to operate tool.
14. **DON'T OVERREACH.** Keep proper footing and balance at all times.
15. **MAINTAIN TOOLS IN TOP CONDITION.** Keep tools sharp and clean for best and safest performance. Follow instructions for lubricating and changing accessories.
16. **DISCONNECT TOOLS** before servicing and when changing filters.
17. **USE RECOMMENDED ACCESSORIES.** The use of accessories and attachments not recommended by manufacturer may cause hazards or risk of injury to persons.
18. **AVOID ACCIDENTAL STARTING.** Make sure switch is in "OFF" position before plugging in power cord.
19. **NEVER STAND ON TOOL.** Serious injury could occur if the tool is tipped or if the fan blade is accidentally contacted.
20. **CHECK DAMAGED PARTS.** Before further use of the tool, a guard or other part that is damaged should be carefully checked to ensure that it will operate properly and perform its intended function-check for alignment of moving parts, binding of moving parts, breakage of parts, mounting, and any other conditions that may affect its operation. A guard or other part that is damaged should be properly repaired or replaced.
21. **NEVER LEAVE TOOL RUNNING UNATTENDED. TURN POWER OFF.** Don't leave tool until it comes to a complete stop.
22. **DRUGS, ALCOHOL, MEDICATION.** Do not operate tool while under the influence of drugs, alcohol or any medication.

23. **MAKE SURE TOOL IS DICONNECTED FROM POWER SUPPLY** while motor is being mounted, connected or reconnected.

⚠ WARNING: This product can expose you to chemicals including lead which is known to the State of California to cause cancer and birth defects or other reproductive harm. For more information go to <http://www.p65warnings.ca.gov>.

⚠ WARNING: Drilling, sawing, sanding or machining wood products generates wood dust and other substances known to the State of California to cause cancer. Avoid inhaling dust generated from wood products or use a dust mask or other safeguards for personal protection.

Wood products emit chemicals known to the State of California to cause birth defects or other reproductive harm. For more information go to <http://www.p65warnings.ca.gov/wood>.

-- SAVE THESE INSTRUCTIONS --

Familiarize yourself with the following safety notices used in this manual:

⚠ CAUTION This means that if precautions are not heeded, it may result in minor injury and/or possible machine damage.

⚠ WARNING This means that if precautions are not heeded, it may result in serious or even fatal injury.

Safety Rules for the AFS-2000

1. Read and understand instruction manual before installing or operating air cleaner.
2. To reduce the risk of injury disconnect the air cleaner from the power source (unplug) before servicing or changing filters.
3. If ceiling mounted, bottom of air cleaner must be at least 7 feet above the floor.
4. If ceiling mounted, mounts must be anchored to building structure which will support a minimum of at least 220 pounds. Never mount to surfaces such as dry wall or false ceiling grids, etc.
5. To reduce the risk of electrical shock, do not expose air cleaner to water or rain.
6. Never duct a machine directly into the air cleaner.
7. To avoid a potentially dangerous situation, do not use this equipment to filter volatile fumes or smoke. This air cleaner is designed and intended for the filtration of air borne wood dust only. It is neither designed nor intended for any other purpose whatsoever.
8. Failure to comply may result in serious injury and / or property damage.

Table of Contents

IMPORTANT SAFETY INSTRUCTIONS	2
Safety Rules for the AFS-2000	3
Table of Contents	4
Introduction	4
Specifications	4
Electrical Requirements	5
Unpacking	6
Contents of Shipping Carton	6
Assembly	6
Controls and Features	7
Changing the Filters	7
AFS-2000 Parts Breakdown	9
AFS-2000 Parts List	10
Electrical Connections	11
Warranty and service	12

Introduction

This manual is provided by JET covering the safe operation and maintenance procedures for a JET Model AFS-2000 Air Filtration Unit. This manual contains instructions on installation, safety precautions, general operating procedures, maintenance instructions and parts breakdown. This machine has been designed and constructed to provide consistent, long-term operation if used in accordance with instructions set forth in this manual. If there are any questions or comments, please contact either your local supplier or JET. JET can also be reached at our web site: www.jettools.com.

Register your product using the mail-in card provided, or register online:

<http://www.jettools.com/us/en/service-and-support/product-registration/>

Specifications

Model Number	AFS-2000
Stock Number	708615
Outer Filter	5 Microns
Inner Filter	1 Micron
Overall Dimensions (LxWxH/in)	44 x 24 x 20
Sound Rating @ 3ft	High Speed 73.8 dB
.....	Medium Speed 62.0 dB
.....	Low Speed 59.1 dB
Air Flow	High Speed 1700 CFM
.....	Medium Speed 1200 CFM
.....	Low Speed 800 CFM
Filter Cycle	1.88 per minute
Cycles (20'x20'x8')	31.91 per hour
Motor	1/3 HP, 115V, 115V Only
Shipping Size (LxWxH/in)	46 x 26 x 22
Net Weight	110 lbs.
Shipping Weight	121 lbs.

The above specifications were current at the time this manual was published, but because of our policy of continuous improvement, JET reserves the right to change specifications at any time and without prior notice, without incurring obligations.

Electrical Requirements

⚠ WARNING Electrical connections must be made by a qualified electrician in compliance with all relevant codes. This machine must be properly grounded to help prevent electrical shock and possible fatal injury.

In the event of a malfunction or breakdown, grounding provides a path of least resistance for electric current to reduce the risk of electric shock. This tool is equipped with an electric cord having an equipment-grounding conductor and a grounding plug. The plug must be plugged into a matching outlet that is properly installed and grounded in accordance with all local codes and ordinances.

Do not modify the plug provided. If it will not fit the outlet, have the proper outlet installed by a qualified electrician.

Improper connection of the equipment-grounding conductor can result in a risk of electric shock. The conductor, with insulation having an outer surface that is green with or without yellow stripes, is the equipment-grounding conductor. If repair or replacement of the electric cord or plug is necessary, do not connect the equipment-grounding conductor to a live terminal.

Check with a qualified electrician or service personnel if the grounding instructions are not completely understood, or if in doubt as to whether the tool is properly grounded.

Use only three wire extension cords that have three-prong grounding plugs and three-pole receptacles that accept the tool's plug.*

Repair or replace a damaged or worn cord immediately.

This tool is intended for use on a circuit that has an outlet that looks like the one illustrated in Figure A below. The tool has a grounding plug that looks like the grounding plug as illustrated in Figure A below. A temporary adapter, which looks like the adapter as illustrated in Figure B, may be used to connect this plug to a two-pole receptacle, as shown in Figure B if a properly grounded outlet is not available.** The temporary adapter should only be used until a properly grounded outlet can be installed by a qualified electrician. The green colored rigid ear or tab, extending from the adapter, must be connected to a permanent ground such as a properly grounded outlet box.

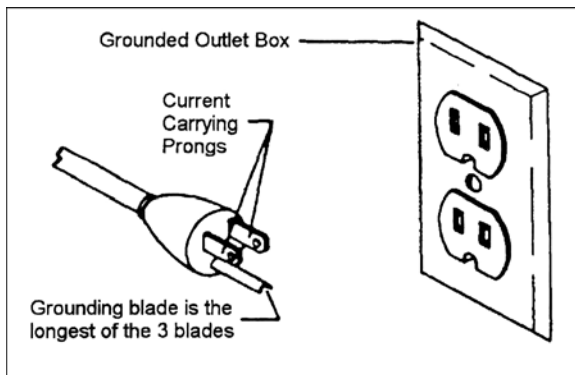


Figure A

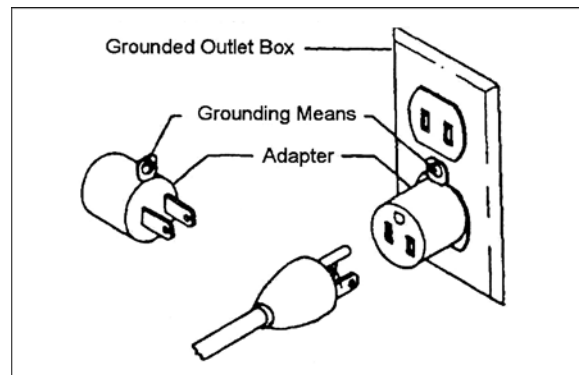


Figure B

* Canadian electrical codes require extension cords to be certified SJT type or better.

** Use of an adapter in Canada is not acceptable.

Unpacking

Contents of Shipping Carton

- 1 Air Filtration Unit
- 1 Remote Control
- 2 AAA Batteries
- 4 Eye Bolts, Washers and Hex Nuts
- 1 Owner's Manual (not shown)
- 1 Product Registration Card (not shown)

Tools Required for Assembly

10 mm Wrench

- The air filtration unit does not require much assembly. You should take into consideration how and where you will place this unit.
- This unit will work best if it is located away from corners, and heating/cooling vents.
- If using on sawhorses the air filtration unit should be clamped in place.
- This unit is specifically designed to circulate and filter non-metallic dust, which is generated throughout the work area.



Figure 1

Assembly

CAUTION Mounts must be anchored to building structure, which will support a minimum of 220 pounds. Never mount to surfaces such as dry wall or false ceiling grids, etc.

1. Remove all packing from inside of the unit by opening the side panel.
2. Make sure the hex nut (A, Figure 2) is threaded all the way up the eyebolt (B, Figure 2).
3. Place a flat washer (C, Figure 2) on the eye bolt. Screw the eye bolt into the cabinet and tighten hex nut against the cabinet top. You will need to hold the eyebolt so it does not spin while tightening the hex nut.
4. Repeat steps for remaining three eyebolts.

Note: Make sure chain and ceiling hooks are properly rated for hanging this unit. Hang unit with a seven-foot clearance from the floor.

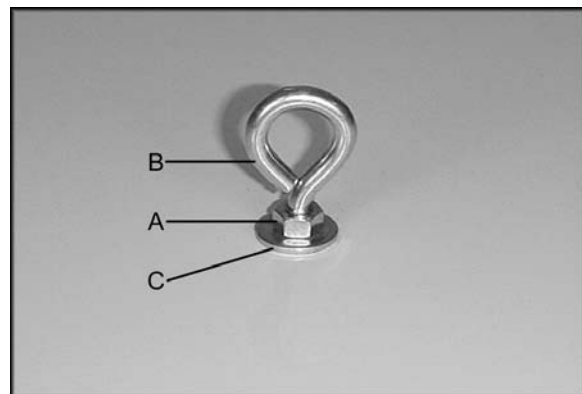


Figure 2

Controls and Features

Remote Control:

Time button (A, Figure 3) controls the three different settings.

2H will light up on the back of the unit with one press of the time button. The air filtration system will operate for 2 hours then shut off.

4H will light up on the back of the unit by pressing the time button twice. The air filtration system will operate for 4 hours then shut off.

8H will light up on the back of the unit by pressing the time button three times. The air filtration system will operate for 8 hours then shut off.

Speed button (B, Figure 3) controls the three different settings; Low, Medium and High. There is also a manual button (C, Figure 3) on the backside of this unit which controls the speed.

On/Off button (D, Figure 3) turns the unit on and off. There is also a manual on/off button (E, Figure 3) on the backside of the unit. Pressing this button will turn the machine on Low.

Overload reset switch (F, Figure 3) will pop in the case of overload. Wait 3-5 minutes and press the reset switch.

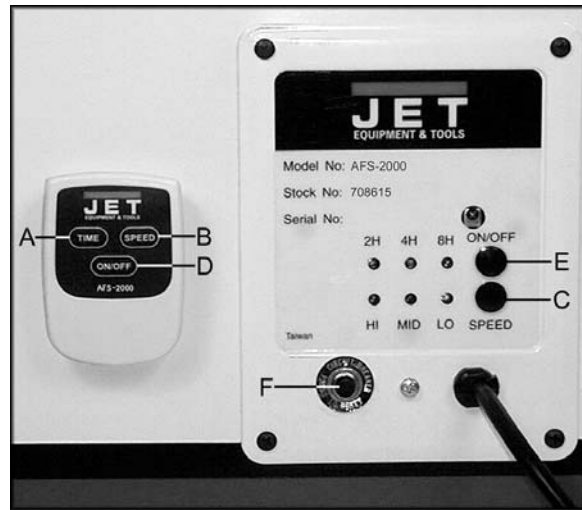


Figure 3

Changing the Filters

⚠WARNING To reduce the risk of injury, disconnect the air filtration unit from the power source (unplug) before servicing or changing filters. Failure to comply may cause serious injury.

Outer Filter: Remove from the side of the cabinet (A, Figure 4). This filter should be replaced depending on the usage and environment of your shop. JET sells a replacement metal framed filter that can be blown out or washed, (stock # 708724 shown in figure 4).

Inner Filter: You must remove the two bolts (A, Figure 5) that hold the cover in place. Remove the cover. Remove the inner filter (A, Figure 6) from the side of the cabinet. Replace the cover and four bolts.

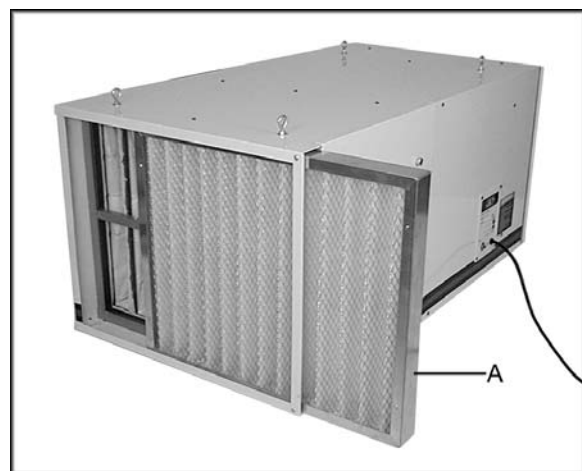


Figure 4

Accessory Filter: An additional electrostatic filter can be added to this empty slot (B, Figure 6). Replace the cover and four bolts.

Diffuser: The diffuser (A, Figure 7) should not need any maintenance. You can remove from the side of the cabinet.

The filters should be replaced depending on the amount of usage and the environment of your shop. Clogged filters will reduce the amount of air circulation.



Figure 5

Order replacement filters using the below listed stock numbers.

- 330025 Air Diffuser
- 708722 Outer Filter (cardboard frame)
- 708723 Inner Filter
- 708724 Outer Filter (metal frame washable)

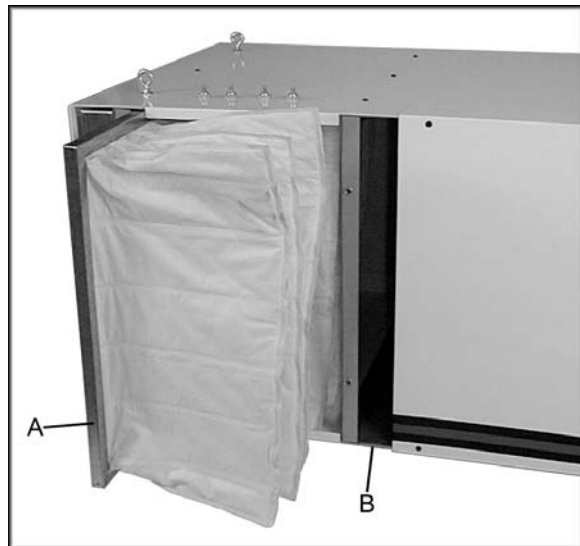


Figure 6

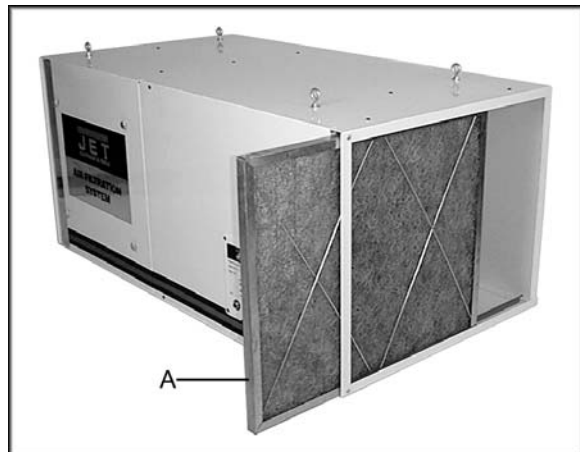
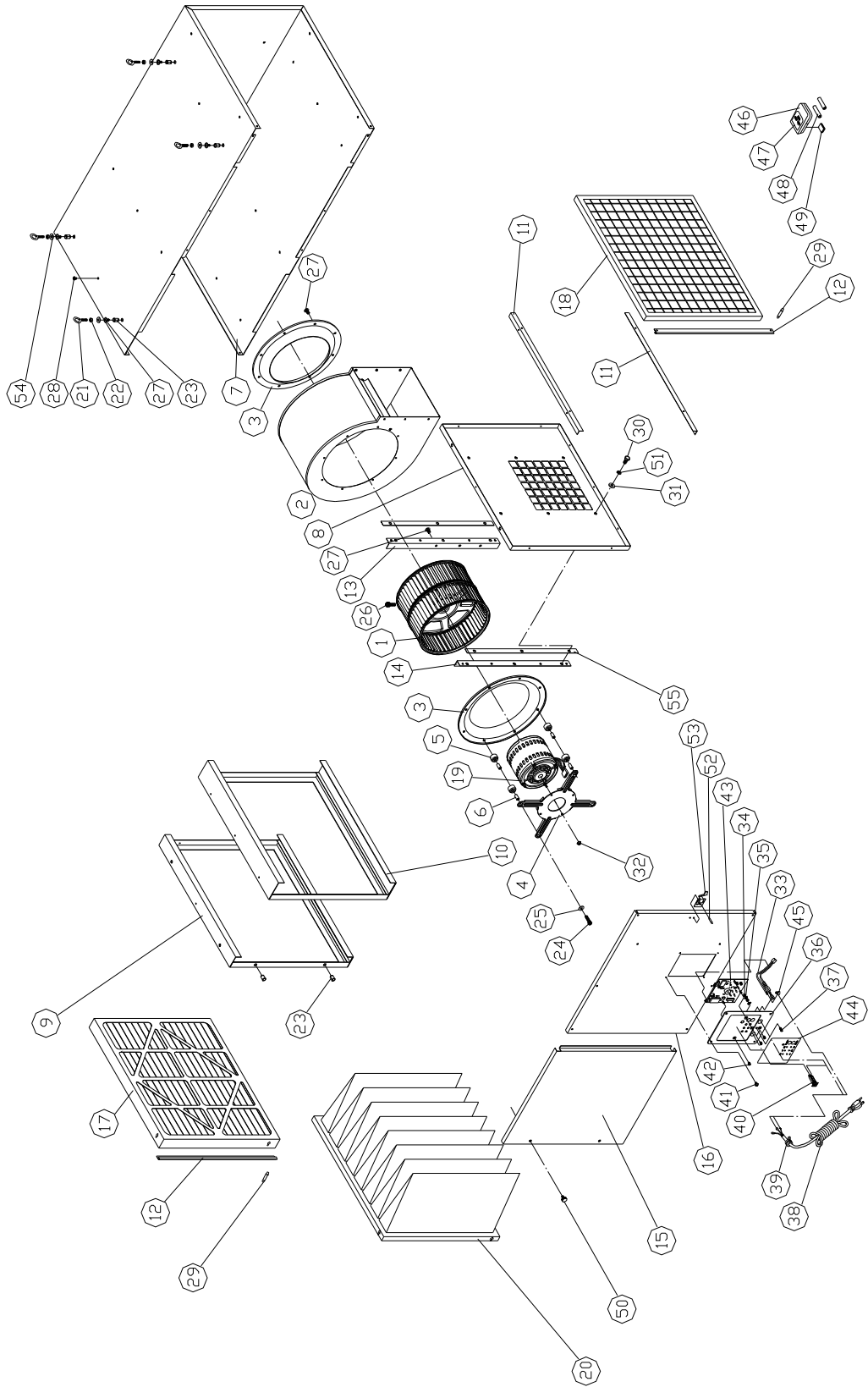


Figure 7

AFS-2000 Parts Breakdown



AFS-2000 Parts List

To order parts or reach our service department, call 1-800-274-6848, Monday through Friday (see our website for business hours, www.jettools.com). Having the Model Number and Serial Number of your machine available when you call will allow us to serve you quickly and accurately.

Non-proprietary parts, such as fasteners, can be found at local hardware stores, or may be ordered from JET. Some parts are shown for reference only, and may not be available individually.

Index No.	Part No.	Description	Size	Qty
1	330001	Fan Blade		1
2	330002	Fan Housing		1
3	330003	Air Guide Plate		2
4	330004	Flange		1
5	330005	Spacer		4
6	330006	Sleeve		4
7	330040	Box Plate		1
	LM000280	JET Label		2
	LM000351	Warning Label		1
8	AB330010	Fan Plate		1
9	AB330041	Frame		1
10	AB330042	Frame		1
11	330011	Air Filter Support		2
12	330012	Air Box Support		2
13	330017	Fan Support Bar (1)		1
14	330018	Fan Support Bar (2)		1
15	330019	Side Cover		1
16	330020	Fan Cover		1
17	708722	Outer Filter (cardboard frame)	24"x20"x2"	1
	708724	Outer Filter (metal frame: washable)	24"x20"x2"	1
18	330025	Air Diffuser	24"x20"x1"	1
19	330026	Motor		1
	CA003000	Capacitor (not shown)		1
20	708723	Inner Filter	24"x20"x12"x8B	1
21	OO1023	Eye Bolt		4
22	NH061000	Nut	M6	4
23	10042	Nut		6
24	SR060600	Hex Socket Bolt	M6x30	4
25	WF061620	Washer	M6x16	4
26	SR089400	Hex Socket Bolt	M8x16	1
27	SF069200	Pan Head Bolt W/Flange	M6x8	22
28	ST049200	Tapping Screw	M4x8	28
29	BR000062	Rivet		4
30	SH089400	Hex Head Bolt	M8x16	6
31	WF081818	Washer	M8x18	6
32	NF050800	Nut	M5	4
33	OO1033	Switch Wire W/Terminal	18AWG	1
34	NH050800	Nut	M5	2
35	WE050000	Star Washer (External)	M5	2
36	OO1022	Switch Plate		1
37	SP059300	Pan Head Bolt	M5x12	1
38	IC001015	Cord	18AWGx3C	1
39	998623	Strain Relief		1
40	330039	8A Thermos Switch		1
41	ST049200	Tapping Screw	M4x8	4
42	SN490200	Counter Sunk Bolt	1/8"x1/4"	3
43	330043	PC Board		1
44	LM000354	Circuit Board Label		1
45	990638	Wiring Nut	P2	1
46	708711	Remote Control		1
47	LM000279	Remote Label *		1
48		Batteries AAA (local purchase) *		2
49		Hook-and-Loop Fastener Pad (local purchase) *		1

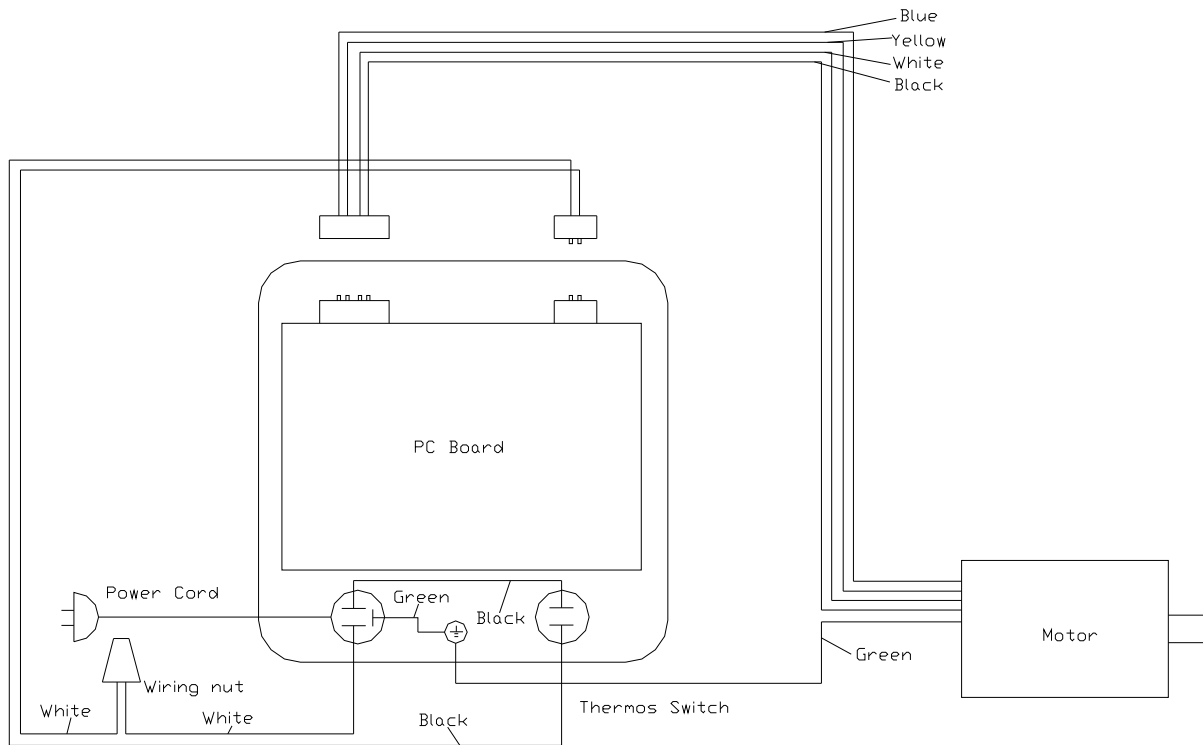
* items are included with 708711 Remote Control.

Index No.	Part No.	Description	Size	Qty
50	330030	Bolt		2
51	WS080000	Spring Washer	M8	6
52	BR000031	Rivet		2
53	AB001008	Door Clip Set		1
54	WF061620	Flat Washer	M6	4
55	330046	Pad		2

Optional Replacement Filters:

.....	708722	Outer Filter (cardboard frame)	24"x20"x2"	1
.....	708724	Outer Filter (metal frame: washable)	24"x20"x2"	1
.....	330025	Air Diffuser	24"x20"x1"	1
.....	708723	Inner Filter	24"x20"x12"x8B	1

Electrical Connections



Warranty and service

JET warrants every product it sells against manufacturers' defects. If one of our tools needs service or repair, please contact Technical Service by calling 1-800-274-6846, 8AM to 5PM CST, Monday through Friday.

Warranty Period

The general warranty lasts for the time period specified in the literature included with your product or on the official JET branded website.

- JET products carry a limited warranty which varies in duration based upon the product. (See chart below)
- Accessories carry a limited warranty of one year from the date of receipt.
- Consumable items are defined as expendable parts or accessories expected to become inoperable within a reasonable amount of use and are covered by a 90 day limited warranty against manufacturer's defects.

Who is Covered

This warranty covers only the initial purchaser of the product from the date of delivery.

What is Covered

This warranty covers any defects in workmanship or materials subject to the limitations stated below. This warranty does not cover failures due directly or indirectly to misuse, abuse, negligence or accidents, normal wear-and-tear, improper repair, alterations or lack of maintenance. JET woodworking machinery is designed to be used with Wood. Use of these machines in the processing of metal, plastics, or other materials outside recommended guidelines may void the warranty. The exceptions are acrylics and other natural items that are made specifically for wood turning.

Warranty Limitations

Woodworking products with a Five Year Warranty that are used for commercial or industrial purposes default to a Two Year Warranty. Please contact Technical Service at 1-800-274-6846 for further clarification.

How to Get Technical Support

Please contact Technical Service by calling 1-800-274-6846. **Please note that you will be asked to provide proof of initial purchase when calling.** If a product requires further inspection, the Technical Service representative will explain and assist with any additional action needed. JET has Authorized Service Centers located throughout the United States. For the name of an Authorized Service Center in your area call 1-800-274-6846 or use the Service Center Locator on the JET website.

More Information

JET is constantly adding new products. For complete, up-to-date product information, check with your local distributor or visit the JET website.

How State Law Applies

This warranty gives you specific legal rights, subject to applicable state law.

Limitations on This Warranty

JET LIMITS ALL IMPLIED WARRANTIES TO THE PERIOD OF THE LIMITED WARRANTY FOR EACH PRODUCT. EXCEPT AS STATED HEREIN, ANY IMPLIED WARRANTIES OF MERCHANTABILITY AND FITNESS FOR A PARTICULAR PURPOSE ARE EXCLUDED. SOME STATES DO NOT ALLOW LIMITATIONS ON HOW LONG AN IMPLIED WARRANTY LASTS, SO THE ABOVE LIMITATION MAY NOT APPLY TO YOU. JET SHALL IN NO EVENT BE LIABLE FOR DEATH, INJURIES TO PERSONS OR PROPERTY, OR FOR INCIDENTAL, CONTINGENT, SPECIAL, OR CONSEQUENTIAL DAMAGES ARISING FROM THE USE OF OUR PRODUCTS. SOME STATES DO NOT ALLOW THE EXCLUSION OR LIMITATION OF INCIDENTAL OR CONSEQUENTIAL DAMAGES, SO THE ABOVE LIMITATION OR EXCLUSION MAY NOT APPLY TO YOU.

JET sells through distributors only. The specifications listed in JET printed materials and on official JET website are given as general information and are not binding. JET reserves the right to effect at any time, without prior notice, those alterations to parts, fittings, and accessory equipment which they may deem necessary for any reason whatsoever. JET® branded products are not sold in Canada by JPW Industries, Inc.

Product Listing with Warranty Period

90 Days – Parts; Consumable items
1 Year – Motors; Machine Accessories
2 Year – Metalworking Machinery; Electric Hoists, Electric Hoist Accessories; Woodworking Machinery used for industrial or commercial purposes
5 Year – Woodworking Machinery
Limited Lifetime – JET Parallel clamps; VOLT Series Electric Hoists; Manual Hoists; Manual Hoist Accessories; Shop Tools; Warehouse & Dock products; Hand Tools; Air Tools

NOTE: JET is a division of JPW Industries, Inc. References in this document to JET also apply to JPW Industries, Inc., or any of its successors in interest to the JET brand.