



Operating Instructions and Parts Manual BRK-4T & 10T Hydraulic Body Repair Kits



JET
427 New Sanford Road
LaVergne, Tennessee 37086
Ph.: 800-274-6848
www.jettools.com

Part No. M-680014
Revision B1 05/2014
Copyright © 2014 JET

1.0 Warranty and Service

JET warrants every product it sells against manufacturers' defects. If one of our tools needs service or repair, please contact Technical Service by calling 1-800-274-6846, 8AM to 5PM CST, Monday through Friday.

Warranty Period

The general warranty lasts for the time period specified in the literature included with your product or on the official JET branded website.

- JET products carry a limited warranty which varies in duration based upon the product. (See chart below)
- Accessories carry a limited warranty of one year from the date of receipt.
- Consumable items are defined as expendable parts or accessories expected to become inoperable within a reasonable amount of use and are covered by a 90 day limited warranty against manufacturer's defects.

Who is Covered

This warranty covers only the initial purchaser of the product from the date of delivery.

What is Covered

This warranty covers any defects in workmanship or materials subject to the limitations stated below. This warranty does not cover failures due directly or indirectly to misuse, abuse, negligence or accidents, normal wear-and-tear, improper repair, alterations or lack of maintenance.

Warranty Limitations

Woodworking products with a Five Year Warranty that are used for commercial or industrial purposes default to a Two Year Warranty. Please contact Technical Service at 1-800-274-6846 for further clarification.

How to Get Technical Support

Please contact Technical Service by calling 1-800-274-6846. **Please note that you will be asked to provide proof of initial purchase when calling.** If a product requires further inspection, the Technical Service representative will explain and assist with any additional action needed. JET has Authorized Service Centers located throughout the United States. For the name of an Authorized Service Center in your area call 1-800-274-6846 or use the Service Center Locator on the JET website.

More Information

JET is constantly adding new products. For complete, up-to-date product information, check with your local distributor or visit the JET website.

How State Law Applies

This warranty gives you specific legal rights, subject to applicable state law.

Limitations on This Warranty

JET LIMITS ALL IMPLIED WARRANTIES TO THE PERIOD OF THE LIMITED WARRANTY FOR EACH PRODUCT. EXCEPT AS STATED HEREIN, ANY IMPLIED WARRANTIES OF MERCHANTABILITY AND FITNESS FOR A PARTICULAR PURPOSE ARE EXCLUDED. SOME STATES DO NOT ALLOW LIMITATIONS ON HOW LONG AN IMPLIED WARRANTY LASTS, SO THE ABOVE LIMITATION MAY NOT APPLY TO YOU.

JET SHALL IN NO EVENT BE LIABLE FOR DEATH, INJURIES TO PERSONS OR PROPERTY, OR FOR INCIDENTAL, CONTINGENT, SPECIAL, OR CONSEQUENTIAL DAMAGES ARISING FROM THE USE OF OUR PRODUCTS. SOME STATES DO NOT ALLOW THE EXCLUSION OR LIMITATION OF INCIDENTAL OR CONSEQUENTIAL DAMAGES, SO THE ABOVE LIMITATION OR EXCLUSION MAY NOT APPLY TO YOU.

JET sells through distributors only. The specifications listed in JET printed materials and on official JET website are given as general information and are not binding. JET reserves the right to effect at any time, without prior notice, those alterations to parts, fittings, and accessory equipment which they may deem necessary for any reason whatsoever. JET® branded products are not sold in Canada by JPW Industries, Inc.

Product Listing with Warranty Period

90 Days – Parts; Consumable items; Light-Duty Air Tools
1 Year – Motors; Machine Accessories; Heavy-Duty Air Tools; Pro-Duty Air Tools
2 Year – Metalworking Machinery; Electric Hoists, Electric Hoist Accessories; Woodworking Machinery used for industrial or commercial purposes
5 Year – Woodworking Machinery
Limited Lifetime – JET Parallel clamps; VOLT Series Electric Hoists; Manual Hoists; Manual Hoist Accessories; Shop Tools; Warehouse & Dock products; Hand Tools

NOTE: JET is a division of JPW Industries, Inc. References in this document to JET also apply to JPW Industries, Inc., or any of its successors in interest to the JET brand.

2.0 Table of contents

Section	Page
1.0 Warranty and Service.....	2
2.0 Table of contents.....	3
3.0 Safety warnings.....	4
4.0 Specifications.....	5
5.0 Features.....	5
6.0 Contents of shipping container.....	5
7.0 Before Operating.....	6
8.0 Fluid Maintenance.....	6
9.0 Operation.....	6
10.0 Storage.....	6
11.0 Troubleshooting BRK-4T/10T Repair Kits.....	7
12.0 Replacement Parts.....	7
12.1.1 BRK-4T and 10T Attachments – Exploded View.....	8
12.1.2 BRK-4T Attachments – Parts List.....	8
12.1.3 BRK-10A Attachments – Parts List.....	8
12.2.1 1/2-Ton Hydraulic Spreader Assembly – Exploded View.....	9
12.2.2 1/2-Ton Hydraulic Spreader Assembly – Parts List.....	9
12.3.1 BRK-4T Hydraulic Ram Assembly – Exploded View.....	10
12.3.2 BRK-4T Hydraulic Ram Assembly – Parts List.....	10
12.4.1 BRK-10T Hydraulic Ram Assembly – Exploded View.....	11
12.4.2 BRK-10T Hydraulic Ram Assembly – Parts List.....	11
12.5.1 BRK-4T Hydraulic Pump Assembly – Exploded View.....	12
12.5.2 BRK-4T Hydraulic Pump Assembly – Parts List.....	12
12.6.1 BRK-10T Hydraulic Pump Assembly – Exploded View.....	14
12.6.2 BRK-10T Hydraulic Pump Assembly – Parts List.....	14



3.0 Safety warnings

- **Read and understand the entire contents of this manual before attempting to use the body repair kit.**
 - **This body repair kit is designed and intended for use by properly trained and experienced personnel only. If you are not familiar with the proper and safe use of a body repair kit, do not use until proper training and knowledge has been obtained.**
 - **Failure to comply with all of these warnings may cause serious injury.**
1. Do not exceed the maximum load capacity of the ram.
 2. Use only on hard level surfaces capable of sustaining the load.
 3. Do not open oil filler screw unless ram is fully retracted and pressure is released.
 4. Do not use as a vehicle lifting device, or as a vehicle support.
 5. When extension tubes and/or offset attachments are used, the rated capacity is reduced by 50% for each tube or attachment connected.
 6. Make sure all attachments are fully engaged before applying load or pressure.
 7. If bowing or bending of ram or any attachment occurs during use, **STOP**, release pressure immediately and reconsider application. Application may not be compatible with product, a ram kit with a higher rated capacity may be required.
 8. Do not over extend the ram, as it is possible to force the plunger out of the top of the ram.
 9. When coupler valves are disconnected, insert dust cap to keep the oil lines clean.
 10. Monitor pressure and load at all times.
 11. Make sure the load is centrally applied to attachment or ram saddle. Do not load off center.
 12. Control the load. Dropping the load may cause the threads to shear and lose the load. Failure to comply may result in serious injury or death.
 13. Do not drop any heavy objects onto the hose, and do not allow the hose to kink.
 14. Allow clearance for the hose to avoid damage to the hose and couplers.
 15. Keep equipment away from heat or fire, as this may damage or weaken the equipment.
 16. Wear approved safety glasses/face shields while using this machine.
 17. Keep the floor around the body repair kit clean and free of scrap material, oil, and grease.
 18. Do not over reach. Maintain a balanced stance at all times.
 19. Use the right tool. Do not force a tool or attachment to do a job which it was not designed for.
 20. Replace warning labels if they become obscured or removed.
 21. Give your work undivided attention. Looking around, carrying on a conversation, and “horse-play” are careless acts that can result in serious injury.
 22. Keep visitors a safe distance from the work area.
 23. Use recommended accessories. Improper accessories may be hazardous.
 24. Some dust created by power sanding, sawing, grinding, drilling, and other construction activities contains chemicals known to cause cancer, birth defects or other reproductive harm. Some examples of these chemicals are:
 - Lead from lead based paint
 - Crystalline silica from bricks and cement and other masonry products, and
 - Arsenic and chromium from chemically-treated lumber.Your risk from those exposures varies, depending on how often you do this type of work. To reduce your exposure to these chemicals: work in a well ventilated area, and work with approved safety equipment, such as those dust masks that are specifically designed to filter out microscopic particles.
 25. Do not operate tool while under the influence of drugs, alcohol or any medication.

4.0 Specifications

	BRK-4T	BRK-10T
Model Number.....	BRK-4T	BRK-10T
Stock Number	680014	680110
Pump Capacity (ton)	4	10
Maximum Handle Effort (lbs).....	160	93
Oil Capacity (cu in).....	16.5	31.7
Pump Piston Diameter (in)	0.47	0.47
Piston Stroke (in).....	1	1.5
Overall Stroke (in)	4	6
Minimum & Maximum Height (in)	10.6/14.6	14.8/20.8
Maximum Cylinder Pressure (psi)	10,000	10,000
Net Weight (lbs)	38.5	66

5.0 Features

- Quick connect design allows assembly in seconds.
- Automatic safety overload system protects equipment.
- Heavy wall extension tubes for tough jobs.
- Proof tested and certified to meet ASME B30.1 standards.
- New two stage piston for quick action with BRK-10T.
- BRK-10T features wheels for transportation ease.

The specifications in this manual were current at time of publication, but because of our policy of continuous improvement, JET reserves the right to change specifications at any time and without prior notice, without incurring obligations.

6.0 Contents of shipping container

BRK-4T

- 1 Storage Case
- 1 17-1/4" Extension Tube
- 1 13-1/4" Extension Tube
- 1 9-1/4" Extension Tube
- 1 5-1/2" Extension Tube
- 1 Serrated Head
- 1 Spreading Wedge
- 1 Rubber Head
- 1 Flat Base
- 1 Ram Toe
- 1 Plunger Toe
- 1 Wedge Head
- 1 Combination Head
- 1 Male Connector
- 1 4 Ton Pump Assembly
- 1 4 Ton Ram Assembly
- 1 6' Hydraulic Hose w/Coupling
- 1 Owner's Manual
- 1 Warranty Card

BRK-10T

- 1 Storage Case with Wheels
- 1 20-1/2" Extension Tube
- 1 15-3/4" Extension Tube
- 1 11-3/4" Extension Tube
- 1 6-3/4" Extension Tube
- 1 Serrated Head
- 1 Spreading Wedge
- 1 Rubber Head
- 1 Flat Base
- 1 Ram Toe
- 1 Plunger Toe
- 1 Wedge Head
- 1 Combination Head
- 1 Male Connector
- 1 10 Ton Pump Assembly
- 1 10 Ton Ram Assembly
- 1 6' Hydraulic Hose w/Coupling
- 1 Owner's Manual
- 1 Warranty Card

7.0 Before Operating

1. Inspect the unit for evidence of fluid leaks, damaged hydraulic fittings, or other damage such as bent, broken, or missing parts. Fix or replace as needed before operating.
2. Check the fluid level.
3. Place the pump unit on a level surface. Use a flat blade screwdriver to remove the oil-fill screw and seal from the top of the pump cylinder (A, Figure 1).
4. If the fluid is below the metal rod inside the pump, add enough good-quality hydraulic fluid to just cover the rod. Do not overfill.
5. Replace the seal and tighten the screw.

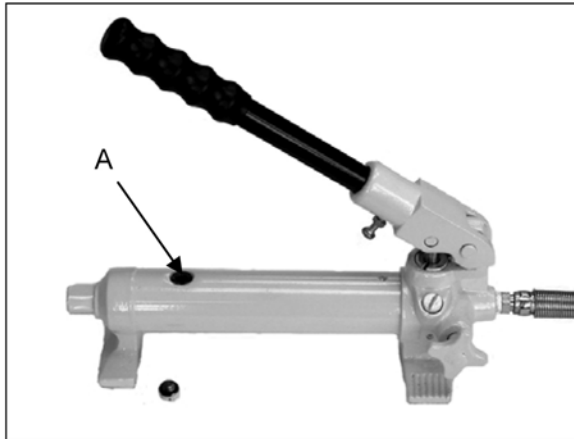


Figure 1

⚠ WARNING Use only good-quality hydraulic fluid. Improper fluid can cause premature failure of the jack, and the potential for sudden and immediate loss of load. Failure to comply may cause serious injury!

8.0 Fluid Maintenance

On a yearly basis, drain and refill the hydraulic fluid for optimum performance.

1. To drain, open the release valve. Remove the screw and seal. Invert the pump and drain the fluid in to a suitable container. Do not let dirt get into the system.
2. Refill with good-quality hydraulic fluid.

IMPORTANT! Dispose of hydraulic fluid in accordance with local regulations. Avoid mixing different types of fluid, and NEVER use brake fluid, transmission fluid, motor oil, or glycerin.

9.0 Operation

The pump can be used in a vertical or horizontal position. Always keep the hose end of the pump unit facing down when using in the vertical position.

1. Connect the hydraulic pump hose to the hydraulic ram. Tighten the connection firmly prior to pumping.
2. Close release valve (B, Figure 2) by turning it clockwise. Do not over tighten.

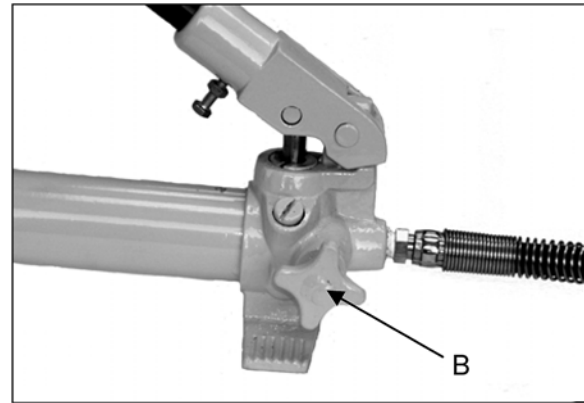


Figure 2

1. Pump the handle until the ram reaches the desired distance or pressure required.
2. Release the pressure by turning the release valve counter-clockwise.

10.0 Storage

1. Make sure the release valve on the pump unit is open and the ram is in the retracted position when not in use.
2. Keep parts and attachments in the case when not in use.

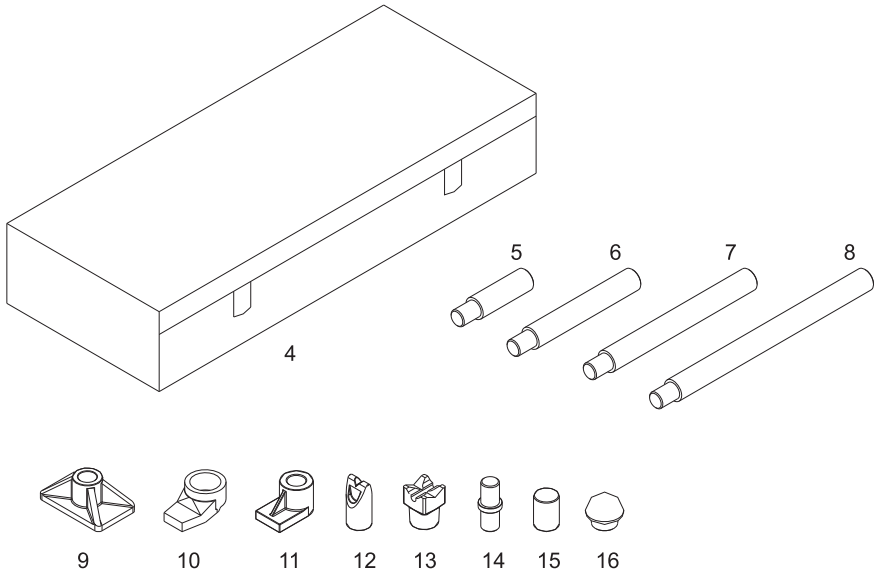
11.0 Troubleshooting BRK-4T/10T Repair Kits

Trouble	Probable Cause	Remedy
Pump unit will not work	<ol style="list-style-type: none"> 1. Release valve is open 2. Dirt on valve seats 3. Worn seals 	<ol style="list-style-type: none"> 1. Close the release valve 2. Clean valve seats 3. Replace seals
Pump unit will not produce pressure	<ol style="list-style-type: none"> 1. The reservoir could be overfilled or low on hydraulic fluid 2. Leak in the hose, seals, or connections 3. Air trapped in the system 	<ol style="list-style-type: none"> 1. Check the fluid level. Add or remove hydraulic fluid until the rod inside the reservoir is covered with fluid. Do not overfill. 2. Check the hose and replace if necessary. Make sure all connections are tight. Replace seals if needed. 3. Open the release valve. Pump the handle a couple of full strokes. Close the release valve.
Pump unit will not lower completely	<ol style="list-style-type: none"> 1. Air trapped in the system 2. The reservoir could be overfilled or low on hydraulic fluid 	<ol style="list-style-type: none"> 1. Open the release valve. Pump the handle a couple of full strokes. Close the release. 2. Add or remove hydraulic fluid to just cover the rod inside the reservoir with fluid. Do not overfill.
Ram will not fully extend	Low on hydraulic fluid	Add hydraulic fluid
Fluid leaking from release valve	Worn O-ring	Replace O-ring
Fluid leaking from hose	Damaged hose	Replace hose
Fluid leaking around hydraulic ram piston	Worn seal or piston	Replace seal or piston

12.0 Replacement Parts

Replacement parts are listed on the following pages. To order parts or reach our service department, call 1-800-274-6848 Monday through Friday, 8:00 a.m. to 5:00 p.m. CST. Having the Model Number and Serial Number of your machine available when you call will allow us to serve you quickly and accurately.

12.1.1 BRK-4T and 10T Attachments – Exploded View



12.1.2 BRK-4T Attachments – Parts List

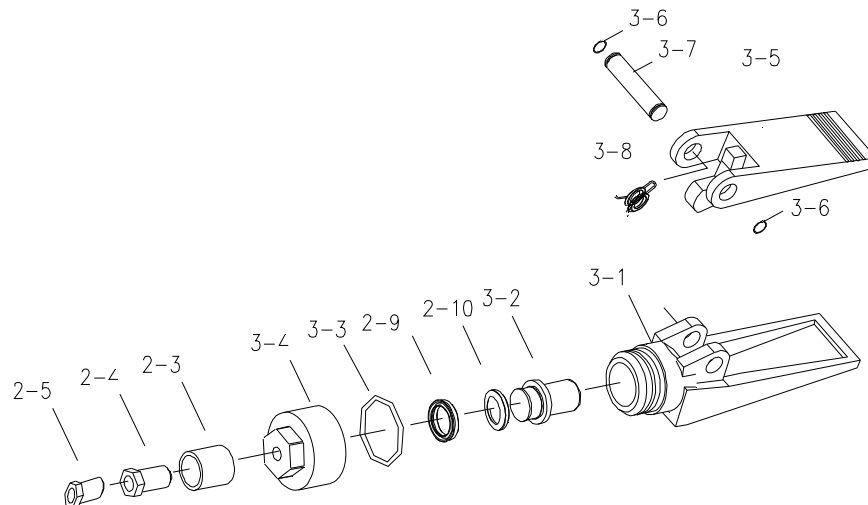
Index No.	Part No.	Description	Size	Qty.
4	BRK4T-4	Molded Case		1
5	BRK4T-5	Extension Tube A	5-1/2"	1
6	BRK4T-6	Extension Tube B	9-1/4"	1
7	BRK4T-7	Extension Tube C	13-1/4"	1
8	BRK4T-8	Extension Tube D	17-1/4"	1
9	BRK4T-9	Flat Base		1
10	BRK4T-10	Ram Toe		1
11	BRK4T-11	Plunger Toe		1
12	BRK4T-12	Wedge Head		1
13	BRK4T-13	Combination Head		1
14	BRK4T-14	Male Connector		1
15	BRK4T-15	Serrated Head	1-3/8"	1
16	BRK4T-16	Rubber Head	2-1/4"	1

12.1.3 BRK-10A Attachments – Parts List

4	BRK10T-4	Molded Case		1
5	BRK10T-5	Extension Tube A	6-3/4"	1
6	BRK10T-6	Extension Tube B	11-3/4"	1
7	BRK10T-7	Extension Tube C	15-3/4"	1
8	BRK10T-8	Extension Tube D	20-1/2"	1
9	BRK10T-9	Flat Base		1
10	BRK10T-10	Ram Toe		1
11	BRK10T-11	Plunger Toe		1
12	BRK10T-12	Wedge Head		1
13	BRK10T-13	Combination Head		1
14	BRK10T-14	Male Connector		1
15	BRK10T-15	Serrated Head	2"	1
16	BRK10T-16	Rubber Head	3"	1

12.2.1 1/2-Ton Hydraulic Spreader Assembly – Exploded View

BRK-4T and BRK-10T

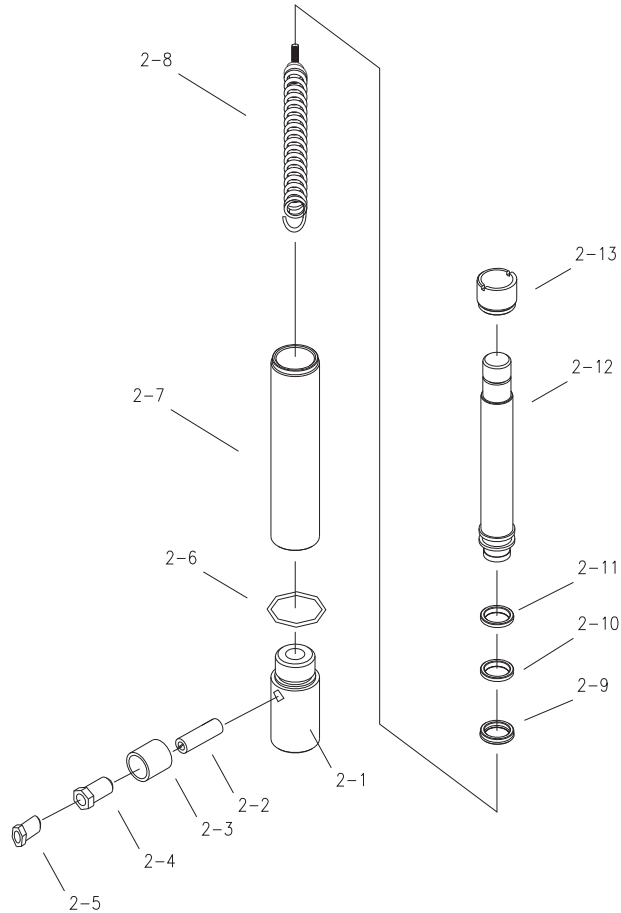


12.2.2 1/2-Ton Hydraulic Spreader Assembly – Parts List

BRK-4T and BRK-10T

Index No.	Part No.	Description	Size	Qty
2-5		Dustproof Plug		1
2-4	BRK4T-2-4	Coupler Set (Index #2-3, 2-4, 2-5)	1/4"	1
2-3		Coupling Ring		1
3-4	BRK4T-3-4	End Cap		1
3-3	BRK4T-3-3	O-Ring	32x3.55 mm	1
2-9	BRK4T-2-9	Seal	28x6 mm	1
2-10	BRK4T-2-10	Nylon Gasket		1
3-2	BRK4T-3-2	Piston		1
3-1	BRK4T-3-1	Lower Spreader		1
3-5	BRK4T-3-5	Upper Spreader		1
3-6	BRK4T-3-6	Snap Ring	12 mm	2
3-7	BRK4T-3-7	Pivot Pin		1
3-8	BRK4T-3-8	Torsion Spring		1
	RPK-BRKHSA	Repair Kit (Includes Index #3-3, 2-9, 2-10)		
	BRK-HAS	Complete Hydraulic Spreader Assembly		

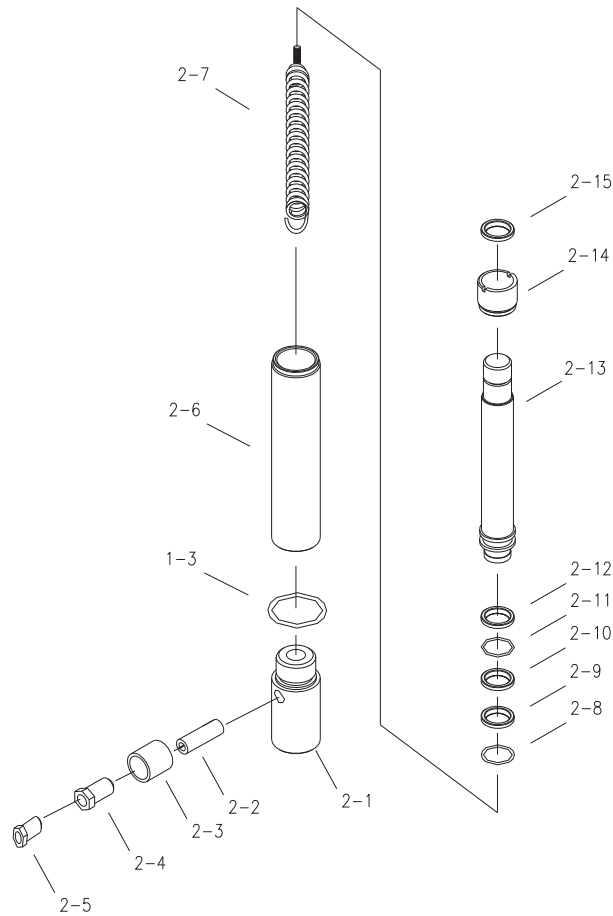
12.3.1 BRK-4T Hydraulic Ram Assembly – Exploded View



12.3.2 BRK-4T Hydraulic Ram Assembly – Parts List

Index No.	Part No.	Description	Size	Qty
2-1	BRK4T-2-1	Cylinder Base		1
2-2	BRK4T-2-2	Pin	8x20	1
2-3		Coupling Ring		1
2-4	BRK4T-2-4	Coupler Set (Index #2-3, 2-4, 2-5)	1/4"	1
2-5		Dustproof Plug		1
2-6	BRK4T-2-6	O-Ring	25x3.55 mm	1
2-7	BRK4T-2-7	Cylinder Tube		1
2-8	BRK4T-2-8	Spring		1
2-9	BRK4T-2-9	Seal	28x6 mm	1
2-10	BRK4T-2-10	Nylon Gasket		1
2-11	BRK4T-2-11	Piston Ring		1
2-12	BRK4T-2-12	Ram		1
2-13	BRK4T-2-13	Bushing		1
	RPK-BRK4THRA	Repair Kit (Includes Index #2-6, 2-9, 2-10)		
	BRK4T-HRA	Complete Hydraulic Ram Assembly		

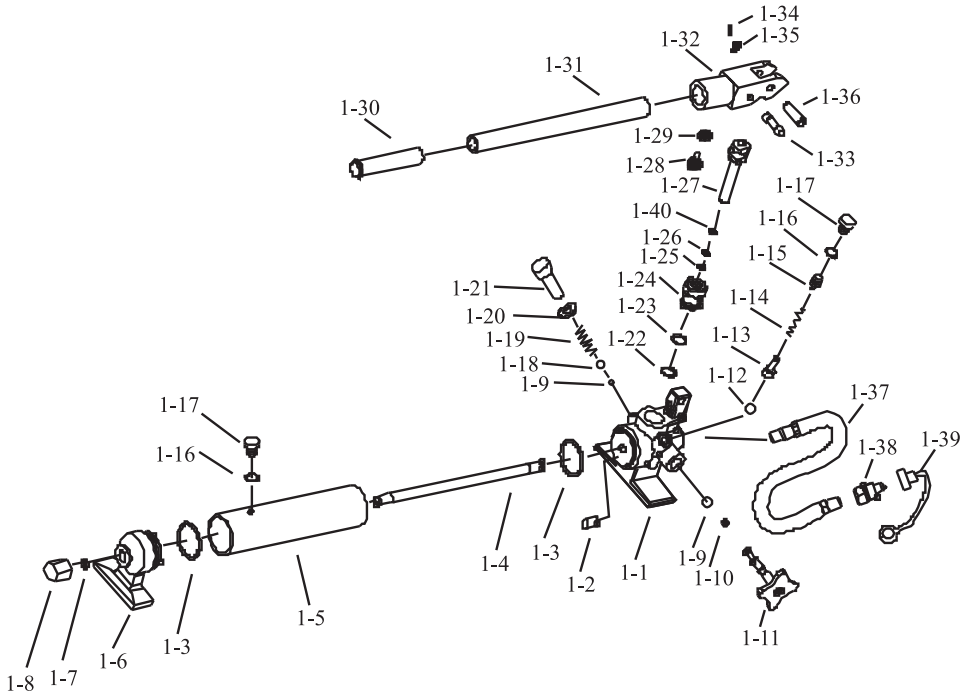
12.4.1 BRK-10T Hydraulic Ram Assembly – Exploded View



12.4.2 BRK-10T Hydraulic Ram Assembly – Parts List

Index No.	Part No.	Description	Size	Qty
1-3	BRK4T-1-3	O-Ring	40x3.55 mm	1
2-1	BRK10T-2-1	Cylinder Base		1
2-2	BRK10T-2-2	Pin	8x35 mm	1
2-3		Coupling Ring		1
2-4	BRK4T-2-4	Coupler Set (Index #2-3, 2-4, 2-5)	1/4"	1
2-5		Dustproof Plug		1
2-6	BRK10T-2-6	Cylinder Tube		1
2-7	BRK10T-2-7	Spring		1
2-8	BRK10T-2-8	Snap Ring	28 mm	1
2-9	BRK10T-2-9	Seal		1
2-10	BRK10T-2-10	Piston Ring		1
2-11	BRK10T-2-11	Seal	45x6 mm	1
2-12	BRK10T-2-12	Nylon Gasket	45x4 mm	1
2-13	BRK10T-2-13	Ram		1
2-14	BRK10T-2-14	Bushing		1
2-15	BRK10T-2-15	Bushing		1
	RPK-BRK10THRA	Repair Kit (Includes Index #1-3, 2-11, 2-12)		
	BRK10T-HRA	Complete Hydraulic Ram Assembly		

12.5.1 BRK-4T Hydraulic Pump Assembly – Exploded View

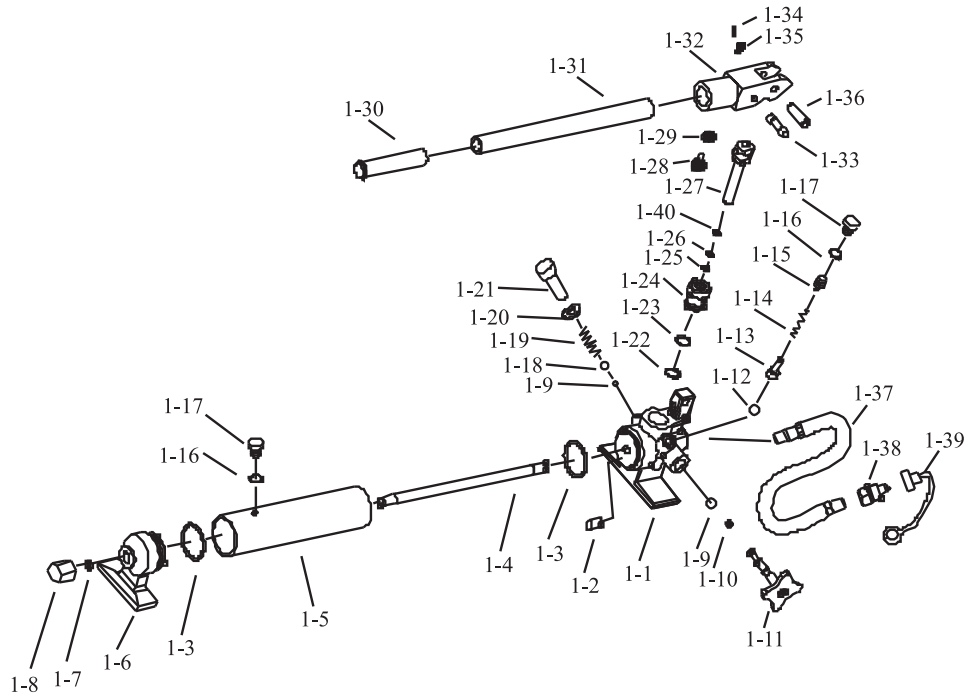


12.5.2 BRK-4T Hydraulic Pump Assembly – Parts List

Index No.	Part No.	Description	Size	Qty
1-1	BRK4T-1-1	Valve Block		1
1-2	BRK4T-1-2	Filter		1
1-3	BRK4T-1-3	O-Ring	40x3.55 mm	2
1-4	BRK4T-1-4	Rod Joint		1
1-5	BRK4T-1-5	Oil Reservoir		1
1-6	BRK4T-1-6	Supporting Block		1
1-7	BRK4T-1-7	O-Ring	14x2.65 mm	1
1-8	BRK4T-1-8	Hex Nut		1
1-9	BRK4T-1-9	Steel Ball	6 mm	2
1-10	BRK4T -1-10	O-Ring	7.1x2.65 mm	1
1-11	BRK4T -1-11	Release Valve Rod		1
1-12	BRK4T-1-12	Steel Ball	4 mm	1
1-13	BRK4T-1-13	Ball Seat		1
1-14	BRK4T-1-14	Safety Valve Spring		1
1-15	BRK4T-1-15	Adjust Screw		1
1-16	BRK4T-1-16	Seal		2
1-17	BRK4T-1-17	Bolt		2
1-18	BRK4T-1-18	Steel Ball	8 mm	1
1-19	BRK4T-1-19	Spring		1
1-20	BRK4T-1-20	Copper Washer		1
1-21	BRK4T-1-21	Bolt	10x16 mm	1
1-22	BRK4T-1-22	O-Ring	19x2.65 mm	1
1-23	BRK4T-1-23	Nylon Gasket	24x2 mm	1
1-24	BRK4T-1-24	Cylinder Pump		1
1-25	BRK4T-1-25	O-Ring	12x2.65 mm	1
1-26	BRK4T-1-26	Nylon Gasket	12x2 mm	1
1-27	BRK4T-1-27	Pump Plunger		1
1-28	BRK4T-1-28	Hex Bolt	6x25 mm	1

Index No.	Part No.	Description	Size	Qty
1-29	BRK4T-1-29	Nut	6 mm	1
1-30	BRK4T-1-30	Grip		1
1-31	BRK4T-1-31	Handle		1
1-32	BRK4T-1-32	Handle Socket		1
1-33	BRK4T-1-33	Pin		1
1-34	BRK4T-1-34	Clip		1
1-35	BRK4T-1-35	Flat Washer	10 mm	1
1-36	BRK4T-1-36	Pin		1
1-37	BRK4T-1-37	Hose		1
1-38	BRK4T-1-38	Coupler		1
1-39	BRK4T-1-39	Dustproof Plug		1
1-40	BRK4T-1-40	Seal	12x6 mm	1
	RPK-BRKHPA	Repair Kit (Includes Index #1-3, 1-7, 1-10, 1-16, 1-20, 1-22, 1-23, 1-25, 1-26, 1-40)		
	BRK4T-HPA	Complete Hydraulic Hand Pump Assembly		

12.6.1 BRK-10T Hydraulic Pump Assembly – Exploded View



12.6.2 BRK-10T Hydraulic Pump Assembly – Parts List

Index No.	Part No.	Description	Size	Qty
1-1	BRK4T-1-1	Valve Block		1
1-2	BRK4T-1-2	Filter		1
1-3	BRK4T-1-3	O-Ring	40x3.55 mm	2
1-4	BRK10T-1-4	Rod Joint		1
1-5	BRK10T-1-5	Oil Reservoir		1
1-6	BRK4T-1-6	Supporting Block		1
1-7	BRK4T-1-7	O-Ring	14x2.65 mm	1
1-8	BRK4T-1-8	Hex Nut		1
1-9	BRK4T-1-9	Steel Ball	6 mm	2
1-10	BRK4T-1-10	O-Ring	7.1x2.65 mm	1
1-11	BRK4T-1-11	Release Valve Rod		1
1-12	BRK4T-1-12	Steel Ball	4 mm	1
1-13	BRK4T-1-13	Ball Seat		1
1-14	BRK4T-1-14	Safety Valve Spring		1
1-15	BRK4T-1-15	Adjust Screw		1
1-16	BRK4T-1-16	Seal		2
1-17	BRK4T-1-17	Bolt		2
1-18	BRK4T-1-18	Steel Ball	8 mm	1
1-19	BRK4T-1-19	Spring		1
1-20	BRK4T-1-20	Copper Washer		1
1-21	BRK4T-1-21	Bolt	10x16mm	1
1-22	BRK4T-1-22	O-Ring	19x2.65 mm	1
1-23	BRK4T-1-23	Nylon Gasket	24x2 mm	1
1-24	BRK4T-1-24	Cylinder Pump		1
1-25	BRK4T-1-25	O-Ring	12x2.65 mm	1
1-26	BRK4T-1-26	Nylon Gasket	12x2 mm	1
1-27	BRK4T-1-27	Pump Plunger		1
1-28	BRK4T-1-28	Hex Bolt	6x25 mm	1
1-29	BRK4T-1-29	Nut	6 mm	1

Index No.	Part No.	Description	Size	Qty
1-30	BRK4T-1-30	Grip		1
1-31	BRK10T-1-31	Handle		1
1-32	BRK4T-1-32	Handle Socket		1
1-33	BRK4T-1-33	Pin		1
1-34	BRK4T-1-34	Clip		1
1-35	BRK4T-1-35	Flat Washer	10 mm	1
1-36	BRK4T-1-36	Pin		1
1-37	BRK4T-1-37	Hose		1
1-38	BRK4T-1-38	Coupler		1
1-39	BRK4T-1-39	Dustproof Plug		1
1-40	BRK4T-1-40	Seal	12x6 mm	1
	RPK-BRKHPA	Repair Kit (Includes Index #1-3, 1-7, 1-10, 1-16, 1-20, 1-22, 1-23, 1-25, 1-26, 1-40)		
	BRK10T-HPA	Complete Hydraulic Hand Pump Assembly		



427 New Sanford Road
LaVergne, Tennessee 37086
Phone: 800-274-6848
www.jettools.com