



# Operating Instructions and Parts Manual Pneumatic Sand Rammer (Floor Model)

Model JET-06



**JET**  
427 New Sanford Road  
LaVergne, Tennessee 37086  
Ph.: 800-274-6848  
[www.jettools.com](http://www.jettools.com)

**Part No. M-556606**  
Revision G1 07/2014  
Copyright © 2014 JET

# Warranty and Service

JET® warrants every product it sells against manufacturers' defects. If one of our tools needs service or repair, please contact Technical Service by calling 1-800-274-6846, 8AM to 5PM CST, Monday through Friday.

## Warranty Period

The general warranty lasts for the time period specified in the literature included with your product or on the official JET branded website.

- JET products carry a limited warranty which varies in duration based upon the product. (See chart below)
- Accessories carry a limited warranty of one year from the date of receipt.
- Consumable items are defined as expendable parts or accessories expected to become inoperable within a reasonable amount of use and are covered by a 90 day limited warranty against manufacturer's defects.

## Who is Covered

This warranty covers only the initial purchaser of the product from the date of delivery.

## What is Covered

This warranty covers any defects in workmanship or materials subject to the limitations stated below. This warranty does not cover failures due directly or indirectly to misuse, abuse, negligence or accidents, normal wear-and-tear, improper repair, alterations or lack of maintenance.

## Warranty Limitations

Woodworking products with a Five Year Warranty that are used for commercial or industrial purposes default to a Two Year Warranty. Please contact Technical Service at 1-800-274-6846 for further clarification.

## How to Get Technical Support

Please contact Technical Service by calling 1-800-274-6846. **Please note that you will be asked to provide proof of initial purchase when calling.** If a product requires further inspection, the Technical Service representative will explain and assist with any additional action needed. JET has Authorized Service Centers located throughout the United States. For the name of an Authorized Service Center in your area call 1-800-274-6846 or use the Service Center Locator on the JET website.

## More Information

JET is constantly adding new products. For complete, up-to-date product information, check with your local distributor or visit the JET website.

## How State Law Applies

This warranty gives you specific legal rights, subject to applicable state law.

## Limitations on This Warranty

JET LIMITS ALL IMPLIED WARRANTIES TO THE PERIOD OF THE LIMITED WARRANTY FOR EACH PRODUCT. EXCEPT AS STATED HEREIN, ANY IMPLIED WARRANTIES OF MERCHANTABILITY AND FITNESS FOR A PARTICULAR PURPOSE ARE EXCLUDED. SOME STATES DO NOT ALLOW LIMITATIONS ON HOW LONG AN IMPLIED WARRANTY LASTS, SO THE ABOVE LIMITATION MAY NOT APPLY TO YOU.

JET SHALL IN NO EVENT BE LIABLE FOR DEATH, INJURIES TO PERSONS OR PROPERTY, OR FOR INCIDENTAL, CONTINGENT, SPECIAL, OR CONSEQUENTIAL DAMAGES ARISING FROM THE USE OF OUR PRODUCTS. SOME STATES DO NOT ALLOW THE EXCLUSION OR LIMITATION OF INCIDENTAL OR CONSEQUENTIAL DAMAGES, SO THE ABOVE LIMITATION OR EXCLUSION MAY NOT APPLY TO YOU.

JET sells through distributors only. The specifications listed in JET printed materials and on official JET website are given as general information and are not binding. JET reserves the right to effect at any time, without prior notice, those alterations to parts, fittings, and accessory equipment which they may deem necessary for any reason whatsoever. JET® branded products are not sold in Canada by JPW Industries, Inc.

## Product Listing with Warranty Period

90 Days – Parts; Consumable items; Light-Duty Air Tools
1 Year – Motors; Machine Accessories; Heavy-Duty Air Tools; Pro-Duty Air Tools
2 Year – Metalworking Machinery; Electric Hoists, Electric Hoist Accessories
5 Year – Woodworking Machinery
Limited Lifetime – JET Parallel clamps; VOLT Series Electric Hoists; Manual Hoists; Manual Hoist Accessories; Shop Tools; Warehouse & Dock products; Hand Tools

NOTE: JET is a division of JPW Industries, Inc. References in this document to JET also apply to JPW Industries, Inc., or any of its successors in interest to the JET brand.



## Safety warnings

1. Read and understand entire owner's manual before attempting assembly or operation.
2. Read and understand the warnings posted on the tool and in this manual. Failure to comply with all of these warnings may cause serious injury.
3. Replace warning labels if they become obscured or removed.
4. This sand rammer is designed and intended for use by properly trained and experienced personnel only. If you are not familiar with the proper and safe operation of a sand rammer, do not use until proper training and knowledge have been obtained.
5. Do not use this sand rammer for other than its intended use. If used for other purposes, JET, disclaims any real or implied warranty and holds itself harmless from any injury that may result from that use.
6. Always wear approved eye protection while using this sand rammer, such as face shield or safety glasses with side shields.
7. Wear ear protectors (plugs or muffs) during operation.
8. Wear work gloves.
9. Some dust created by power sanding, sawing, grinding, drilling and other construction activities contains chemicals known to cause cancer, birth defects or other reproductive harm. Some examples of these chemicals are:
  - Lead from lead based paint.
  - Crystalline silica from bricks, cement and other masonry products.
  - Arsenic and chromium from chemically treated lumber.

Your risk of exposure varies, depending on how often you do this type of work. To reduce your exposure to these chemicals, work in a well-ventilated area and work with approved safety equipment, such as face or dust masks that are specifically designed to filter out microscopic particles.
10. Do not operate this tool while tired or under the influence of drugs, alcohol or medication.
11. Never change the butt on this tool, or perform any cleaning, inspection or maintenance, while it is connected to air supply. Turn off air

supply, bleed excess air by turning tool on and off, then disconnect air hose.

12. Make sure butt is properly mounted with screw tightened before operating. Do not point butt end of tool toward yourself or others.
13. Do not allow unauthorized persons in work area.
14. Give your work undivided attention. Looking around, carrying on a conversation and "horse-play" are careless acts that can result in serious injury.
15. Use recommended parts and accessories; improper parts and accessories may be hazardous. Replace worn parts in a timely manner.
16. Do not modify this sand rammer.
17. Always be aware of your environment. Make sure work area is free of obstacles. Do not operate this sand rammer in explosive environments, or near flammable materials. Do not operate near electrical cables.
18. Keep your feet away from the butt.
19. Keep hands away from starting lever until you are ready to operate tool.
20. Avoid using tool in horizontal position.
21. Normal operation of this sand rammer may expose operator to high levels of vibration. This can be mitigated somewhat by the following means:
  - Grip tool firmly enough to safely control it, but do not over-grip or exert unnecessary force – allow tool to do its job.
  - Maintain a comfortable stance, yet firmly balanced with feet shoulder-width apart.
  - Change posture slightly and/or switch hand positions during extended work.
  - Do not exert pressure from other parts of your body on the tool; only your hands should contact it during operation.
  - Avoid placing your hands against ridges or protuberances on the tool that can constantly rub or strike your hands. Wear padded gloves.
  - Use recommended air pressure; higher or lower pressure may result in increased vibration.
  - Avoid contacting solid materials with the butt, such as concrete or granite.

- Use common sense: Avoid prolonged use of the sand rammer, and take breaks when needed, especially if symptoms of fatigue, numbness or excessive discomfort appear. If symptoms persist, you may wish to consult a health professional.

22. If sand rammer begins vibrating more than usual, stop immediately and investigate the cause. If repairs or maintenance are needed, do not operate the tool until these have been completed.

## About this manual

This manual is provided by JET covering the safe operation and maintenance procedures for a JET-06 model Sand Rammer. This manual contains instructions on assembly, safety precautions, general operating procedures, maintenance instructions and parts breakdown. Your tool has been designed and constructed to provide years of trouble-free operation if used in accordance with the instructions as set forth in this document.

If there are questions or comments, please contact your local supplier or JET. JET can also be reached at our web site: [www.jettools.com](http://www.jettools.com).

Retain this manual for future reference. If the tool transfers ownership, the manual should accompany it.

** WARNING** Read and understand the entire contents of this manual before attempting assembly or operation! Failure to comply may cause serious injury!

## Specifications

Stock number .....	556606
Model number .....	JET-06
Type .....	floor
Butt diameter .....	5-3/4 in.
Bore diameter .....	1-1/2 in.
Stroke .....	5-1/2 in.
Vibration value* .....	47 m/s <sup>2</sup>
Overall length .....	49 in.
Shipping weight .....	37 in.

\* determined according to ISO28927.

The specifications in this manual were current at time of publication, but because of our policy of continuous improvement, JET, reserves the right to change specifications at any time and without prior notice, without incurring obligations.

# Assembly

Refer to Figure 1.

Make sure mating surfaces are clean before assembling.

1. Install handle assembly by screwing pipe (A) into cylinder (B). Tighten lock nut (C) to secure.
2. Assemble butt (D) and secure with screw (E; #34 in parts breakdown).
3. Make sure air supply line is clear of any water or dirt. Connect air supply to threaded inlet on top of handle (F). NOTE: Quick-connect couplings are not recommended for this tool. Use shock-resistant threaded fittings instead.

# Operation

**⚠WARNING** Read and understand all safety warnings on pages 3-4 before operating this sand rammer.

Use an in-line oiler when possible. Otherwise, lubricate with air tool oil into the air inlet after 2 to 3 hours of operation.

Before each day's use, remove oil plug at top of cylinder cap (G, Figure 1) and fill reservoir with air tool oil.

1. Assume a balanced position with your feet clear of the butt.
2. Position hands as shown in Figure 1, with palm against on/off lever, and other hand on pipe.
3. Slightly press butt of sand rammer against working surface.
4. Press lever in toward handle to start tool. Release lever to stop. The catch atop the handle can be flipped down to keep the lever in on position.

# Maintenance

When removing a butt, remove screw and pull butt off piston. If needed, carefully use a dead-blow hammer to knock butt from piston.

Periodically check tightness of the packing by pushing piston rod in and out by hand. There should be slight drag in the piston's movement.

After operation, clean the tool and flush it with a solvent, then relubricate with air tool oil.

Store tool in a dry location. Before storing, pour air tool oil into the air inlet, connect to air supply and run it for a few seconds to distribute the oil.

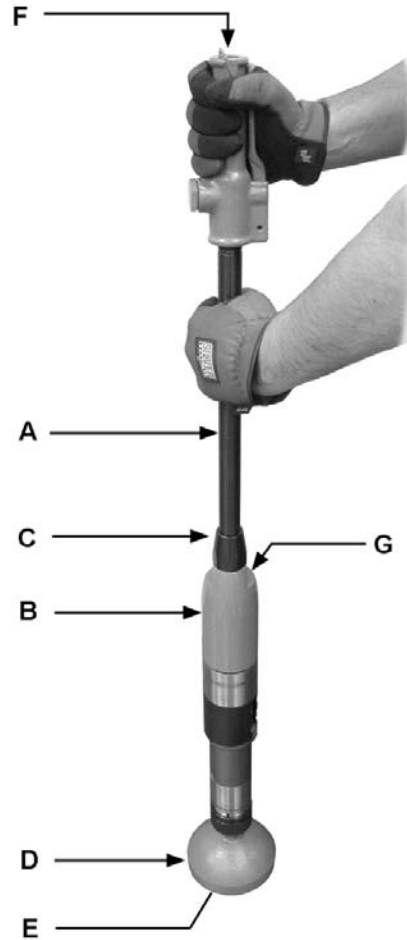
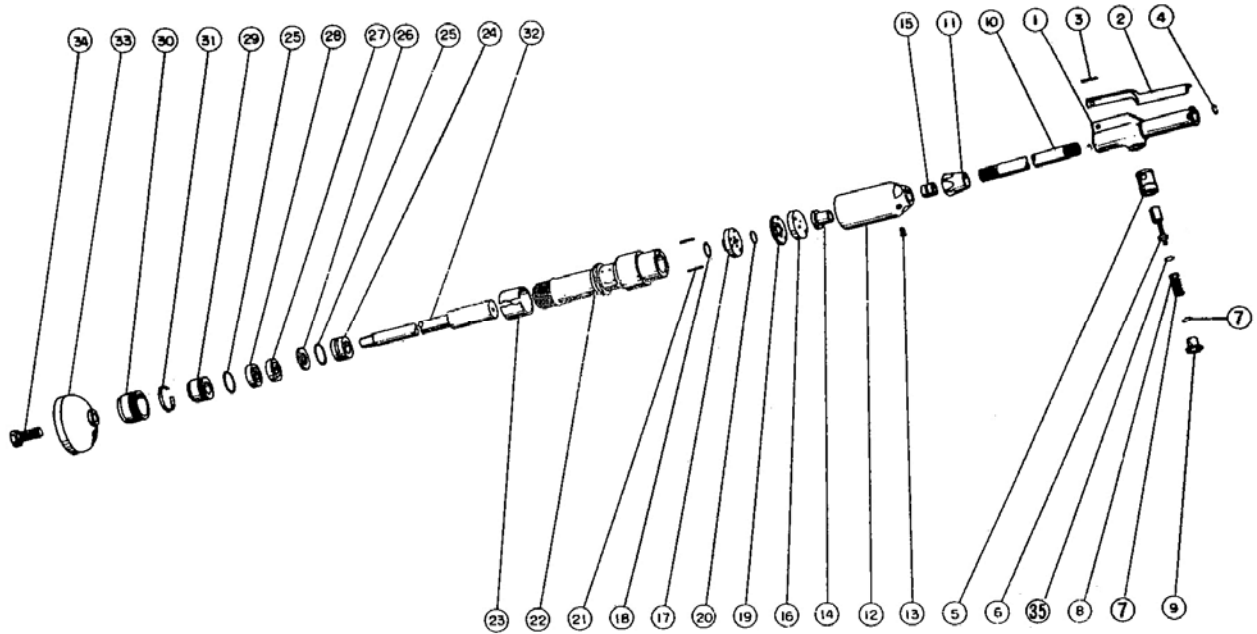


Figure 1

## Replacement Parts – JET-06 Sand Rammer

To order parts or reach our service department, call 1-800-274-6848 Monday through Friday (see our website for business hours, [www.jettools.com](http://www.jettools.com)). Having the Model Number and Serial Number of your tool available when you call will allow us to serve you quickly and accurately.



Index	Part No.	Description	Qty.
1	JET06-01	Handle	1
	JET06-01A	Handle Assy Complete	1
2	JET06-02	Handle Lever	1
3	JET06-03	Handle Lever Pin, 6x22	1
4	JET06-04	Handle Lever Ring	1
5	JET06-05	Throttle Valve Bushing	1
6	JET06-06	Throttle Valve	1
7	JET06-07	O-Ring, P22	1
8	JET06-08	Throttle Valve Spring	1
9	JET06-09	Throttle Valve Spring Plug	1
10	JET06-10	Connecting Pipe, NPT 3/4	1
11	JET06-11	Connecting Pipe Lock Nut	1
12	JET06-12	Cylinder Cap, NPT 3/4	1
13	JET06-13	Oil Plug, GDL NPTF 1/4	1
14	JET06-14	Cylinder Cap Bushing	1
15	JET06-15	Valve Housing Bushing	1
16	JET06-16	Upper Valve Plate	1
17	JET06-17	Lower Valve Block	1

Index	Part No.	Description	Qty.
18	JET06-18	O-Ring, P32	1
19	JET06-19	Center Valve Plate	1
20	JET06-20	Automatic Valve	1
21	JET06-21	Valve Knock Pin	1
22	JET06-22	Cylinder	1
23	JET06-23	Exhaust Deflector	1
24	JET06-24	Upper Guide Bushing	1
25	JET06-25	O-Ring, P35	1
26	JET06-26	Packing, Upper	1
27	JET06-27	Packing, Middle	1
28	JET06-28	Packing, Lower	1
29	JET06-29	Lower Guide Bushing	1
30	JET06-30	Packing Nut	1
31	JET06-31	Lock Ring, Stuffing Box	1
32	JET06-32	Piston	1
33	556630	Butt (Hollow Steel)	1
34	JET06-34	Clamp Screw	1
35	JET06-35	O-Ring, P10	1





427 New Sanford Road  
LaVergne, Tennessee 37086  
Phone: 800-274-6848  
[www.jettools.com](http://www.jettools.com)